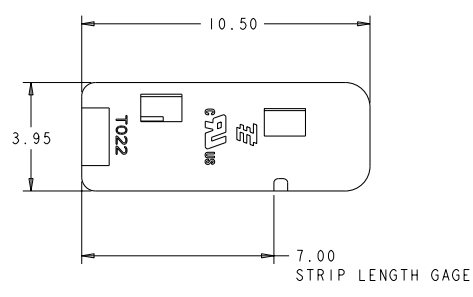
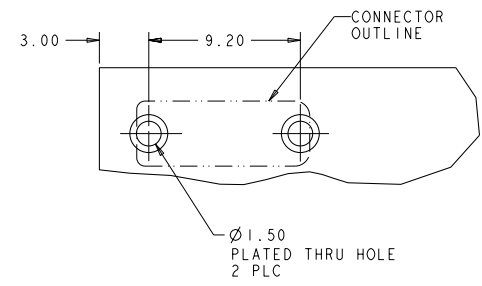
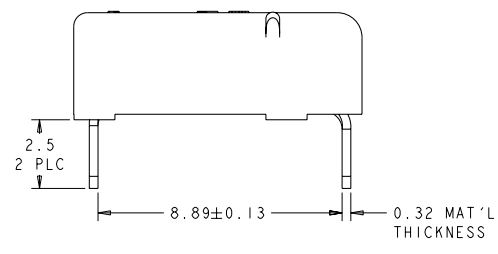
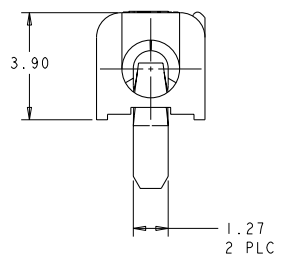


REV	DATE	BY	APP'D
A	29MAR2009	MMR	DD



- △ MATERIALS AND FINISH:
 - HOUSING: LCP, COLOR: WHITE
 - CONTACTS: COPPER ALLOY, FINISH: TIN
- 2. MUST COMPLY WITH DIRECTIVE 2002/95/EC (ROHS)
- 4. WIRE TYPES AND SIZES ACCEPTED
 - 18, 20 AND 22 AWG SOLID WIRE
 - 18 AND 20 AWG PREBOND STRANDED WIRE
 - 18 AWG STRANDED WIRE (16 STRAND COUNT)
 - MAX INSULATION OD: 2.10 MM (.083")
 - STRIP LENGTH: 7.0±1.0 (.276")
- 5. PACKAGED IN TAPE AND REEL
- △ MATERIALS AND FINISH:
 - HOUSING: LCP, COLOR: BLACK
 - CONTACTS: COPPER ALLOY, FINISH: TIN



RECOMMENDED PCB LAYOUT
 SCALE 6:1

△	BLACK	2008839-2
△	WHITE	2008839-1
MATERIAL	COLOR	PART NUMBER

DIMENSIONS:		TOLERANCES UNLESS OTHERWISE SPECIFIED:		DRAWN BY: GURURAJ S.		DATE: 17OCT2007	
mm		0 PLC	±.1	APP'D		Tyco Electronics Harrisburg, PA 17105-3608	
		1 PLC	±0.2	PRODUCT SPEC			
		2 PLC	±0.13	APPLICATION SPEC			
		3 PLC	±.1	WEIGHT			
		4 PLC	±.1	CUSTOMER DRAWING			
		ANGLES	±.3				
		FINISH					
MATERIAL	SEE TABLE	FINISH	SEE TABLE	SCALE	1:1	SHEET	1 OF 2

4

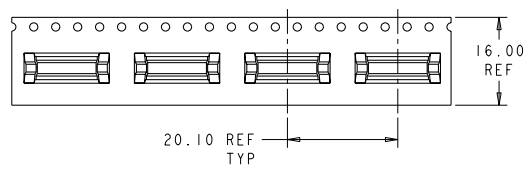
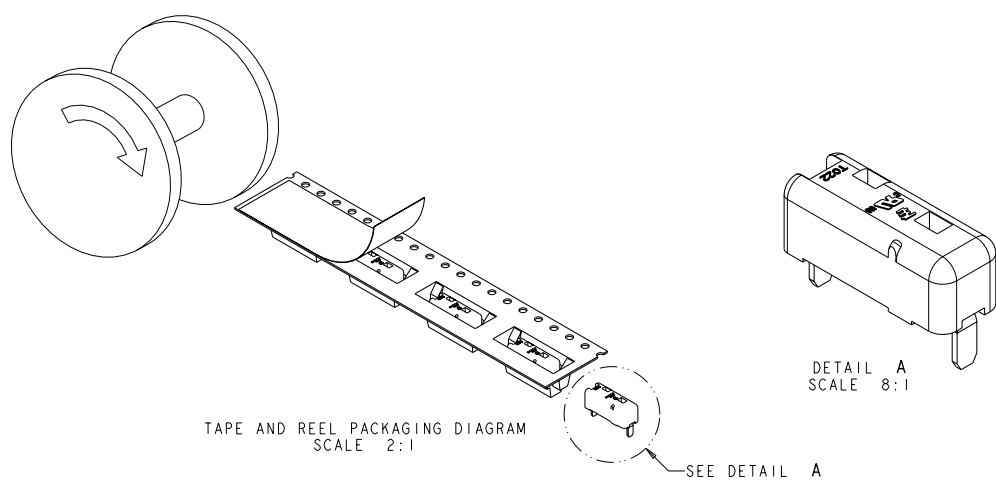
3

2

1

THIS DRAWING IS UNPUBLISHED. RELEASED FOR PUBLICATION BY TYCO ELECTRONICS CORPORATION. ALL RIGHTS RESERVED. COPYRIGHT 20

LOC	DIST	REVISIONS			
P	LYR	DESCRIPTION	DATE	BY	APPR
-	-	SEE SHEET 1	-	-	-



<small>TOP DRAWING IS CONTROL DRAWING FOR THE CUSTOMER'S INFORMATION. THIS DRAWING IS UNPUBLISHED. RELEASED FOR PUBLICATION BY TYCO ELECTRONICS CORPORATION. ALL RIGHTS RESERVED. COPYRIGHT 20</small>		DWG GURURAJ S.	17OCT2007 CEN		Tyco Electronics Harrisburg, PA 17105-3608
DIMENSIONS: mm	TO DIMENSIONS UNLESS OTHERWISE SPECIFIED:	APVD PRODUCT SPEC	NAME	SIZE	CASE CODE
	0 PLC ±0 1 PLC ±0.2 2 PLC ±0.13 3 PLC ±0.1 4 PLC ±0.1 ANGLES ±0.3	APPLICATION SPEC	DRAWING NO A200779	DRAWING NO C-2008839	RESTRICTED TO
MATERIAL SEE TABLE	FINISH SEE TABLE	WEIGHT CUSTOMER DRAWING	SCALE 1:1	SHEET 2 OF 2	REV A