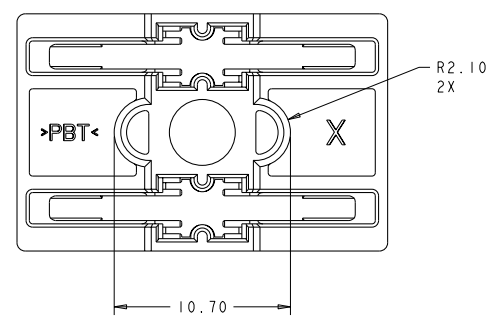
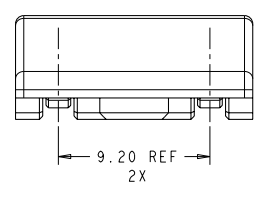
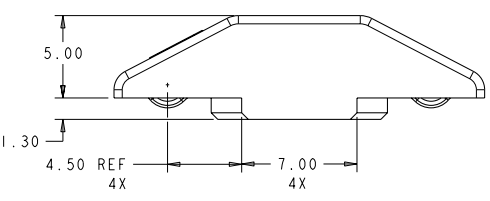
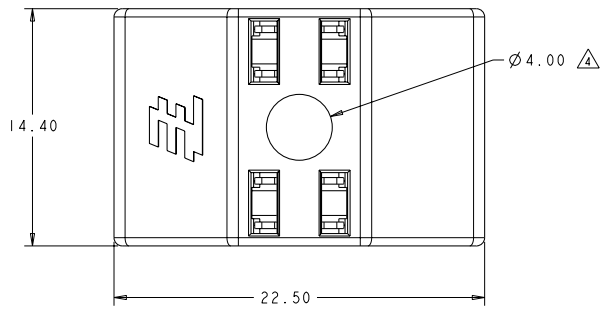
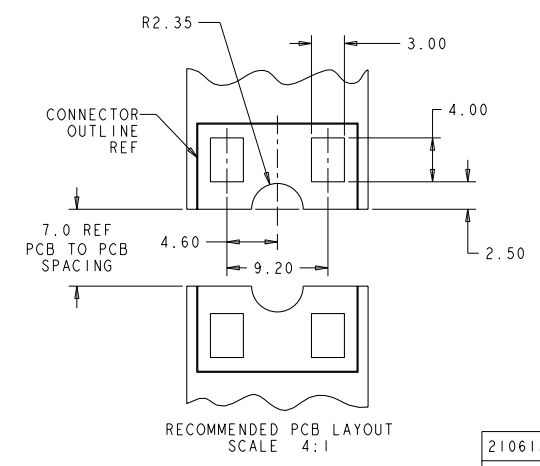


REVOLUTIONS		DATE	BY	APPROV
P	LYA			
A2	REVISED PER ECO-11-004820	11MAR2011	RK	HMR



- NOTES:
- 1. MATERIALS AND FINISH:
    - HOUSING: PBT, COLOR: NATURAL
    - CONTACTS: COPPER ALLOY, FINISH: PRE-TIN
  - 2. MUST COMPLY WITH DIRECTIVE 2002/95/EC (ROHS)
  - 3. THIS PRODUCT HAS NOT COMPLETED VALIDATION TESTING
  - 4. RECOMMENDED SCREW SIZE: #6  
SCREW DOWN TORQUE: 0.11-.22 N-M [1.0-2.0 LBF-IN]
  - 5. SCREWS FROM FERROUS METALS (OTHER THAN STAINLESS STEEL) SHOULD BE ZINC PLATED OR HAVE AN EQUIVALENT PROTECTIVE COATING
  - 6. PACKAGING: TUBE PACKAGING



2106154-1  
PART NO.

THIS DRAWING IS A CONTROLLED DOCUMENT.		DATE: 04FEB2009	TE Connectivity
DRAWN BY: C. DAILY		DATE: 04FEB2009	
CHECKED BY: R. NARANG		DATE: 04FEB2009	JUMPER, BOARD TO BOARD, SCREW DOWN
APPROVED BY:		DATE:	
DIMENSIONS: mm		PRODUCT SPEC: 108-2392	SHEET: A2 CASE CODE: C-2106154 DRAWING NO: 114-13260
TO MANUFACTURER'S SPECIFICATIONS: 0 PLC: 2X 1 PLC: 2X 2 PLC: 2X 3 PLC: 2X 4 PLC: 2X ANGLES: 45°		APPLICATION SPEC: 114-13260	
MATERIAL: PBT	FINISH: PRE-TIN	WEIGHT: -	RESTRICTED TO: -
CUSTOMER DRAWING		SCALE: 6:1	SHEET 1 OF 1 REV A2