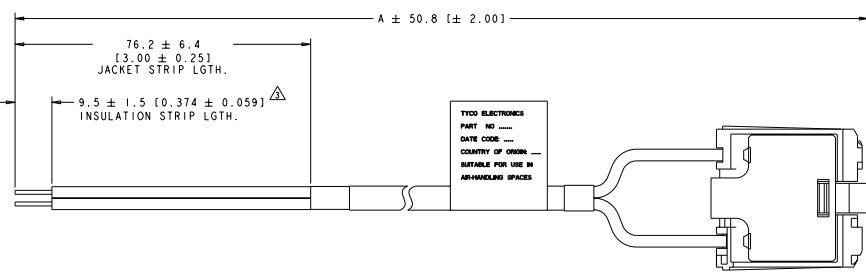
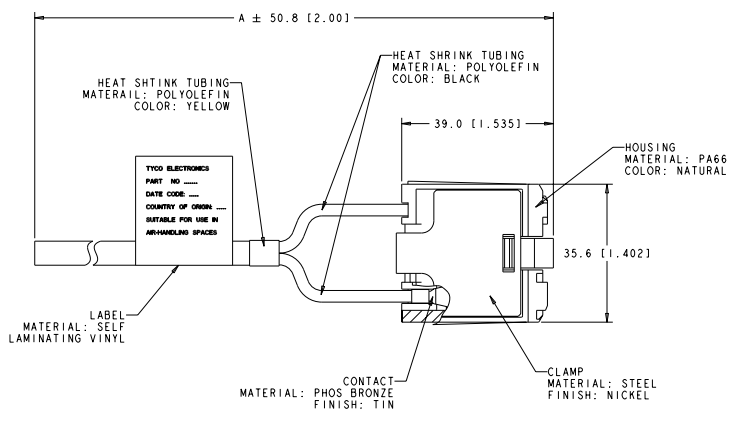


REV		REVISIONS			
NO	DATE	DESCRIPTION	BY	CHK	APP
CM	00	A PER ECO-11-019559			



CABLE ASSEMBLY (PREPARED END)
 (P/N'S: 2106718-3 & -4)

1. DIRECTIVE 2002/95/EC (ROHS) COMPLIANT.
 2. CABLE MATERIAL: 18AWG CMP, CL2P, PLENUM RATED, COLOR: NATURAL.
- ⚠ STRIPPED WIRE ENDS TO BE TINNED.



CABLE ASSEMBLY (BLANK END)
 (P/N'S: 2106718-1 & -2)

PREPARED END	3048.0mm/120.0"	2106718-4
PREPARED END	1524.0mm/60.0"	2106718-3
BLANK END	3048.0mm/120.0"	2106718-2
BLANK END	1524.0mm/60.0"	2106718-1
DESCRIPTION	DIM A (CABLE LENGTH)	PART NO

THIS DRAWING IS A CONTROLLED DOCUMENT. **DOC12009**

DATE: 2016-02-26
 BY: 26382201
 CHECKED: 26382201
 APPROVED: 26382201

STE TE Connectivity

ASSEMBLY, CABLE, DEVICE-OUT WHIP

STATE: CA CASE CODE: 2106718
 REVISION: A 00779 ©=2106718

CUSTOMER DRAWING