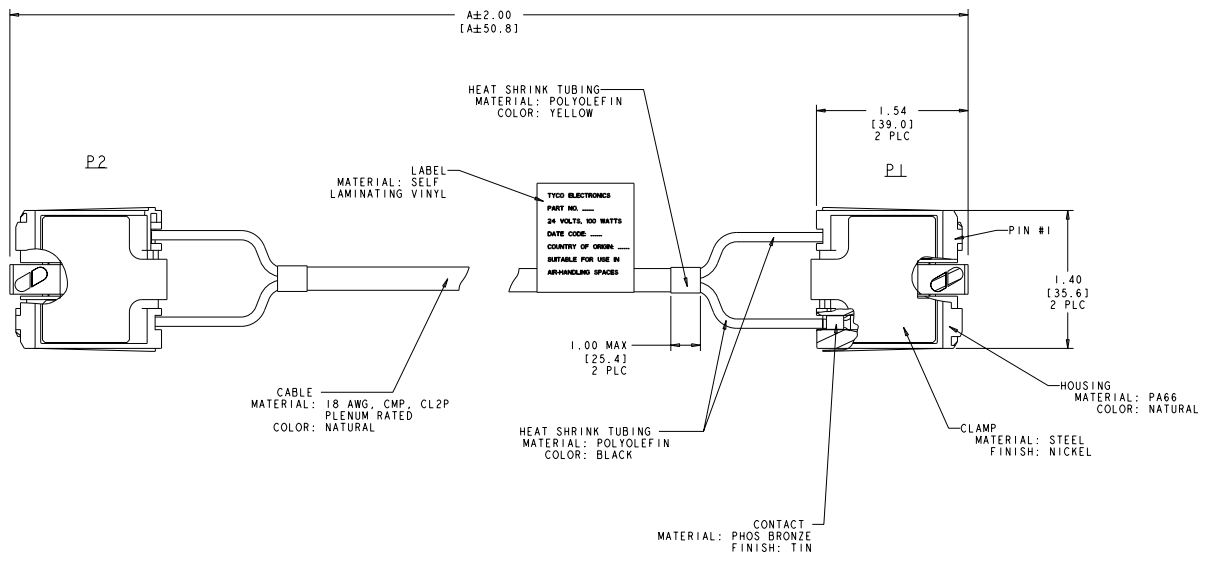


REV	DATE	DESCRIPTION	BY	CHK	APP
A	SEE ECO-11-019559				

P1	P2
PIN #1	PIN #2
PIN #2	PIN #1

1. DIRECTIVE 2002/95/EC (ROHS) COMPLIANT.
 ⚠ PART NUMBER 2106728-2 TO REMAIN AS PRELIMINARY STATUS.



1828.8	2106728-2
914.4	2106728-1
DIM A (CABLE LENGTH)	PART NO

THIS DRAWING IS A CONTROLLED DOCUMENT.		REV. 001	00012009
DATE	BY	DATE	BY
188-2418	283EP2011		
188-2418			
116-13215			
00779	2106728		
CUSTOMER DRAWING			

STE TE Connectivity
 ASSEMBLY, CABLE JUMPER