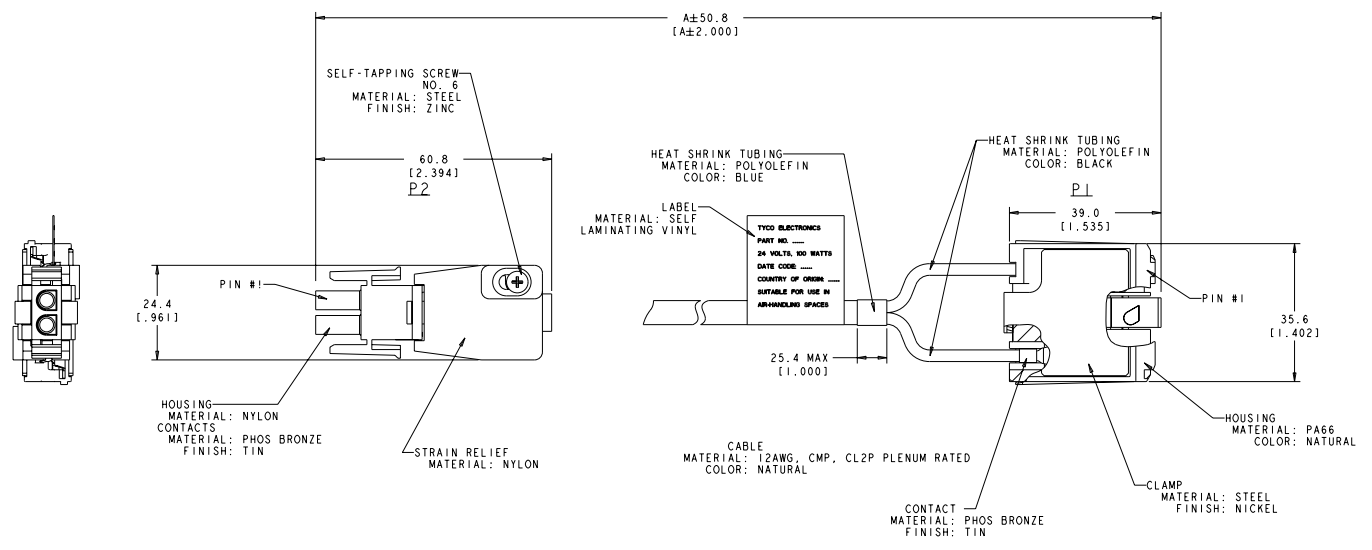


REV		REVISIONS			
CM	00	PLN	DESCRIPTION	DATE	BY
		A	SEE ECO-11-019559		

P1	P2
PIN #1	PIN #1
PIN #2	PIN #2

1. DIRECTIVE 2002/95/EC (ROHS) COMPLIANT.
 ⚠️ ITEMS 2106725-5 & -6 ARE TO REMAIN IN PRELIMINARY STATUS.



9144.0	2103725-6
7620.0	2106725-5
6096.0	2106725-4
4572.0	2106725-3
3048.0	2106725-2
1524.0	2106725-1
	DIM A
	(CABLE LENGTH) PART NO

THIS DRAWING IS A CONTROLLED DOCUMENT. **STE** TE Connectivity

REV	00	DATE	02/28/10	DESCRIPTION	ASSEMBLY, CABLE POWER-IN
DESIGNED BY	02/28/10	DATE	02/28/10	DESCRIPTION	ASSEMBLY, CABLE POWER-IN
APPROVED BY	02/28/10	DATE	02/28/10	DESCRIPTION	ASSEMBLY, CABLE POWER-IN
DATE	02/28/10	DESCRIPTION	ASSEMBLY, CABLE POWER-IN	REV	00
DATE	02/28/10	DESCRIPTION	ASSEMBLY, CABLE POWER-IN	REV	00
DATE	02/28/10	DESCRIPTION	ASSEMBLY, CABLE POWER-IN	REV	00

STE 2106725-1