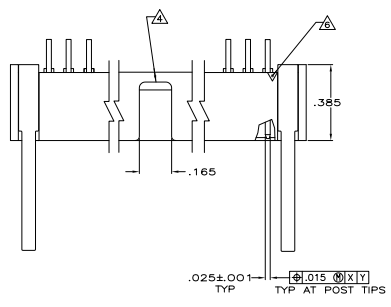
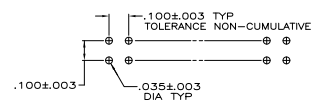
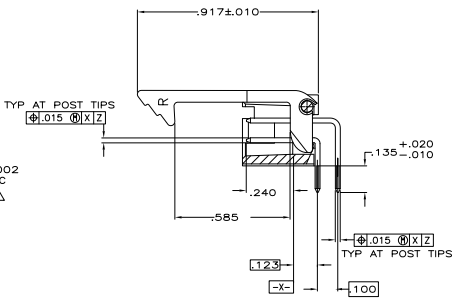
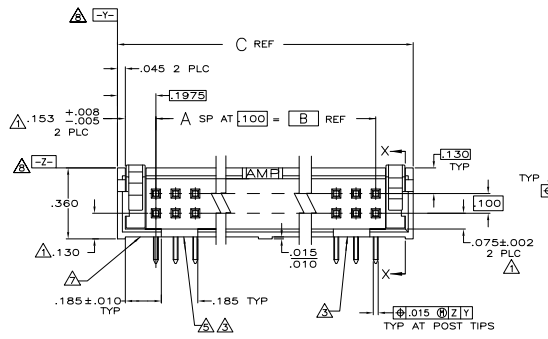


REV	DATE	DESCRIPTION	BY	CHK	APP
00					
K1		REVISED PER EDD-11-004835			



- △ THE NOTED DIMENSIONS APPLY AT THE INTERSECTION OF THE POST AND HOUSING
- △ POSTS: GOLD FLASH OVER PALLADIUM-NICKEL PLATE, .000030 MIN TOTAL ON THE MATING SURFACES, .000100 MIN TIN-LEAD PLATE ON THE SOLDER-TAILS, .000050 MIN NICKEL UNDERPLATE ON THE ENTIRE POST.
-OR-
.000030 MIN GOLD PLATE ON THE MATING SURFACES, .000100 MIN TIN-LEAD PLATE ON THE SOLDER-TAILS, .000050 MIN NICKEL UNDERPLATE ON THE ENTIRE POST.
- △ DOUBLE BAR POLARIZATION
- △ CENTER POLARIZATION SLOT
- △ FOR 10 POSN ASSEMBLY, SLOT OMITTED WHERE INDICATED
- △ NUMBER 1 POSITION INDICATOR.
- △ OPTIONAL AMP IDENTIFICATION NUMBER (DATE CODE).
LOCATION APPROXIMATELY WHERE SHOWN.



OBSOLETE	3.300	2.900	29	60	1-104130-0
OBSOLETE	2.800	2.400	24	50	104130-9
OBSOLETE	2.500	2.100	21	44	104130-8
OBSOLETE	2.300	1.900	19	40	104130-7
OBSOLETE	2.000	1.600	16	34	104130-6
OBSOLETE	1.600	1.200	12	26	104130-5
	1.300	.900	9	20	104130-4
	1.100	.700	7	16	104130-3
	1.000	.600	6	14	104130-2
	.800	.400	4	10	104130-1

THIS DRAWING IS A CONTROLLED DOCUMENT.

DATE: 2-28-97
 BY: CLARK
 CHECKED: 3-16-97
 DESIGNED: 3-16-97
 DRAWN: 3-16-97
 PART NO: 108-40018
 REV: 1

TE Connectivity
 HEADER ASSY, LOW PROFILE.
 AMP-LATCH

SIZE: A1
 DATE: 100779
 DRAWING NO: 104130
 CUSTOMER DRAWING

REVISIONS: 4.1
 SHEET: 1 OF 1
 BY: K1