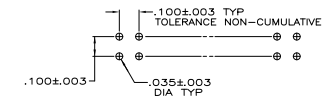
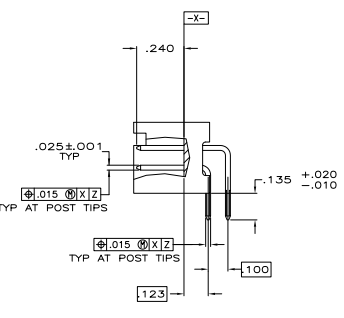
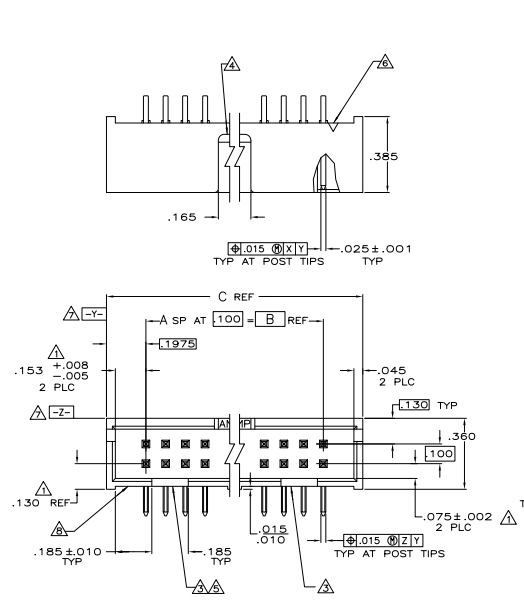


THIS DRAWING IS UNPUBLISHED
 ALL RIGHTS RESERVED

REV	DATE	DESCRIPTION	BY	CHK	APP
00					
M1		REVISED PER EDD-11-004835			



RECOMMENDED HOLE LAYOUT FOR MANUAL INSERTION

- △ THE NOTED DIMENSIONS APPLY AT THE INTERSECTION OF THE POST AND HOUSING
- △ POSTS: GOLD FLASH OVER PALLADIUM-NICKEL PLATE, .000030 MIN TOTAL ON THE MATING SURFACES, .000100 MIN TIN-LEAD PLATE ON THE SOLDER-TAILS, .000050 MIN NICKEL UNDERPLATE ON THE ENTIRE POST.
- OR-
- △ .000030 MIN GOLD PLATE ON THE MATING SURFACES, .000100 MIN TIN-LEAD PLATE ON THE SOLDER-TAILS, .000050 MIN NICKEL UNDERPLATE ON THE ENTIRE POST.
- △ DOUBLE BAR POLARIZATION
- △ CENTER POLARIZATION SLOT
- △ FOR 10 POSN ASSEMBLY, SLOT OMITTED WHERE INDICATED
- △ NUMBER 1 POSITION INDICATOR.
- △ DATUMS $-Y$ AND $-Z$ APPLY AT THE BASE OF THE SHROUD LALL.
- △ OPTIONAL AMP IDENTIFICATION NUMBER (DATE CODE) LOCATION APPROXIMATELY WHERE SHOWN.

	3.300	2.900	29	60	1-103311-2
OBSELETE	3.100	2.700	27	56	1-103311-1
	2.800	2.400	24	50	1-103311-0
OBSELETE	2.500	2.100	21	44	103311-9
	2.300	1.900	19	40	103311-8
	2.000	1.600	16	34	103311-7
	1.600	1.200	12	26	103311-6
	1.300	.900	9	20	103311-5
OBSELETE	1.200	.800	8	18	103311-4
	1.100	.700	7	16	103311-3
	1.000	.600	6	14	103311-2
	.800	.400	4	10	103311-1

THIS DRAWING IS A CONTROLLED DOCUMENT. REV. 01 MCH 87 (27)

BY: A. MASTER DATE: 8-2-87

BY: FLUCKER DATE: 8-2-87

PROJECT NO: 108-40018

OPERATION: 002

SIZE: A1 DATE ISS: 000779 DRAWING NO: 103311

REVISIONS: 1

WORKING DRAWING: CUSTOMER DRAWING

TE Connectivity
 HEADER ASSY, LOW PROFILE, AMP-LATCH

REWORKED TO: 1

DATE: 8-1 SHEET: 1 OF 1