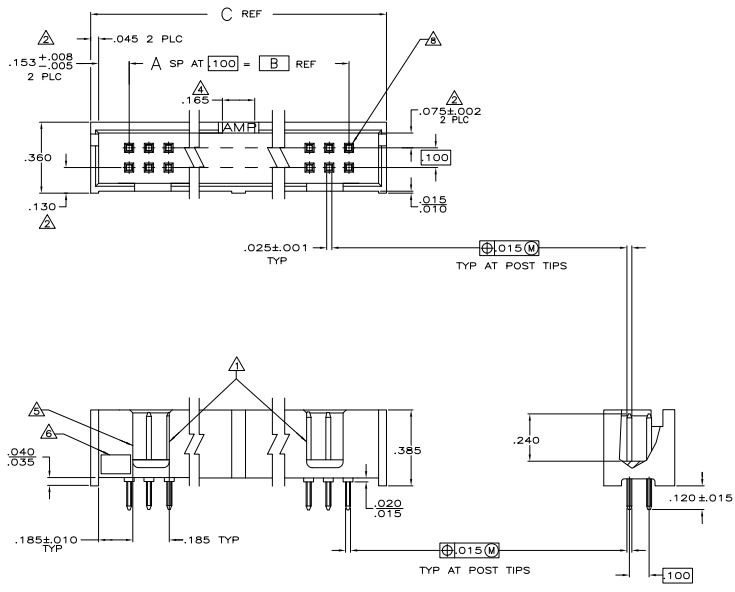
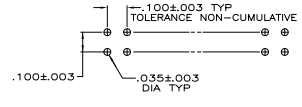


REV	DATE	DESCRIPTION	BY	CHK	APP
00					
01		REVISED PER EDD-11-004835			



- △ DOUBLE BAR POLARIZATION
- △ THE NOTED DIMENSIONS APPLY AT THE INTERSECTION OF THE POST AND HOUSING
- △ POSTS: GOLD FLASH OVER PALLADIUM-NICKEL PLATE, .000030 MIN TOTAL ON THE MATING SURFACES, .000100 MIN TIN-LEAD PLATE ON THE SOLDER-TAILS, .000050 MIN NICKEL UNDERPLATE ON THE ENTIRE POST.  
 -OR-  
 .000030 MIN GOLD PLATE ON THE MATING SURFACES, .000100 MIN TIN-LEAD PLATE ON THE SOLDER-TAILS, .000050 MIN NICKEL UNDERPLATE ON THE ENTIRE POST.
- △ CENTER POLARIZATION SLOT
- △ FOR 10 POSN ASSEMBLY, SLOT OMITTED WHERE INDICATED
- △ OPTIONAL AMP IDENTIFICATION NUMBER (DATE CODE), LOCATION APPROXIMATELY WHERE SHOWN.
- △ PACKAGED IN GANG OF TUBES.
- △ NUMBER 1 POSITION.



RECOMMENDED HOLE LAYOUT FOR MANUAL INSERTION

△ OBSOLETE	2.800	2.400	24	50	1-103309-8
OBSOLETE	1.500	1.100	11	24	1-103309-7
△ OBSOLETE	1.600	1.200	12	26	1-103309-4
△ OBSOLETE	1.300	.900	9	20	1-103309-3
OBSOLETE	3.300	2.900	29	60	1-103309-2
OBSOLETE	3.100	2.700	27	56	1-103309-1
△ OBSOLETE	2.800	2.400	24	50	1-103309-0
OBSOLETE	2.500	2.100	21	44	103309-9
△ OBSOLETE	2.300	1.900	19	40	103309-8
△ OBSOLETE	2.000	1.600	16	34	103309-7
△ OBSOLETE	1.600	1.200	12	26	103309-5
△ OBSOLETE	1.300	.900	9	20	103309-3
△ OBSOLETE	1.200	.800	8	18	103309-4
△ OBSOLETE	1.100	.700	7	16	103309-3
△ OBSOLETE	1.000	.600	6	14	103309-2
△ OBSOLETE	.800	.400	4	10	103309-1

THIS DRAWING IS A CONTROLLED DOCUMENT.		REV. NO. #37-47	DATE	TE Connectivity
DESIGNED BY: J. MEYER		REV. NO. #38-47	DATE	TE Connectivity
CHECKED BY: J. MEYER		REV. NO. #39-47	DATE	TE Connectivity
APPROVED BY: J. MEYER		REV. NO. #40-47	DATE	TE Connectivity
PART NO. 108-40018		DESCRIPTION: HEADER ASSY, LOW PROFILE, AMP-LATCH		
REV. NO. #41-47		REV. NO. #42-47		
REV. NO. #43-47		REV. NO. #44-47		
REV. NO. #45-47		REV. NO. #46-47		
REV. NO. #47-47		REV. NO. #48-47		
REV. NO. #49-47		REV. NO. #50-47		
REV. NO. #51-47		REV. NO. #52-47		
REV. NO. #53-47		REV. NO. #54-47		
REV. NO. #55-47		REV. NO. #56-47		
REV. NO. #57-47		REV. NO. #58-47		
REV. NO. #59-47		REV. NO. #60-47		
REV. NO. #61-47		REV. NO. #62-47		
REV. NO. #63-47		REV. NO. #64-47		
REV. NO. #65-47		REV. NO. #66-47		
REV. NO. #67-47		REV. NO. #68-47		
REV. NO. #69-47		REV. NO. #70-47		
REV. NO. #71-47		REV. NO. #72-47		
REV. NO. #73-47		REV. NO. #74-47		
REV. NO. #75-47		REV. NO. #76-47		
REV. NO. #77-47		REV. NO. #78-47		
REV. NO. #79-47		REV. NO. #80-47		
REV. NO. #81-47		REV. NO. #82-47		
REV. NO. #83-47		REV. NO. #84-47		
REV. NO. #85-47		REV. NO. #86-47		
REV. NO. #87-47		REV. NO. #88-47		
REV. NO. #89-47		REV. NO. #90-47		
REV. NO. #91-47		REV. NO. #92-47		
REV. NO. #93-47		REV. NO. #94-47		
REV. NO. #95-47		REV. NO. #96-47		
REV. NO. #97-47		REV. NO. #98-47		
REV. NO. #99-47		REV. NO. #100-47		