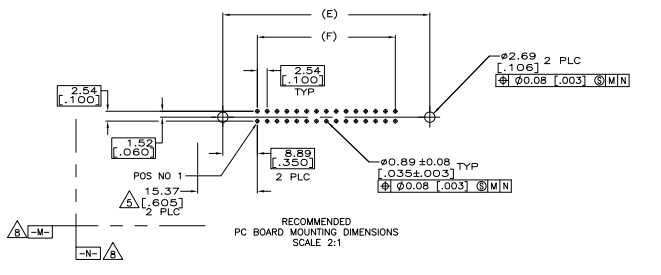
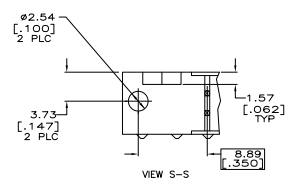
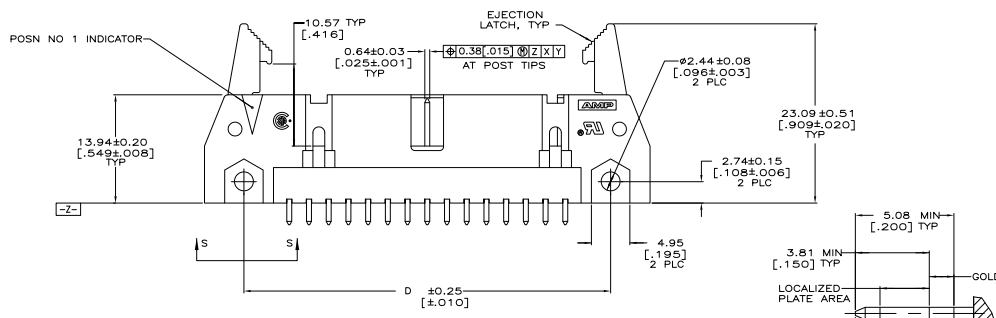
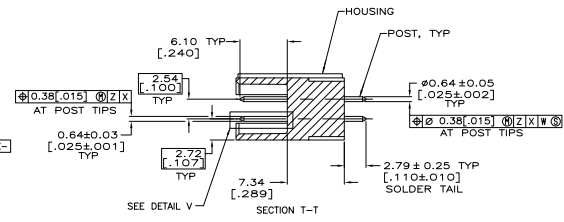
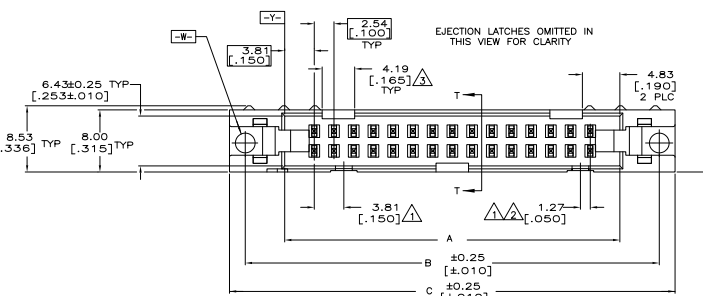


THIS DRAWING IS UNCLASSIFIED  
 UNLESS OTHERWISE INDICATED  
 ALL RIGHTS RESERVED

REV	DATE	DESCRIPTION	BY	CHK	APP
00					
01		REVISED PER EDD-11-004835			



- △ COORDINATE DIMENSION APPLIES FROM BASIC LOCATION.
- △ 10 AND 14 POSITION SIZES CONTAIN ONLY ONE SLOT FOR SNAP-IN POLARIZER (MILITARY POLARIZATION) LOCATED AS SHOWN.
- △ 10 POSITION SIZES CONTAIN ONLY ONE SLOT FOR DUAL POLARIZATION, LOCATED AS SHOWN.
- 4. RECOMMENDED PRINTED CIRCUIT BOARD THICKNESS IS 1.57 [0.62].
- △ DISTANCE REQUIRED BY EJECTION LATCHES IN THE OPEN POSITION.
- △ HOUSING & LATCHES: GLASS FILLED NYLON OR POLYESTER, UL94V-0 RATED, BLACK. POSTS: PHOS BRONZE OR BRASS.
- △ POSTS:  
 GOLD FLASH OVER PALLADIUM-NICKEL PLATE, 0.38µm [0.00015] MIN TOTAL ON THE LOCALIZED PLATE AREA.  
 2.54µm [0.00100] MIN TIN PLATE ON THE SOLDER-TAIL.  
 1.27µm [0.00050] MIN NICKEL UNDERPLATE ON THE ENTIRE POST.  
 OR  
 0.38µm [0.00015] MIN GOLD PLATE ON THE LOCALIZED PLATE AREA.  
 2.54µm [0.00100] MIN TIN PLATE ON THE SOLDER-TAIL.  
 1.27µm [0.00050] MIN NICKEL UNDERPLATE ON THE ENTIRE POST.
- △ DATUMS -M- & -N- TO BE ESTABLISHED BY CUSTOMER.

	F	E	D	C	B	A	NO OF POSN	PART NUMBER
OBSOLETE	78.74	96.52	90.42	100.58	96.52	86.36	64	1-5499910-2
	3.100	3.800	3.560	3.960	3.800	3.400		
OBSOLETE	73.66	91.44	85.34	95.50	91.44	81.28	60	1-5499910-1
	2.900	3.600	3.360	3.760	3.600	3.200		
	60.96	78.74	72.64	82.80	78.74	68.58	50	1-5499910-0
	2.400	3.100	2.860	3.260	3.100	2.700		
	48.26	66.04	59.94	70.10	66.04	55.88	40	5499910-9
	1.900	2.600	2.360	2.760	2.600	2.200		
	40.64	58.42	52.32	62.48	58.42	48.26	34	5499910-8
	1.800	2.500	2.260	2.460	2.300	1.900		
	35.56	53.34	47.24	57.40	53.34	43.18	30	5499910-7
	1.400	2.100	1.860	2.260	2.100	1.700		
	30.48	48.26	42.16	52.32	48.26	38.10	26	5499910-6
	1.200	1.900	1.660	2.060	1.900	1.500		
	27.94	45.72	39.62	49.78	45.72	35.56	24	5499910-5
	1.100	1.800	1.560	1.960	1.800	1.400		
	22.86	40.64	34.54	44.70	40.64	30.48	20	5499910-4
	1.000	1.600	1.360	1.760	1.600	1.200		
	17.78	35.56	29.46	39.62	35.56	25.40	16	5499910-3
	1.000	1.400	1.160	1.560	1.400	1.000		
	15.24	33.02	26.92	37.08	33.02	22.86	14	5499910-2
	1.000	1.300	1.060	1.460	1.300	1.000		
	10.16	27.94	21.84	32.00	27.94	17.78	10	5499910-1
	1.000	1.100	1.860	1.260	1.100	1.700		

THIS DRAWING IS A CONTROLLED DOCUMENT.

REVISED PER EDD-11-004835

DATE: 108-40018

DATE: 100779

DATE: 54999110

DATE: 4.1

DATE: 1

DATE: C1

TE Connectivity

HEADER ASSY, UNIVERSAL AMP-LATCH

SIZE: 108-40018

SIZE: 100779

SIZE: 54999110

SIZE: 4.1

SIZE: 1

SIZE: C1