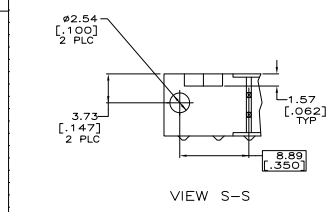
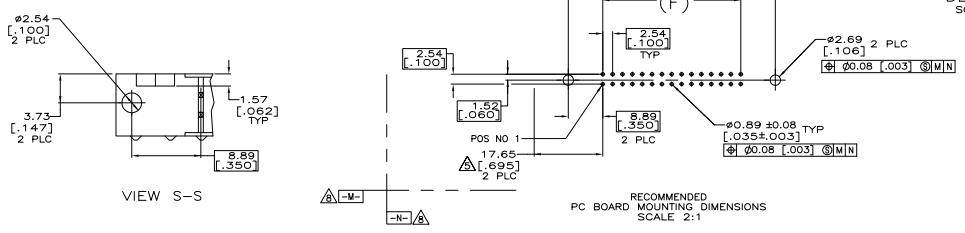
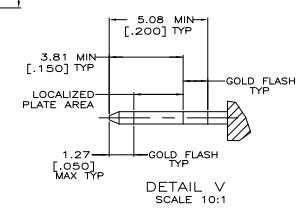
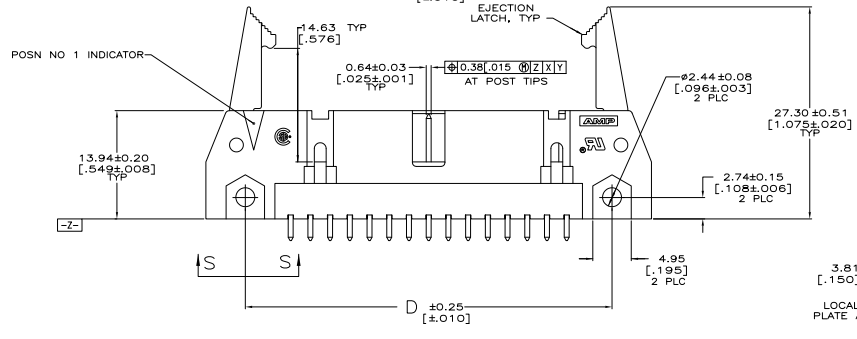
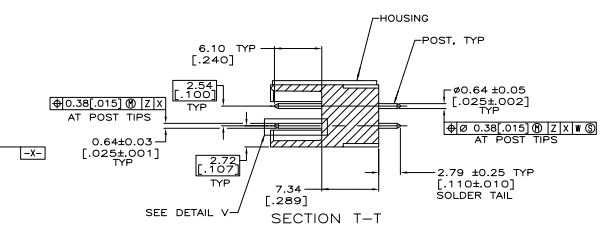
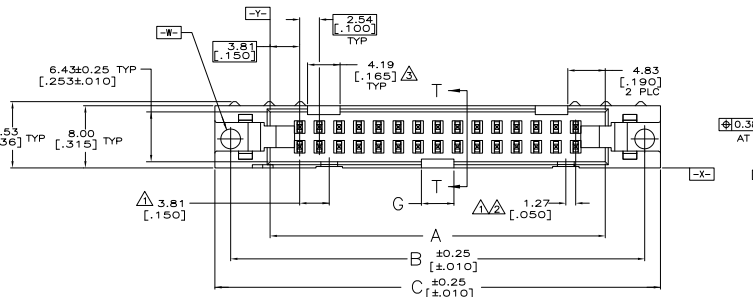


THIS DRAWING IS UNPUBLISHED
 ALL RIGHTS RESERVED

REV	DESCRIPTION	DATE	BY	APP
00				
E1	REVISED PER EOD-11-004835	11MAR11	RK	HMR

EJECTION LATCHES OMITTED IN THIS VIEW FOR CLARITY



SEE SHEET 2 FOR TABLE & NOTES

THIS DRAWING IS A CONTROLLED DOCUMENT.		REV: 03-27-04	DATE: 07-27-07	BY: M. BOLASH	DATE: 07-27-07	APP: M. BOLASHLEY	DATE: 07-27-07	TE Connectivity
UNLESS NOTED OTHERWISE:	UNLESS NOTED OTHERWISE:	UNIT: MILLIMETER	UNIT: INCHES	TOLERANCES:	TOLERANCES:	REFERENCES:	REFERENCES:	TE Connectivity
Ø = DIMENSIONED AT POS TIPS	Ø = DIMENSIONED AT POS TIPS	Ø = DIMENSIONED AT POS TIPS	Ø = DIMENSIONED AT POS TIPS	Ø = DIMENSIONED AT POS TIPS	Ø = DIMENSIONED AT POS TIPS	Ø = DIMENSIONED AT POS TIPS	Ø = DIMENSIONED AT POS TIPS	TE Connectivity
Ø = DIMENSIONED AT POS TIPS	Ø = DIMENSIONED AT POS TIPS	Ø = DIMENSIONED AT POS TIPS	Ø = DIMENSIONED AT POS TIPS	Ø = DIMENSIONED AT POS TIPS	Ø = DIMENSIONED AT POS TIPS	Ø = DIMENSIONED AT POS TIPS	Ø = DIMENSIONED AT POS TIPS	TE Connectivity
Ø = DIMENSIONED AT POS TIPS	Ø = DIMENSIONED AT POS TIPS	Ø = DIMENSIONED AT POS TIPS	Ø = DIMENSIONED AT POS TIPS	Ø = DIMENSIONED AT POS TIPS	Ø = DIMENSIONED AT POS TIPS	Ø = DIMENSIONED AT POS TIPS	Ø = DIMENSIONED AT POS TIPS	TE Connectivity
Ø = DIMENSIONED AT POS TIPS	Ø = DIMENSIONED AT POS TIPS	Ø = DIMENSIONED AT POS TIPS	Ø = DIMENSIONED AT POS TIPS	Ø = DIMENSIONED AT POS TIPS	Ø = DIMENSIONED AT POS TIPS	Ø = DIMENSIONED AT POS TIPS	Ø = DIMENSIONED AT POS TIPS	TE Connectivity

- △ COORDINATE DIMENSION APPLIES FROM BASIC LOCATION.
- △ 6 POSITION SIZE DOES NOT HAVE SLOTS FOR SNAP-IN POLARIZER (MILITARY POLARIZATION). 10 AND 14 POSITION SIZES CONTAIN ONLY ONE SLOT FOR SNAP-IN POLARIZER (MILITARY POLARIZATION) LOCATED AS SHOWN.
- △ 6 POSITION SIZE DOES NOT HAVE SLOTS FOR DUAL POLARIZATION. 10 POSITION SIZES CONTAIN ONLY ONE SLOT FOR DUAL POLARIZATION, LOCATED AS SHOWN.
- 4. RECOMMENDED PRINTED CIRCUIT BOARD THICKNESS IS 1.57 [.062].
- △ DISTANCE REQUIRED BY EJECTION LATCHES IN THE OPEN POSITION.
- △ HOUSING & LATCHES: GLASS FILLED NYLON OR POLYESTER, UL 94V-0 RATED, SEE TABLE FOR COLOR. POSTS: PHOS BRONZE OR BRASS.
- △ POSTS: GOLD FLASH OVER PALLADIUM-NICKEL PLATE, 0.76µm[.000030] MIN TOTAL ON THE LOCALIZED PLATE AREA, 2.54µm[.000100] MIN TIN PLATE ON THE SOLDER-TAIL, 1.27µm[.000050] MIN NICKEL UNDERPLATE ON THE ENTIRE POST.
-OR-
0.76µm[.000030] MIN GOLD PLATE ON THE LOCALIZED PLATE AREA, 2.54µm[.000100] MIN TIN PLATE ON THE SOLDER-TAIL, 1.27µm[.000050] MIN NICKEL UNDERPLATE ON THE ENTIRE POST.
- △ DATUMS -M- & -N- TO BE ESTABLISHED BY CUSTOMER.
- △ DEVELOPMENT PART NUMBER, REV 1 - NOT RELEASED FOR PRODUCTION.

POSTS	2,78 [.110]	5,08 [2,00]	22,86 [9,00]	16,76 [6,60]	26,92 [1,060]	22,86 [9,00]	12,70 [5,00]	6	△
BLUE		53,34	71,12	65,02	75,18	71,12	60,96	44	3-5499206-3
OBSOLETE BLUE		78,74	96,52	90,42	100,58	96,52	86,36	64	3-5499206-2
OBSOLETE BLUE		73,66	91,44	85,34	95,50	91,44	81,28	60	3-5499206-1
OBSOLETE BLUE		60,96	78,74	72,64	82,80	78,74	68,58	50	3-5499206-0
OBSOLETE BLUE		48,26	66,04	59,94	70,10	66,04	55,88	40	2-5499206-9
OBSOLETE BLUE		40,64	58,42	52,32	62,48	58,42	48,26	34	2-5499206-8
OBSOLETE BLUE		35,56	53,34	47,24	57,40	53,34	43,18	30	2-5499206-7
OBSOLETE BLUE		30,48	48,26	42,16	52,32	48,26	38,10	26	2-5499206-6
OBSOLETE BLUE		22,86	40,64	34,54	44,70	40,64	30,48	20	2-5499206-4
OBSOLETE BLUE		17,78	35,56	29,46	39,62	35,56	25,40	16	2-5499206-3
OBSOLETE BLUE		15,24	33,02	26,92	37,08	33,02	22,86	14	2-5499206-2
OBSOLETE BLUE		10,16	27,94	21,84	32,00	27,94	17,78	10	2-5499206-1
BLACK	4,19 [.165]	78,74	96,52	90,42	100,58	96,52	86,36	64	1-5499206-2
BLACK		73,66	91,44	85,34	95,50	91,44	81,28	60	1-5499206-1
BLACK		60,96	78,74	72,64	82,80	78,74	68,58	50	1-5499206-0
BLACK		48,26	66,04	59,94	70,10	66,04	55,88	40	5499206-9
BLACK		40,64	58,42	52,32	62,48	58,42	48,26	34	5499206-8
BLACK		35,56	53,34	47,24	57,40	53,34	43,18	30	5499206-7
BLACK		30,48	48,26	42,16	52,32	48,26	38,10	26	5499206-6
BLACK		27,94	45,72	39,62	49,78	45,72	35,56	24	5499206-5
BLACK		22,86	40,64	34,54	44,70	40,64	30,48	20	5499206-4
BLACK		17,78	35,56	29,46	39,62	35,56	25,40	16	5499206-3
BLACK		15,24	33,02	26,92	37,08	33,02	22,86	14	5499206-2
BLACK		10,16	27,94	21,84	32,00	27,94	17,78	10	5499206-1

THIS DRAWING IS A CONTROLLED DOCUMENT. UNLESS INDICATED OTHERWISE, ALL RIGHTS RESERVED. © 2010

DATE: 10/20/09 BY: M. WILMUSLEY
 PART: 108-40018
 REV: 1

TE Connectivity
 TE Connectivity
 TE Connectivity
 TE Connectivity

SIZE: A1
 SHEET: 2
 OF: 2

CUSTOMER DRAWING