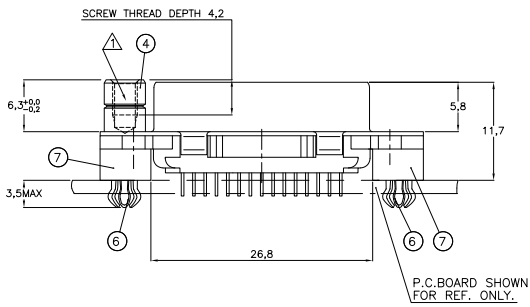
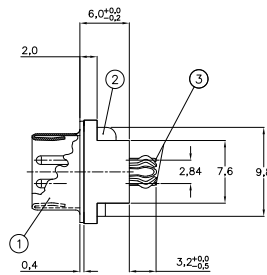
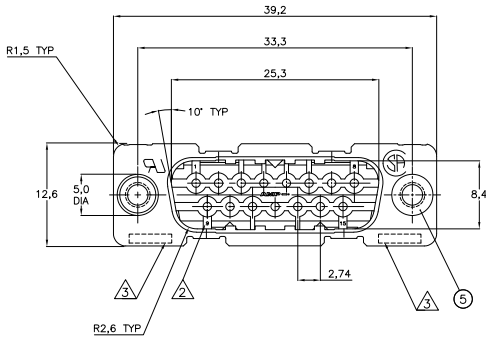
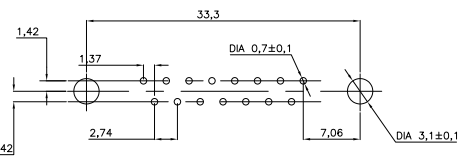


THIS DRAWING IS UNPUBLISHED. RELEASED FOR PUBLICATION. ALL RIGHTS RESERVED.

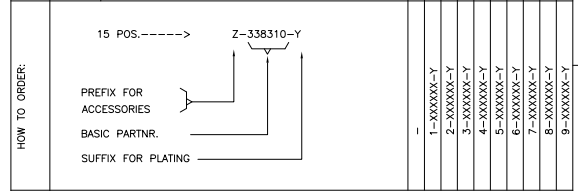
LOC	DIST	REVISIONS			
F	LNK	DESCRIPTION	DATE	BY	APP
H	-	REVISED PER ECO-11-005294	02APR11	RK	HMR



RECOMMENDED P.C. BOARD HOLE-LAYOUT



ITEM NR.	DESCRIPTION OF ACCESSORY	1	2	3	4	5	6	7	8	9
5	BUSHING WITH THROUGH HOLE 3,1 DIA.		2							
5	BUSHING WITH THREAD 4-40 UNC	1								
5	BUSHING WITH THREAD M3		2							
4	FEMALE SCREWLOCK WITH THREAD 4-40 UNC			2						
4	FEMALE SCREWLOCK WITH THREAD M3				2					
6	BOARDLOCK	2	2	2	2	2	2	2	2	2



PLATING SUFFIX	DESCRIPTION
-	GOLD OVER NICKEL AS PER PERFORMANCE LEVEL 2 (DIN 41652)
-Y	SOLDERPART: TIN-PLATING 3µm

- △ GROOVE INDICATES VERSION WITH 4-40 UNC INNER THREAD; WITHOUT GROOVE INDICATES VERSION WITH M3 INNER THREAD.
- △ CAVITY IDENTIFICATION AT FRONT SIDE ONLY.
- △ PARTNUMBER AND DATE CODE.
- 4 WHEN BOARDLOCKS ARE USED, CONNECTOR CAN BE USED FOR PCB THICKNESS OF 1,6 mm ONLY.
- 5 SHELL HAS 2x4 GROUNDING SPRINGS; PITCH IS 3,6 mm
- 6 AIR AND CREEPAGE DISTANCES ACCORDING TO DIN41652

- ITEM NRS./MATERIAL :
- ① SHELL : BRIGHT TINPLATED STEEL
 - ② HOUSING : GLASSFILLED POLYESTER, COLOR : BLACK
 - ③ CONTACTS : PHOSPHORBRONZE (PLATING : SEE TABLE ABOVE)
 - ④ FEMALE SCREWLOCK : TINPLATED STEEL (INNER THREAD 4-40 UNC OR M3)
 - ⑤ BUSHING : TINPLATED STEEL (INNER THREAD 4-40 UNC OR M3 OR 3,1 DIA. THROUGH HOLE)
 - ⑥ BOARDLOCK : TINPLATED PHOSPHORBRONZE
 - ⑦ STAND-OFF : ULTRAMID V0 COLOR : BLACK

THIS DRAWING IS A CONTROLLED DOCUMENT. DIM: 03JXJ97, J. J. LIEMPT, C. SOUSA, W. SOOMERS, PRODUCT SPEC, APPLICATION SPEC, WEIGHT, FINISH.

TE Connectivity
HDP-20 SIZE 2
VERTICAL+ PLUG HEADER;
WITH SOLDER CONTACTS

SIZE: A2, ONE CODE: 00779, DRAWING NO: C=338310, RESTRICTED TO: F3

CUSTOMER DRAWING, SCALE: 1:1, SHEET: 1 of 1, REV: F3