

4

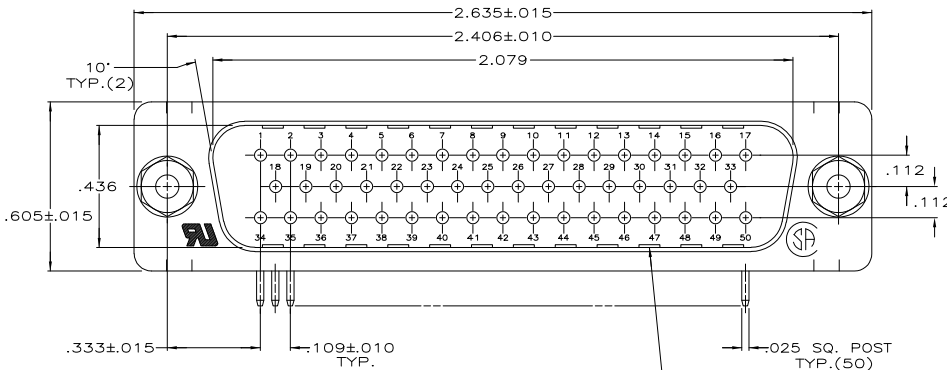
3

2

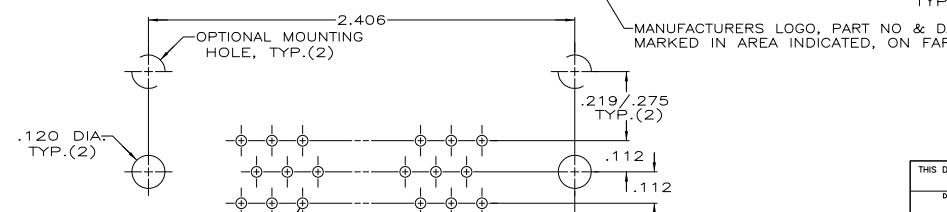
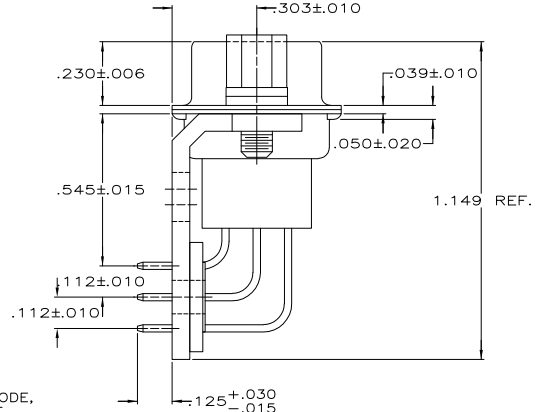
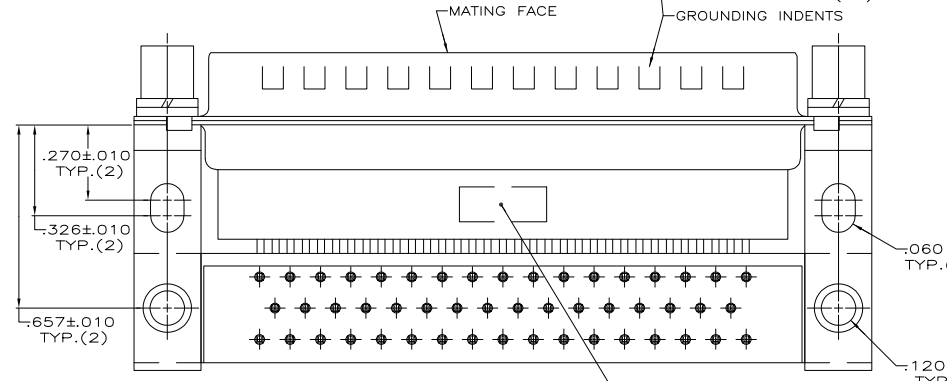
1

THIS DRAWING IS UNPUBLISHED. RELEASED FOR PUBLICATION
 BY TYCO ELECTRONICS CORPORATION. ALL RIGHTS RESERVED.

LOC		DIBT		REVISIONS			
GP	00	P	LTR	DESCRIPTION	DATE	MIN	APD
		A		REVISED PER ECO-04-028268	8/FEB/07	ZMR	EDB



- CONNECTOR MATES WITH ANY 50 POS. PLUG IN AMPLIMITE SERIES & COMPLIES WITH AMP SPEC. 108-40005 WHERE APPLICABLE.
- MOLDED PARTS: THERMOPLASTIC, UL 94V-0 RATED, BLACK. SHELLS, BRACKETS, SCREWLOCKS AND WASHERS: CARBON STEEL CONTACTS: PHOS BRONZE EYELETS: BRASS
- BRACKETS: .000200 MIN TIN OVER .000050 MIN COPPER. SHELLS: .000200 MIN TIN OVER .000100 MIN COPPER. EYELETS: UNPLATED SCREWLOCKS & WASHERS: ZINC PLATED WITH CLEAR CHROMATE COATING. CONTACTS: .000030 MIN GOLD FOR A LENGTH OF .150 MIN FROM MATING END, .000100 MIN BRIGHT TIN-LEAD ON OPPOSITE END, BOTH OVER .000050 MIN NICKEL. -OR- GOLD FLASH OVER .000030 MIN PALLADIUM NICKEL FOR A LENGTH OF .150 MIN FROM MATING END, .000100 MIN BRIGHT TIN-LEAD ON OPPOSITE END, BOTH OVER .000050 MIN NICKEL.



COPYRIGHT 2003
 TYCO ELECTRONICS CORP
 ALL RIGHTS RESERVED

1658595-1
PART NUMBER

THIS DRAWING IS A CONTROLLED DOCUMENT.		DIM L BAUM 11AUG03 OK C EULP 11AUG03 APP M. WALMSLEY 11AUG03 PRODUCT SPEC APPLICATION SPEC WEIGHT FINISH	tyco Electronics Tyco Electronics Corporation Harrisburg, PA 17105-3608 PLUG ASSEMBLY, SIZE 5, 50 POSITION, RIGHT ANGLE, .545 SERIES, .025 SQ. POSTS, AMPLIMITE™ HDP SIZE CASE CODE DRAWING NO. RESTRICTED TO A2 00779 C=1658595 CUSTOMER DRAWING SCALE 4:1 SHEET 1 of 1 REV A
--	--	--	---

AMP 1471-9 REV 31MM2000