

4

3

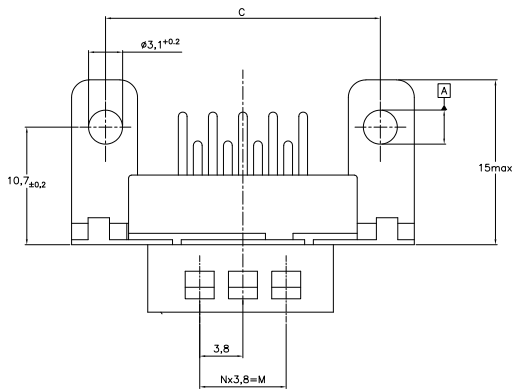
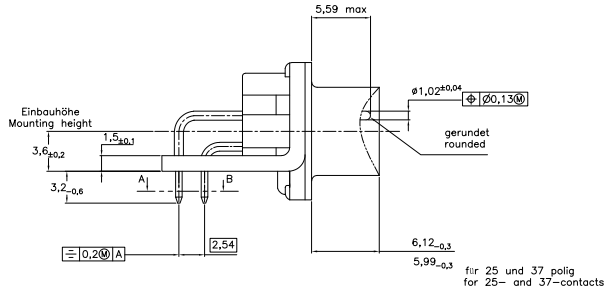
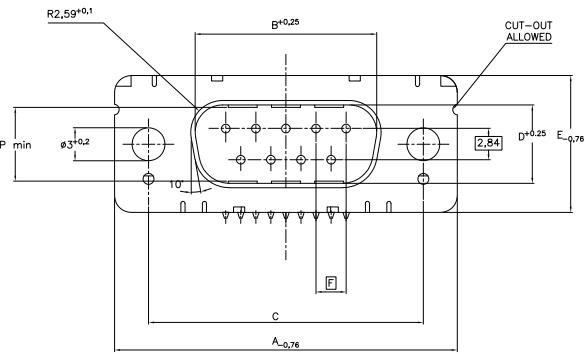
2

1

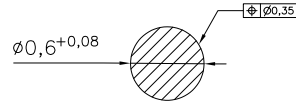
THIS DRAWING IS UNPUBLISHED. RELEASED FOR PUBLICATION. ALL RIGHTS RESERVED.

LOC		DIST		REVISIONS			
F	LNK	DESCRIPTION	DATE	BY	APPD		
AS		REVISED PER ECO-11-005294	05APR11	RK	HMR		
AB		ECR-11-013553	07JUL11	RK	KMA		

Standardausführung: V23529-Bx121-Cxxx-+
Standardversion



Schnitt AB des Lötanschlusses
Cross-section AB of solderpin
(20:1)



Ordercode Sachnr	Contacts Polzahl	Mass/Dimension								
		A	B	C	D	E	F	M	N	P
..-Cx09-+	09	31,19	16,79	25,0 ^{+0,12} _{-0,13}	8,23	12,93	2,74	7,6	2	7,72
..-Cx15-+	15	39,52	25,12	33,3 ^{+0,15} _{-0,21}	8,23	12,93	2,74	15,2	4	7,69
..-Cx25-+	25	53,42	38,84	47,04 ^{+0,13} _{-0,13}	8,23	12,93	2,76	26,6	7	7,65
..-Cx37-+	37	69,7	55,30	63,5 ^{+0,13} _{-0,13}	8,23	12,93	2,76	41,8	11	7,65

Anforderungsstufe/Performance level 1)

OLD PN: V23529-Bx***-C***-7427

1) nach DIN 41652 T.2 und T.4
according to DIN 41652 T.2 and T.4

THIS DRAWING IS A CONTROLLED DOCUMENT. DWG: SNANI_JADAV_A_F 07JAN10
 DWG: K.MALCZYK
 NAME: K.MALCZYK
 PRODUCT SPEC: -
 APPLICATION SPEC: -
 WEIGHT: -
 MATERIAL: -
 FINISH: -

TE Connectivity
 Sub-D 90° Lötanschluss Stiftleiste
 Einbauhöhe 3,6 mm
 D-Sub 90° solder version Pin connector
 mounting height 3,6 mm

SIZE: A2 00779 C=2-1393480-1
 SCALE: 2:1 SHEET: 1 of 6 REV: A6

4

3

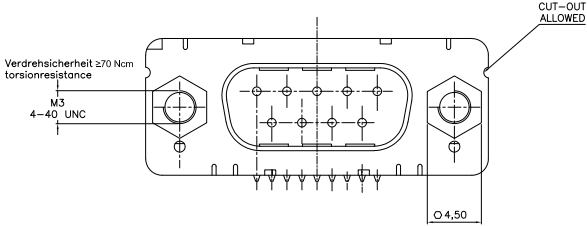
2

1

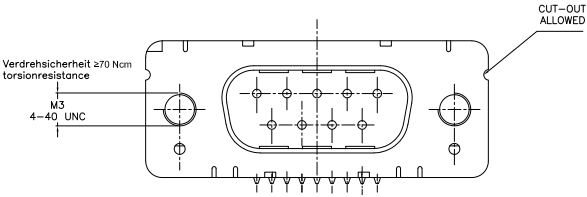
THIS DRAWING IS UNPUBLISHED. RELEASED FOR PUBLICATION. ALL RIGHTS RESERVED.

LOC	DIST	REVISIONS	DATE	BY	APP
CW	-	F LWR	-	-	-
-	-	SEE SHEET1	-	-	-

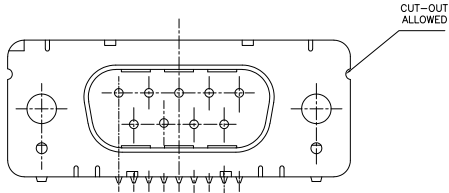
mit Gewindebolzen: M3 V23529-Bxx24-Cxxx-+
with thread lock 4-40 UNC V23529-Bxx25-Cxxx-+



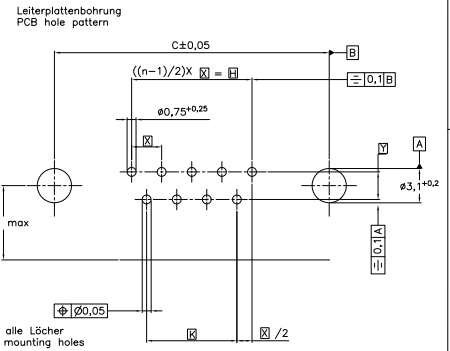
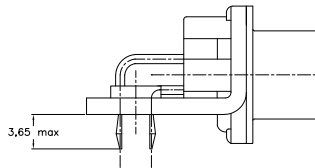
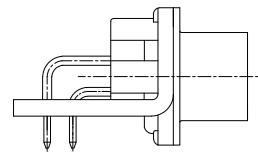
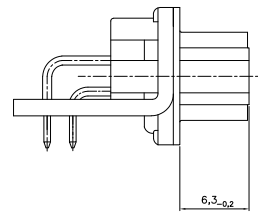
mit Gewinde: M3 V23529-Bxx22-Cxxx-+
with thread 4-40 UNC V23529-Bxx23-Cxxx-+



mit Clipbefestigung: V23529-Bx22x-Cxxx-+
with snap-in



LP-Dicke 1,6±0,13mm, Loch $\phi 3,1^{+0,2}$
PC-board-thickness 1,6±0,13mm, Hole $\phi 3,1^{+0,2}$



Mass Dimension	Polzahl n Number of contacts n			
	9	15	25	37
C	25	33,3	47,04	63,5
H	10,96	19,18	33,12	49,68
K	8,22	16,44	30,36	46,92
X	2,74	2,74	2,76	2,76
Y		2,54		

1) nach DIN 41652 T.2 UND T.4
according to DIN 41652 p.2 AND p.4

OLD PN: V23529-B****-C***-x-7427

THIS DRAWING IS A CONTROLLED DOCUMENT.		DN	STANISLAW JADAWIA F	TE Connectivity	
DIMENSIONS: mm		CHK	K. MALCZYK	Sub-D 90° Löttauführung Stiftleiste	
TOLERANCES UNLESS OTHERWISE SPECIFIED:		APPD	K. MALCZYK	Einbauhöhe 3,6 mm	
0 PL	±	PRODUCT SPEC		D-Sub 90° solder version Pin connector	
1 PL	±	APPLICATION SPEC		mounting height 3,6 mm	
2 PL	±	WEIGHT		SIZE	ONE CODE DRAWING NO
3 PL	±			A2	00779
4 PL	±			C=2	1393480-1
ANGLES	±			SCALE	2:1
MATERIAL				SHEET	2 of 6
FINISH				REV	A6
CUSTOMER DRAWING					

4

3

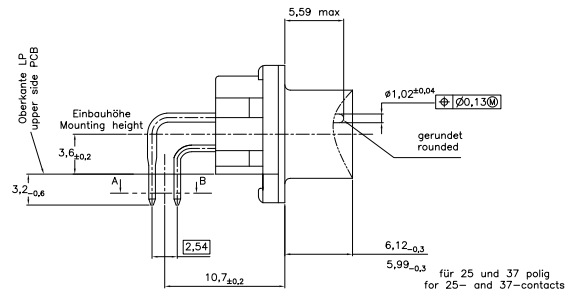
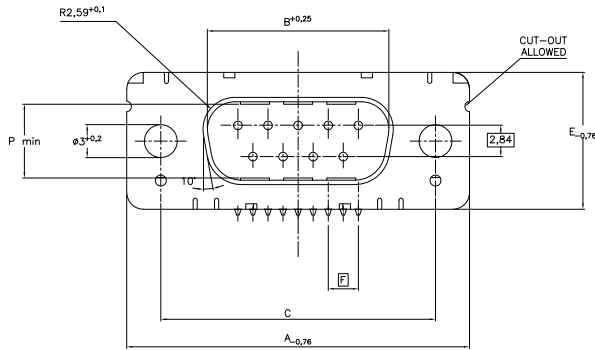
2

1

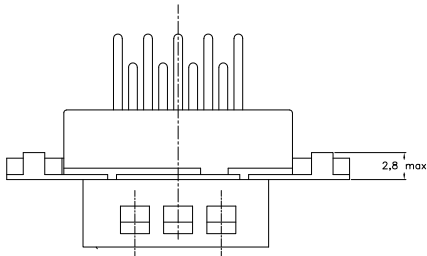
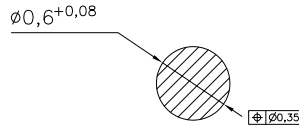
THIS DRAWING IS UNPUBLISHED. RELEASED FOR PUBLICATION. ALL RIGHTS RESERVED.

LOC	DIST	REVISIONS	DATE	BY	APPD
CW	-	F LWR	-	-	-
		SEE SHEET 1	-	-	-

Standardausführung ohne Winkel: V23529-B50x1-Cxxx-+
Standardversion without bracket



Schnitt AB des Lötanschlusses
Cross-section AB of solderpin
(20:1)



Ordercode Sachnr	Contacts Polzahl	Mass/Dimension								
		A	B	C	D	E	F	M	N	P
...Cx09-+	09	31,19	16,79	25,0 ^{+0,12} _{-0,13}	8,23	12,93	2,74	7,6	2	7,72
...Cx15-+	15	39,52	25,12	33,3 ^{+0,15} _{-0,17}	8,23	12,93	2,74	15,2	4	7,69
...Cx25-+	25	53,42	38,84	47,04 ^{+0,13} _{-0,13}	8,23	12,93	2,76	26,6	7	7,65
...Cx37-+	37	69,7	55,30	63,5 ^{+0,13} _{-0,13}	8,23	12,93	2,76	41,8	11	7,65

Anforderungsstufe/Performance level ¹⁾

OLD PN: V23529-B***-C***-*-7427

¹⁾ nach DIN 41652 T.2 und T.4
according to DIN 41652 T.2 and T.4

THIS DRAWING IS A CONTROLLED DOCUMENT.		DN	SNANI_JADAV A F	07/2010	
DIMENSIONS: mm		GW	K MALCZYK		
TOLERANCES UNLESS OTHERWISE SPECIFIED:		ZPDC	K MALCZYK		
0 PLC	±	APPLICATION SPEC			
1 PLC	±	WEIGHT			
2 PLC	±				
3 PLC	±				
4 PLC	±				
ANGLES	±				
MATERIAL					
FINISH					

TE Connectivity

Sub-D 90° Lötansführung Stiftleiste
Einbauhöhe 3,6 mm
D-Sub 90° solder version Pin connector
mounting height 3,6 mm

SIZE: A2

ONE CODE: 00779

DRAWING NO: C=2-1393480-1

RESTRICTED TO: -

CUSTOMER DRAWING SCALE: 2:1 SHEET: 3 of 6 REV: A6

4

3

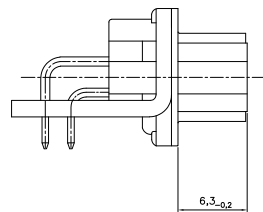
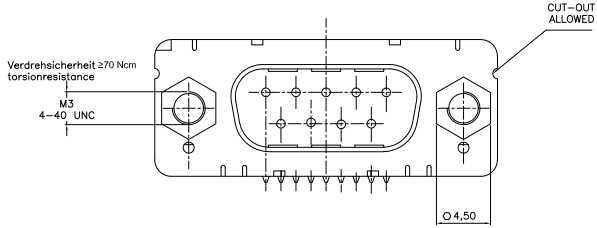
2

1

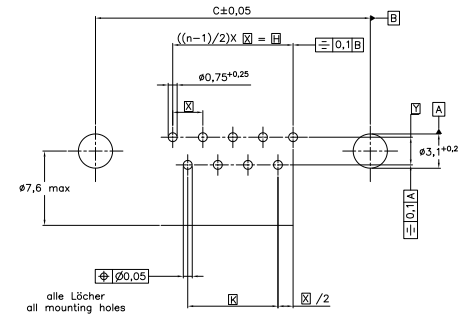
THIS DRAWING IS UNPUBLISHED. RELEASED FOR PUBLICATION. ALL RIGHTS RESERVED.

LOC	DIST	REVISIONS	DATE	BY	APPD
CW	-	DESCRIPTION	-	-	-
-	-	SEE SHEET 1	-	-	-

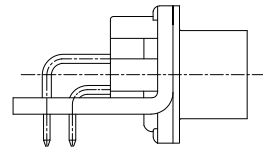
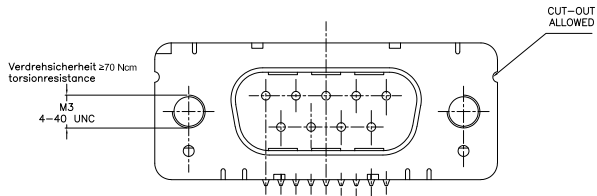
mit Gewindebolzen: M3 V23529-B50x4-Cxxx-+
with thread lock 4-40 UNC V23529-B50x5-Cxxx-+



Leiterplattenbohrung
PCB hole pattern



mit Gewinde: M3 V23529-B50x2-Cxxx-+
with thread 4-40 UNC V23529-B50x3-Cxxx-+



Mass Dimension	Polzahl n Number of contacts n			
	9	15	25	37
C	25	33,3	47,04	63,5
H	10,96	19,18	33,12	49,68
K	8,22	16,44	30,36	46,92
X	2,74	2,74	2,76	2,76
Y	2,54			

1) nach DIN 41652 T,2 UND T,4
according to DIN 41652 p,2 AND p,4

OLD PN: V23529-B***-C***-7427

THIS DRAWING IS A CONTROLLED DOCUMENT.		DN SNANI JADAV A F	DTAKTIO	TE Connectivity	
DIMENSIONS: mm		PK K MALCZYK	NAME	Sub-D 90° Löttauführung Stiftleiste Einbauhöhe 3,6 mm D-Sub 90° solder version Pinconnector mounting height 3,6 mm	
TOLERANCES UNLESS OTHERWISE SPECIFIED:		PK K MALCZYK	PRODUCT SPEC	SIZE	RESTRICTED TO
0 PLC	±	---	---	A2	---
1 PLC	±	---	---	00779	---
2 PLC	±	---	---	C=2-1393480-1	---
3 PLC	±	---	---	SCALE	4 of 6
4 PLC	±	---	---	2:1	REV A6
ANGLES	±	---	---	SHEET	---
MATERIAL	---	---	---	CUSTOMER DRAWING	---
FINISH	---	---	---	---	---

1471-9 (3/11)

2-1393480-1

A

4

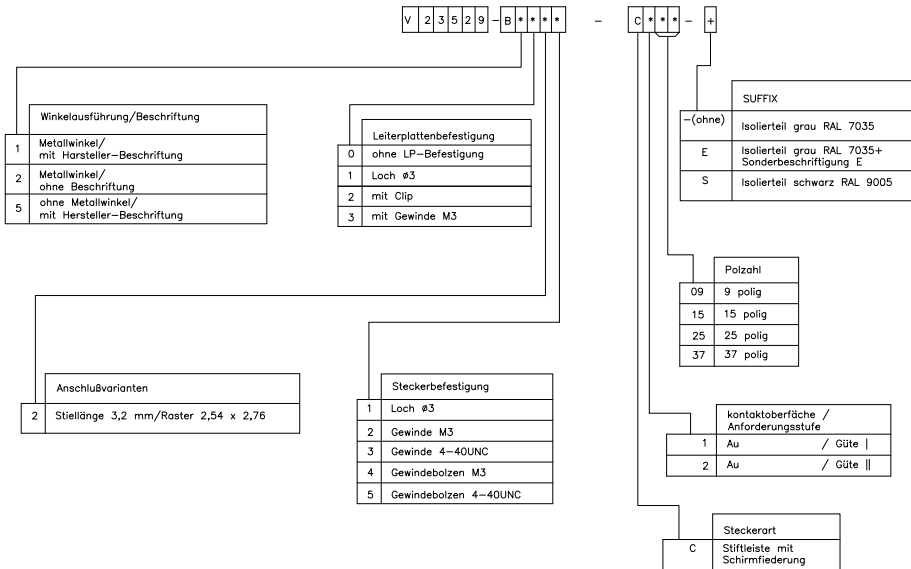
3

2

1

THIS DRAWING IS UNPUBLISHED. RELEASED FOR PUBLICATION. ALL RIGHTS RESERVED.

LOC	DIST	REVISIONS	DATE	BY	APPD
CW					
		DESCRIPTION			
		SEE SHEET 1			



OLD PN: V23529-B****-C****-7427

1) nach DIN 41652 T.2 und T.4
according to DIN 41652 p.2 and p.4

THIS DRAWING IS A CONTROLLED DOCUMENT.		DN	07JAN10	TE Connectivity	
DIMENSIONS: mm		DN	SNANL JADAV A F	Sub-D 90° Lötanschluss Stiftleiste	
TOLERANCES UNLESS OTHERWISE SPECIFIED:		DN	K MALCZYK	Einbauhöhe 3,6 mm	
0 PLC ±		DN	K MALCZYK	D-Sub 90° solder version Pin connector	
1 PLC ±		DN		mounting height 3,6 mm	
2 PLC ±		APPLICATION SPEC		SIZE	ONE CODE DRAWING NO.
3 PLC ±		WEIGHT		A2	00779 C=2-1393480-1
4 PLC ±		FINISH		SCALE	2:1
ANGLES				SHEET	5 of 6
MATERIAL				REV	A6
CUSTOMER DRAWING					

1471-9 (3/11)

2-1393480-1

A

4

3

2

1

THIS DRAWING IS UNPUBLISHED. RELEASED FOR PUBLICATION
 © copyright - By - ALL RIGHTS RESERVED.

LOC	DIST	REVISIONS				
		F	LR	DATE	DRN	APD
CW	-	-	-	SEE SHEET 1	-	-

Active part numbers. Contact TE CONNECTIVITY for other configuration availability

Old Part Number	TE CONNECTIVITY Part Number
V23529-B1121-C209	2-1393480-1
V23529-B1121-C215	2-1393480-2
V23529-B1121-C225	2-1393480-3
V23529-B1121-C237	2-1393480-4
V23529-B1122-C209	3-1393480-2
V23529-B1122-C215	3-1393480-3
V23529-B1122-C225	2-1392010-8
V23529-B1122-C237	3-1392010-6
V23529-B1123-C209	4-1393480-0
V23529-B1123-C215	4-1393480-1
V23529-B1123-C225	4-1393480-2
V23529-B1123-C237	4-1393480-3
V23529-B1125-C125	5-1393480-1
V23529-B1125-C209	5-1393480-2
V23529-B1125-C215	5-1393480-3
V23529-B1125-C225	5-1393480-4
V23529-B1125-C237	3-1392010-5
V23529-B1221-C109	5-1393480-8
V23529-B1221-C209	5-1393480-9

Old Part Number	TE CONNECTIVITY Part Number
V23529-B1221-C215	6-1393480-0
V23529-B1222-C209	7-1393480-4
V23529-B1222-C215	7-1393480-5
V23529-B1222-C225	7-1393480-6
V23529-B1222-C237	7-1393480-7
V23529-B1223-C209	8-1393480-5
V23529-B1223-C215	8-1393480-6
V23529-B1223-C225	8-1393480-7
V23529-B1223-C237	8-1393480-8
V23529-B1224-C209	9-1393480-4
V23529-B1224-C215	9-1393480-5
V23529-B1224-C225	9-1393480-6
V23529-B1225-C109	1393481-4
V23529-B1225-C209	1393481-5
V23529-B1225-C215	3-1392010-3
V23529-B1225-C225	1393481-6
V23529-B1225-C237	3-1392010-4
V23529-B2121-C209	1-1393481-0
V23529-B2221-C209	1-1393481-2

1) nach DIN 41652 T.2 und T.4
 according to DIN 41652 p.2 and p.4

OLD PN: V23529-B****-C****-7427

THIS DRAWING IS A CONTROLLED DOCUMENT.		DRN SNANI, JADAV A F	07JAN10	TE Connectivity	
DIMENSIONS: mm		DRW. K. MALCZYK	APD. K. MALCZYK	NAME Sub-D 90° Löttauführung Stiftleiste Einbauhöhe 3,6 mm D-Sub 90°solder version Pin connector mounting height 3,6 mm	
TOLERANCES UNLESS OTHERWISE SPECIFIED: 0 PLC ± 1 PLC ± 2 PLC ± 3 PLC ± 4 PLC ± ANGLES ±		APPLICATION SPEC: ---	SIZE A2	ONE CODE 00779	DRAWING NO. C=2-1393480-1
MATERIAL ---	FINISH ---	WEIGHT ---	CUSTOMER DRAWING	SCALE 2:1	SHEET 6 of 6
			REV A6	RESTRICTED TO ---	

1471-9 (3/11)

2-1393480-1

A