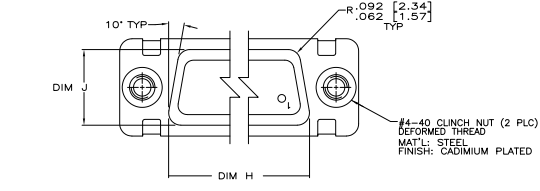
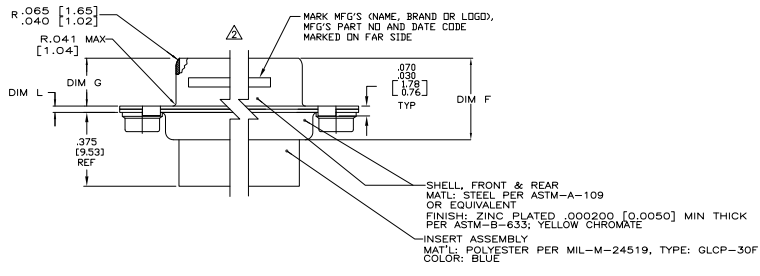
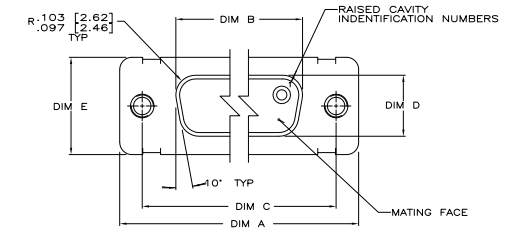


REV	DATE	DESCRIPTION	BY	CHK	APP
B	11-3-05	REV PER ECO 05-12286	CT	DM	
C	21-8-08	REV PER ECO 08-09782	PK	BW	



1. THE CONNECTORS DESCRIBED IN THIS DOCUMENT WILL MATE WITH ANY PLUG CONNECTOR WITH THE SAME INSERT ARRANGEMENT.
- MARKED WITH .047 [1.19]-.062 [1.57] HIGH CHARACTERS. FAR SIDE REFERS TO THE WIDE SIDE OF THE KEYSTONE. NEAR SIDE REFERS TO THE NARROW SIDE OF THE KEYSTONE. IF THE FRONT SHELL IS TOO SMALL FOR "MFG'S"(NAME, BRAND OR LOGO) MFG'S PART NUMBER AND DATE CODE, THEN SPLIT AS FOLLOWS:
 A. MFG'S PART NUMBER ON REAR SHELL, NEAR SIDE.
 B. "MFG'S" (NAME, BRAND OR LOGO) AND DATE CODE ON FRONT SHELL, NEAR SIDE.

.049 [1.24]	.544 [13.80]	2.188 [55.68]	.248 [6.30]	.439 [11.15]	.650 [16.51]	.458 [11.67]	.241 [6.12]	2.063 [52.50]	2.550 [64.91]	MS18277-1	50	5	1218749-5
.029 [0.74]	.324 [8.31]	2.188 [55.68]	.238 [6.03]	.419 [10.64]	.650 [16.51]	.418 [10.62]	.240 [6.10]	2.063 [52.50]	2.620 [66.51]	MS18276-1	37	4	1218749-4
.049 [1.24]	.432 [10.97]	2.282 [57.96]	.248 [6.30]	.439 [11.15]	.609 [15.47]	.316 [8.03]	2.505 [63.63]	2.164 [54.97]	2.744 [69.70]	MS18275-1	26	3	1218749-3
.029 [0.74]	.412 [10.46]	2.282 [57.96]	.238 [6.03]	.419 [10.64]	.609 [15.47]	.306 [7.77]	2.495 [63.37]	2.164 [54.97]	2.714 [68.94]	MS18274-1	15	2	1218749-2
.049 [1.24]	.432 [10.97]	1.635 [41.53]	.248 [6.30]	.439 [11.15]	.609 [15.47]	.316 [8.03]	1.977 [50.17]	1.516 [38.51]	2.103 [53.42]	MS18273-1	9	1	1218749-1
.029 [0.74]	.412 [10.46]	1.635 [41.53]	.238 [6.03]	.419 [10.64]	.609 [15.47]	.306 [7.77]	1.977 [50.17]	1.516 [38.51]	2.073 [52.65]				
.040 [1.02]	.432 [10.97]	1.073 [27.25]	.248 [6.30]	.439 [11.15]	.609 [15.47]	.316 [8.03]	1.307 [33.20]	.966 [24.54]	1.566 [39.76]				
.040 [1.02]	.432 [10.97]	.769 [19.53]	.248 [6.30]	.439 [11.15]	.609 [15.47]	.316 [8.03]	.989 [25.11]	.648 [16.46]	1.228 [31.19]				
.020 [0.51]	.412 [10.46]	.749 [19.02]	.238 [6.03]	.419 [10.64]	.479 [12.17]	.306 [7.77]	.979 [24.87]	.638 [16.21]	1.198 [30.43]				

THIS DRAWING IS A CONTROLLED DOCUMENT. DATE 11-2-05 BY J. MILLER

RECEPTACLE ASSY, AMPLITE, SERIES 109, ZINC PLATED WITH 4-40 CLUNCH NUTS

REV: A | 00779 | G=1218749

CUSTOMER DRAWING