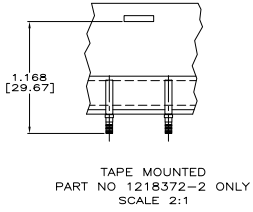
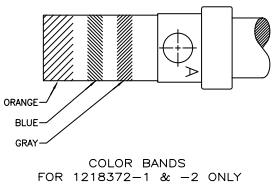
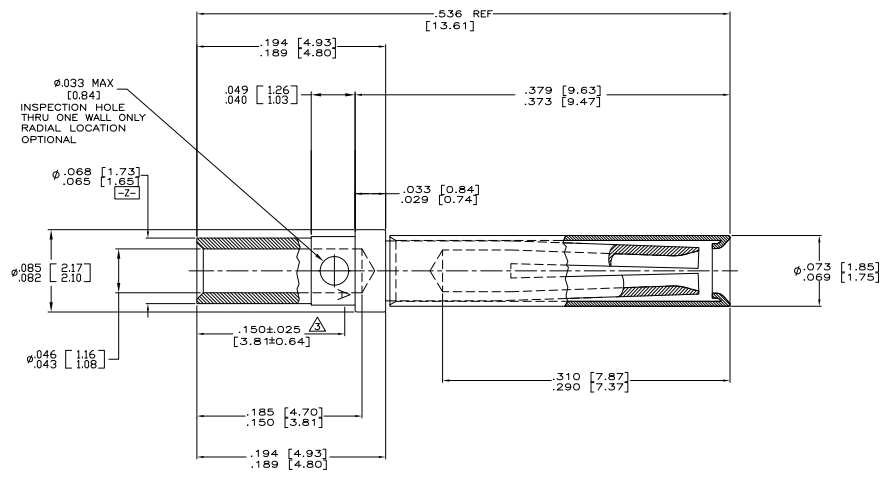


THIS DRAWING IS UNPUBLISHED
 ALL DIMENSIONS UNLESS OTHERWISE SPECIFIED ARE IN INCHES
 DECIMALS AND FRACTIONS
 ALL DIMENSIONS SHALL BE TO UNLESS OTHERWISE SPECIFIED

REV		DESCRIPTION	DATE	BY	APP
A	1	REV PER ECO 00-013463	6-18-99	CT	RL



- Δ FINISH: GOLD PLATED PER MIL-C-45204, TYPE II, OVER NICKEL PER QQ-N-290.
- Δ FINISH: GOLD PLATED PER MIL-C-45204, TYPE II, OVER COPPER PER MIL-C-14550, CLASS 4.
- Δ POINT OF PLATING THICKNESS MEASUREMENT.
- 4. ALL DIAMETERS [Z [0.004] Z] UNLESS OTHERWISE SPECIFIED.
- 5. THIS PART COMPLIES WITH MIL-C-39029/63 AND M24308/10-1.
- 6. ALL SURFACES HAVE A6.3 OR BETTER FINISH, UNLESS OTHERWISE SPECIFIED.

WITHOUT COLOR CODE	CONTACTS ON TAPE	AS SHOWN	FINISH	PART NUMBER
Δ	Δ	Δ		1218372-3
	Δ	Δ		1218372-2
		Δ		1218372-1

SUPERSEDED BY 205090-2		REMARKS	FINISH	PART NUMBER

THIS DRAWING IS A CONTROLLED DOCUMENT		DATE		REV		BY		APP	
DESIGNED	11-21-99	11-21-99							
DRAWN	11-21-99	11-21-99							
CHECKED	11-21-99	11-21-99							
APPROVED	11-21-99	11-21-99							

DESCRIPTION	QUANTITY	UNIT	DATE	REV	BY	APP
#20 SOCKET CONTACT, CRIMP, AMP/LMITE						