

4

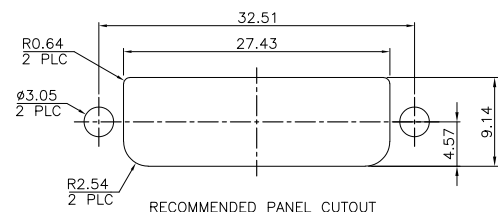
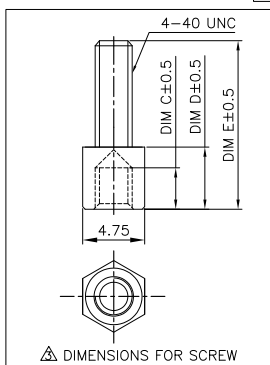
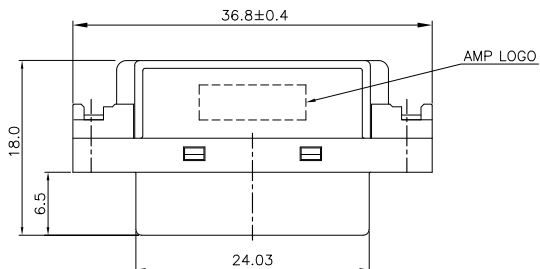
3

2

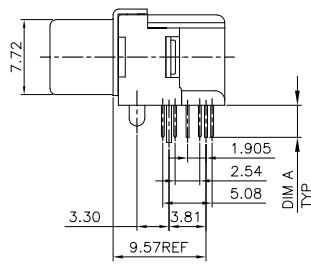
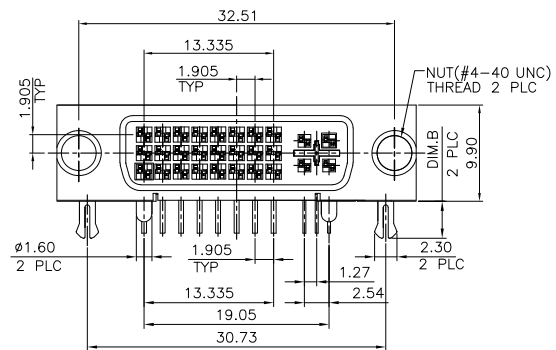
1

THIS DRAWING IS UNPUBLISHED. RELEASED FOR PUBLICATION. ALL RIGHTS RESERVED.

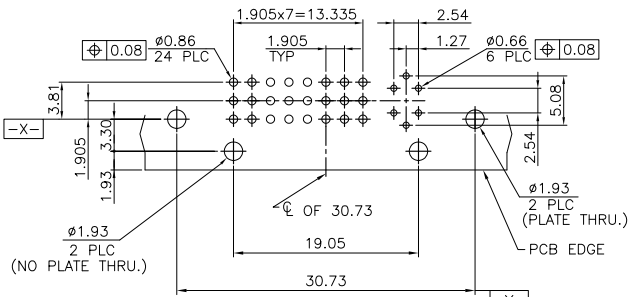
LOC	DIST	REVISIONS				
P	LTR	DESCRIPTION	DATE	DWN	APVD	
	C2	REVISED PER ECO-11-005301	07MAR11	RK	HMR	



- NOTE:
- MATERIAL:
 - HOUSING: SPS WITH 30% GF, UL 94V-0, WHITE COLOR.
 - SPACER: SPS WITH 30% GF, UL 94V-0, NATURE COLOR.
 - CONTACTS: PHOSPHOR BRONZE.
 - SHELL: SPCC
 - NUTS AND BOARDLOCKS: BRASS.
 - FINISH:
 - CONTACTS: (SEE TABLE) GOLD PLATED ON CONTACT AREA.
 - 2.54mm [100µm] MIN. TIN PLATED ON SOLDER TAIL, WITH ENTIRE CONTACT UNDERPLATED 1.27mm [50µm] MIN. NICKEL.
 - SHELL: 1.27mm [50µm] MIN. NICKEL PLATED.
 - NUTS: 1.27mm [50µm] NICKEL PLATED.
 - BOARDLOCKS: 2.54mm [100µm] MIN. TIN PLATED OVER 1.27mm [50µm] MIN. NICKEL UNDERPLATED OVERALL.



OBsolete PARTS: OBSOLETE CIS STREAMLINING PER D.RENAUD/D.SINISI		11.8	4.8	3.2	2.50	3.30			
△	OBsolete	13.0	6.0	4.4			W/	GOLD FLASH	3-1734148-1
		13.0	6.0	4.4			W/	GOLD FLASH	2-1734148-1
		13.0	6.0	4.4			W/	0.76µm[30µm]	1-1734148-3
		13.0	6.0	4.4			W/	0.254µm[10µm]	1-1734148-2
		13.0	6.0	4.4	2.50	2.34	W/	GOLD FLASH	1-1734148-1
							W/O	0.76µm[30µm]	1734148-3
							W/O	0.254µm[10µm]	1734148-2
							W/O	GOLD FLASH	1734148-1
							△	SCREW	GOLD PLATED
									PART NUMBER



RECOMMENDED PCB LAYOUT TOP VIEW, TOLERANCE: ±0.05

THIS DRAWING IS A CONTROLLED DOCUMENT.

DIMENSIONS: MM	TOLERANCES UNLESS OTHERWISE SPECIFIED:	DWN S. CHIEN 05MAR2008	 TE Connectivity
0 PLC ± -	1 PLC ± 0.35	CHK S. HOU 05MAR2008	
2 PLC ± 0.25	3 PLC ± 0.15	APVD W. KODAMA 05MAR2008	NAME
4 PLC ± -	ANGLES ± 1°	PRODUCT SPEC	DVI-I ANALOG & DIGITAL CONN., RCPT. RIGHT-ANGLE
MATERIAL SEE NOTE	FINISH SEE NOTE	APPLICATION SPEC	SIZE CAGE CODE DRAWING NO RESTRICTED TO
		WEIGHT 10g	A3 00779 C=1734148
		CUSTOMER DRAWING	SCALE SHEET 1 of 2 REV C2

4

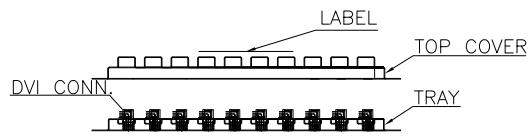
3

2

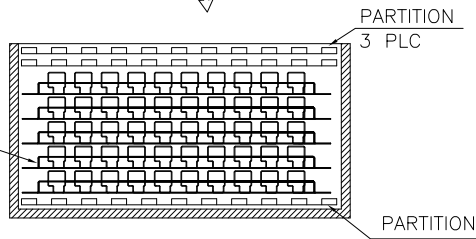
1

THIS DRAWING IS UNPUBLISHED. RELEASED FOR PUBLICATION
 © COPYRIGHT - BY - ALL RIGHTS RESERVED.

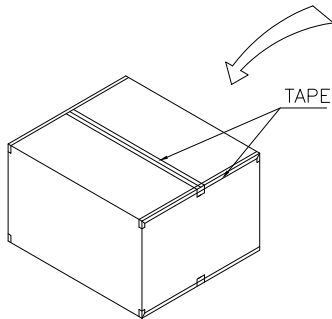
LOC		DIST		REVISIONS				
P	LTR	DESCRIPTION			DATE	DWN	APVD	
-	-	SEE SHEET 1.			-	-	-	



18.1	275	340	TOP COVER
10.5	275	340	TRAY
146	278	340	BOX
H	W	L	SIZE PACK



5 TRAY PER BOX



4.43 Kg	3.50 Kg	70	5	350 PCS
GROSS WEIGHT	NET WEIGHT	PCS/TRAY	TRAYS /BOX	QUANTITY

THIS DRAWING IS A CONTROLLED DOCUMENT.

DIMENSIONS: MM	TOLERANCES UNLESS OTHERWISE SPECIFIED: 0 PLC ± - 1 PLC ± - 2 PLC ± - 3 PLC ± - 4 PLC ± - ANGLES ± -	DWN CHK APVD	TE Connectivity NAME DVI-I ANALOG & DIGITAL CONN., RCPT. RIGHT-ANGLE	
MATERIAL	FINISH	PRODUCT SPEC APPLICATION SPEC WEIGHT	SIZE A3	RESTRICTED TO
		CAGE CODE 00779	DRAWING NO C=1734148	
CUSTOMER DRAWING			SCALE	SHEET 2 of 2 REV C2