

4

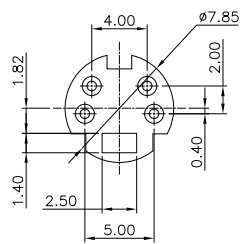
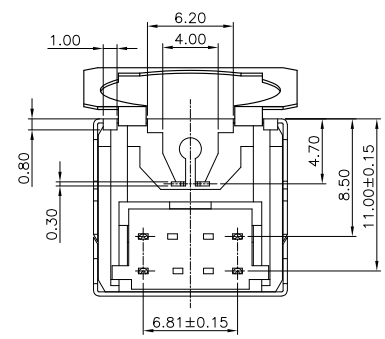
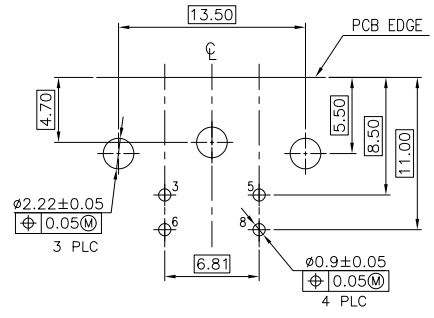
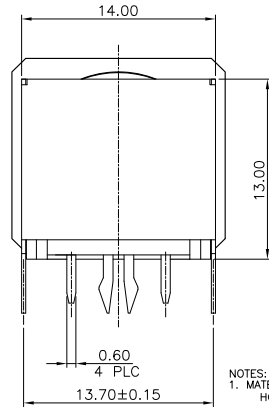
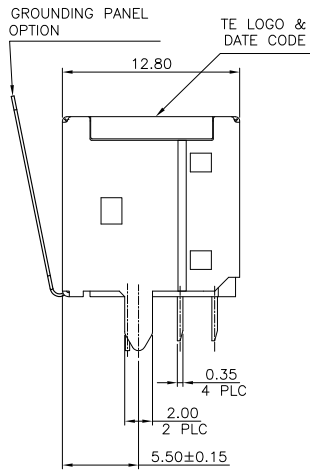
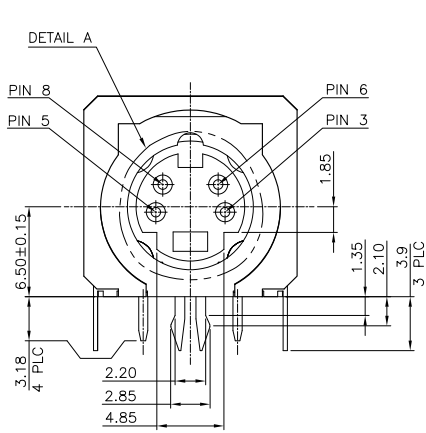
3

2

1

THIS DRAWING IS UNPUBLISHED. RELEASED FOR PUBLICATION
 © COPYRIGHT - BY - ALL RIGHTS RESERVED.

LOC	DIST	REVISIONS			
P	LTR	DESCRIPTION	DATE	DWN	APVD
DW	-				
A1		REVISED PER ECO-11-005301	11APR11	RK	HMR



- NOTES:
- MATERIAL:
 - HOUSING: THERMOPLASTIC(SEE TABLE), WITH 30% GLASS FIBER FILLED, UL 94V-0 RATED, COLOR: BLACK.
 - SPACER: THERMOPLASTIC, WITH 30% GLASS FIBER FILLED, UL 94V-0 RATED, COLOR: SEE TABLE.
 - CONTACT: PHOSPHOR BRONZE, (T=0.20mm,0.40mm).
 - SHIELD: BRASS, (T=0.30mm).
 - GROUNDING STRIP: STAINLESS STEEL (T=0.10mm)
 - FINISH:
 - CONTACT: GOLD FLASH IN CONTACT AREA, 3.048µm [120µ" MIN. BRIGHT TIN PLATING ON SOLDER TAILS.
 - 1.270µm [50µ" MIN. NICKEL UNDERPLATED ALL OVER.
 - SHIELD: 0.762µm [30µ" MIN. NICKEL PLATING OVER 0.762µm [30µ" MIN. Cu UNDERPLATING OVERALL
- ⚠ WAVE SOLDER CAPABLE TO 265°C PER TE CONNECTIVITY SPEC109-202, CONDITION B.
 ⚠ REFLOW SOLDER CAPABLE TO 260°C PER TE CONNECTIVITY SPEC 109-201, CONDITION B.

WHITE	⚠ PA46	W/	1-1734752-2
	⚠ PA46	W/O	1-1734752-1
BLACK	⚠ PBT	W/	0-1734752-2
	⚠ PBT	W/O	0-1734752-1
SPACER'S COLOR	HSG.MATERIAL	GROUNDING PANEL	PART NUMBER

THIS DRAWING IS A CONTROLLED DOCUMENT.

DIMENSIONS:	TOLERANCES UNLESS OTHERWISE SPECIFIED:	DWN	18OCT2007	 TE Connectivity	MINI DIN CONNECTOR, 4 POS, DIP TYPE
MM		CHK	18OCT2007		
		APVD	18OCT2007		
		NAME			
		PRODUCT SPEC			
		APPLICATION SPEC			
MATERIAL	FINISH	WEIGHT	SIZE	CAGE CODE	DRAWING NO
SEE NOTE	SEE NOTE	3.80 GRAMS	A3	00779	1734752
		CUSTOMER DRAWING	SCALE	SHEET	REV
			-	1 of 2	A1

4

3

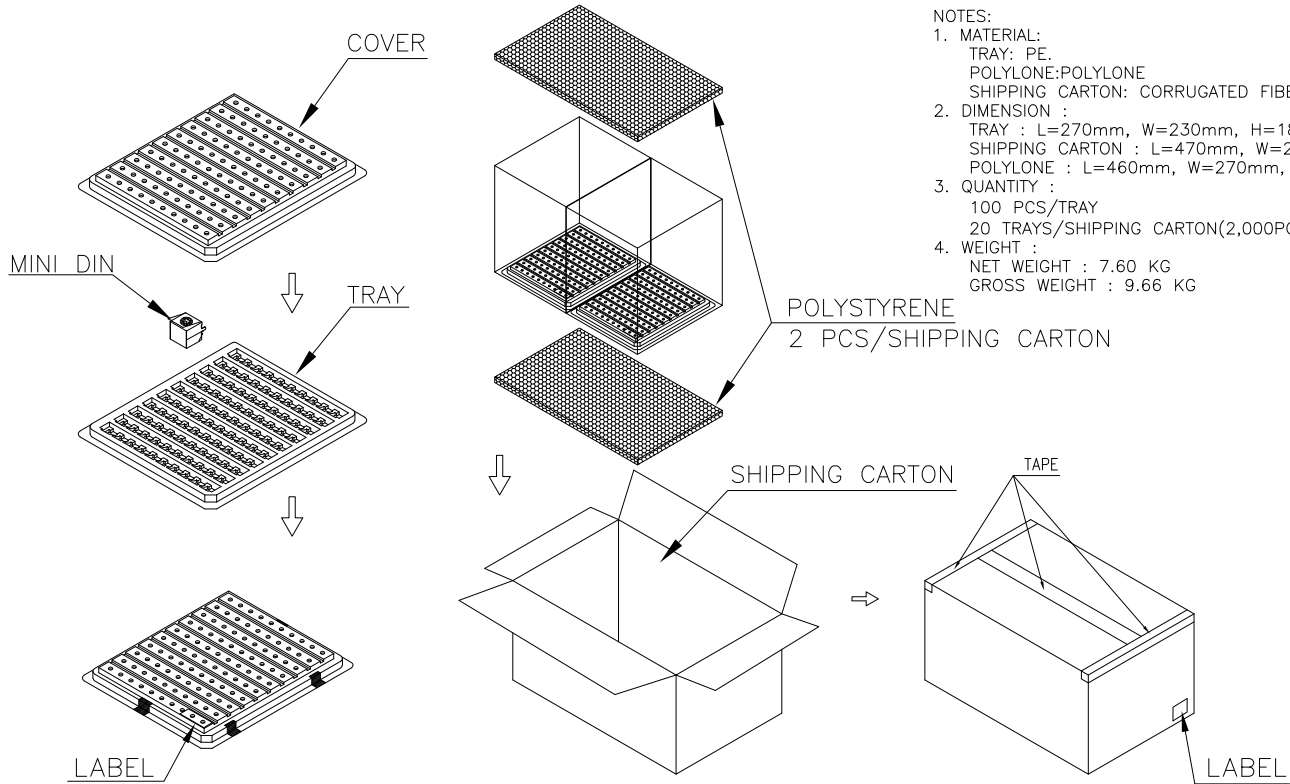
2

1

THIS DRAWING IS UNPUBLISHED. RELEASED FOR PUBLICATION
 © COPYRIGHT - BY - ALL RIGHTS RESERVED.

LOC	DIST	REVISIONS					
DW	-	P	LTR	DESCRIPTION	DATE	DWN	APVD
				SEE SHEET 1			

- NOTES:
- MATERIAL:
 TRAY: PE.
 POLYLONE: POLYLONE
 SHIPPING CARTON: CORRUGATED FIBER.
 - DIMENSION :
 TRAY : L=270mm, W=230mm, H=18.5mm
 SHIPPING CARTON : L=470mm, W=280mm, H=220mm
 POLYLONE : L=460mm, W=270mm, H=10mm
 - QUANTITY :
 100 PCS/TRAY
 20 TRAYS/SHIPPING CARTON(2,000PCS)
 - WEIGHT :
 NET WEIGHT : 7.60 KG
 GROSS WEIGHT : 9.66 KG



THIS DRAWING IS A CONTROLLED DOCUMENT.		DWN	STE TE Connectivity	
DIMENSIONS: MM		CHK		
TOLERANCES UNLESS OTHERWISE SPECIFIED:		APVD	NAME	
0 PLC ± -		PRODUCT SPEC	MINI DIN CONNECTOR, 4 POS, DIP TYPE	
1 PLC ± -		APPLICATION SPEC	SIZE	CAGE CODE
2 PLC ± -		WEIGHT	A3	00779
3 PLC ± -		CUSTOMER DRAWING	DRAWING NO	
4 PLC ± -		SCALE	C=1734752	
ANGLES ± -		SHEET	RESTRICTED TO	
FINISH		2 of 2	-	
		REV	A1	