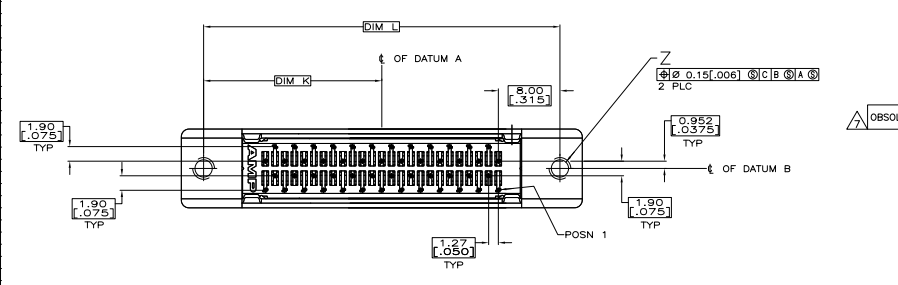
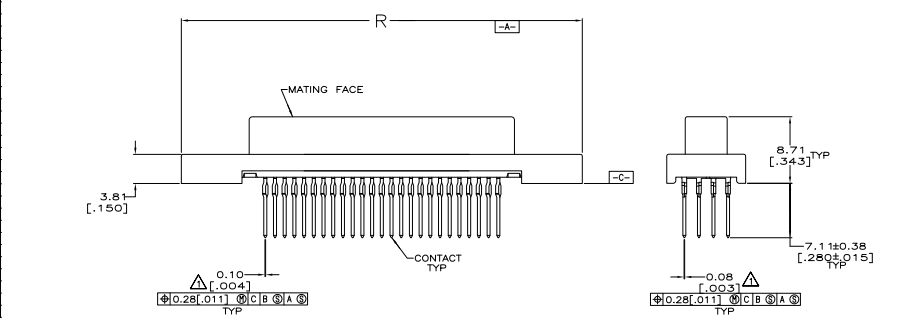
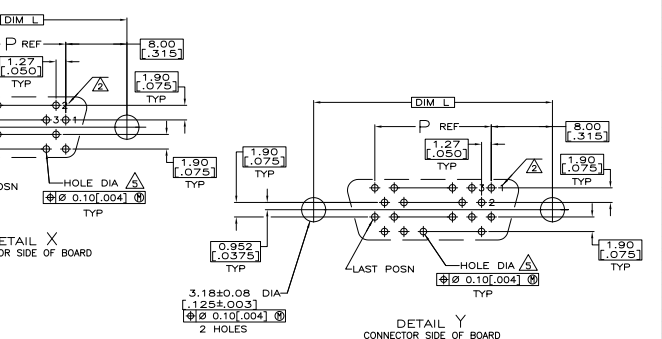
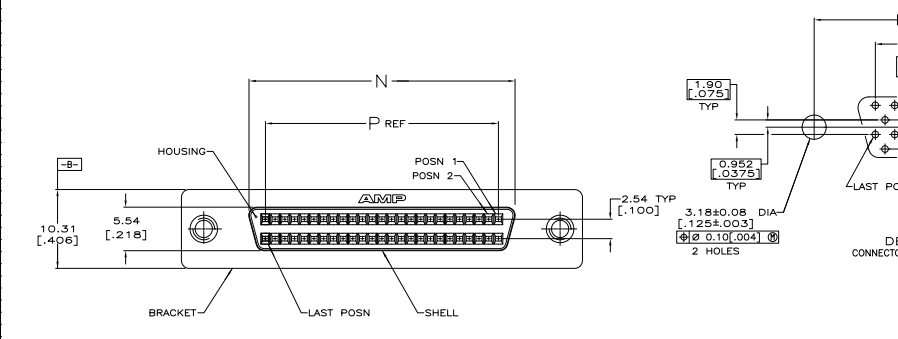


THIS DRAWING IS UNAPPROVED
 HELD FOR PROVISIONS
 © Copyright - © 1992 ELECTRONIC COMPONENTS ALL RIGHTS RESERVED

REV	GP	DATE	DESCRIPTION	BY	CHK
00					
M			REVISED PER ECO-08-012242	ZMR	SLB
M			REVISED PER ECO-11-000443	MMB	KJC



- △ POSITION TOLERANCE APPLIES AT CONTACT TIP.
- △ POSITION NUMBERS SHOWN FOR REFERENCE ONLY.
- △ MATERIAL:
 HOUSING - POLYPHTHALAMIDE, BLACK, UL 94-V0 RATED.
 SHELL - CARBON STEEL PER ASTM A109.
 CONTACTS - PHOSPHOR BRONZE PER QQ-B-750.
 BRACKET - ZINC
- △ FINISH:
 SHELL - 5.08µm [.000200] MIN NICKEL OVER 1.27µm [.000050] MIN COPPER.
 BRACKET - 3.81µm [.000150] MIN NICKEL OVER 5.08µm [.000200] MIN COPPER.
 CONTACTS - EITHER 0.76µm [.000030] MIN GOLD PLATE OR GOLD FLASH OVER PALLADIUM NICKEL PLATE, 0.76µm [.000030] MIN TOTAL, FOR A LENGTH OF 0.64 [.025] MIN, 0.13 [.005] MAX FROM MATING END, 1.27µm [.000050] MIN TIN-LEAD ON OPPOSITE END FOR A LENGTH OF 7.49 [.295] MIN, BOTH OVER 1.27µm [.000050] MIN NICKEL.
- △ PC BOARD HOLE RECOMMENDATIONS:
 A. HOLES SHOULD BE DRILLED WITH A 0.701 [.0276] DRILL.
 B. PC BOARD PLATING TO BE 7.62µm [.000300] MIN TIN-LEAD OVER 0.025-0.038 [.0010-.0015] COPPER.
 C. RECOMMENDED HOLE SIZE AFTER TIN-LEAD PLATING IS 0.56-0.66 [.022-.026].
- △ OBSOLETE PART NUMBER.
- △ OBSOLETE PARTS: OBSOLETE CIS STREAMLINING PER D.RENAUD/D.SINISI

PER DETAIL X	3.07 DIA	63.88	41.91	46.13	57.91	28.96	68	△ 1-786557-2
PER DETAIL X	3.07 DIA	[2.515]	[1.650]	[1.816]	[2.280]	[2.280]	68	1-786557-1
PER DETAIL X	4-40 UNC-2B	96.90	74.93	79.15	90.93	45.47	120	△ 1-786557-0
PER DETAIL X	4-40 UNC-2B	[3.815]	[2.950]	[3.116]	[3.580]	[1.790]	100	786557-9
PER DETAIL X	4-40 UNC-2B	84.20	62.23	66.45	78.23	39.12	68	786557-7
PER DETAIL X	4-40 UNC-2B	[2.515]	[1.650]	[1.816]	[2.280]	[1.140]	50	786557-5
PER DETAIL Y	4-40 UNC-2B	52.45	30.48	34.70	46.48	23.24	26	△ 786557-2
PER DETAIL Y	4-40 UNC-2B	37.21	15.24	19.46	31.24	15.62	20	△ 786557-1
PER DETAIL X	4-40 UNC-2B	33.40	11.43	15.65	27.43	13.72		
PER DETAIL X	4-40 UNC-2B	[1.465]	[.600]	[.786]	[1.230]	[.615]		
PER DETAIL X	4-40 UNC-2B	[1.315]	[.450]	[.616]	[1.080]	[.540]		
RECOMMENDED PCB MFG DIMENSIONS	Z	R	P	N	L	K	NO OF POSN	PART NUMBER

THIS DRAWING IS A CONTROLLED DOCUMENT. THE MOLD IS STONE 10-13-90

DATE: 108-12-28
 REV: 114-40029
 CUSTOMER DRAWING

RECEIPTABLE ASSEMBLY, SHIELDED, VERTICAL PLAT TOP, ACTION PIN FOR .125 TO .200 THICK BD.

DATE: 10779-786557
 FILE: 4.1
 SHEET: 1 OF 1

AP 485 80 318600