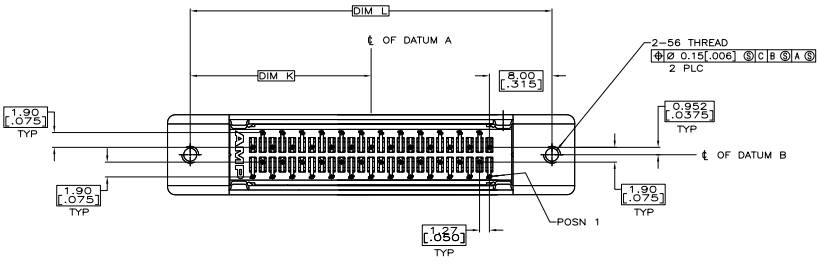
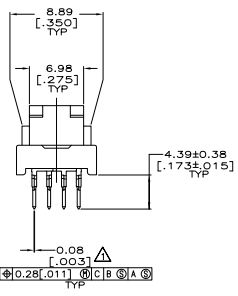
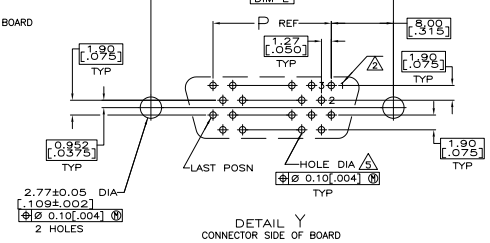
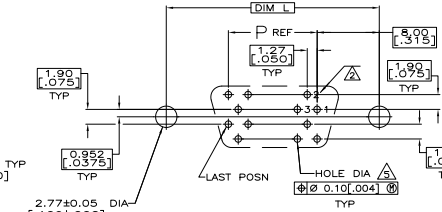
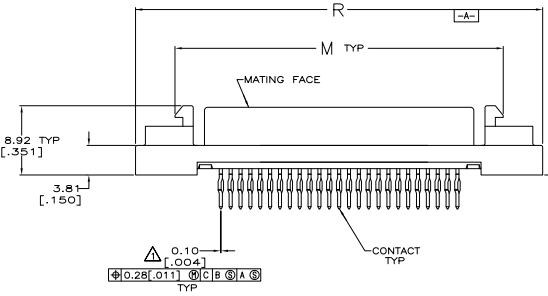
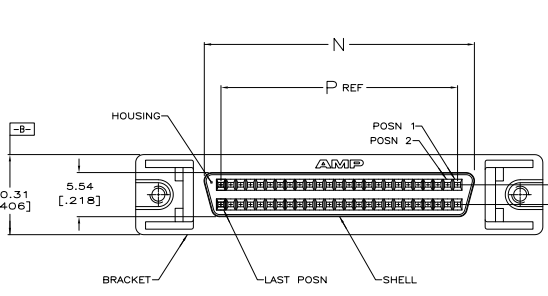


REV	DATE	DESCRIPTION	BY	CHK	APP
BD 95		REVISED PER EDD-11-004835			



- △ POSITION TOLERANCE APPLIES AT CONTACT TIP.
- △ POSITION NUMBERS SHOWN FOR REFERENCE ONLY.
- △ MATERIAL:  
 HOUSINGS - POLYPHTHALAMIDE, BLACK, UL 94-VO RATED.  
 CONTACTS - CARBON STEEL PER ASTM A109.  
 CONTACTS - PHOSPHOR BRONZE PER QQ-B-750.  
 BRACKET - ZINC
- △ FINISH:  
 SHELL - 5.08µm [.000200] MIN NICKEL OVER 1.27µm [.000050] MIN COPPER.  
 BRACKET - 3.81µm [.000150] MIN NICKEL OVER 5.08µm [.000200] MIN COPPER.  
 CONTACTS - EITHER 0.76µm [.000030] MIN GOLD PLATE OR GOLD FLASH OVER PALLADIUM NICKEL PLATE, 0.76µm [.000030] MIN TOTAL, FOR A LENGTH OF 0.64 [.025] MIN, 0.13 [.005] MAX FROM MATING END, 1.27µm [.000050] MIN TIN-LEAD ON OPPOSITE END FOR A LENGTH OF 4.78 [.188] MIN, BOTH OVER 1.27µm [.000050] MIN NICKEL.
- △ PC BOARD HOLE RECOMMENDATIONS:  
 A. HOLES SHOULD BE DRILLED WITH A 0.701 [.0276] DRILL.  
 B. PC BOARD PLATING TO BE 7.62µm [.000300] MIN TIN-LEAD OVER 0.025-0.038 [.0010-.0015] COPPER.  
 C. RECOMMENDED HOLE SIZE AFTER TIN-LEAD PLATING IS 0.56-0.66 [.022-.026].

	PER DETAIL X	74.93	79.15	86.74	90.93	45.47	120	1-786554-0
	[3.815]	[2.950]	[3.118]	[3.415]	[3.580]	[1.790]		
	84.20	62.23	66.46	74.04	78.23	39.12	100	786554-9
	[3.315]	[2.450]	[2.616]	[2.915]	[3.080]	[1.540]		
	63.88	41.91	46.13	53.72	57.91	28.96	68	786554-7
	[2.515]	[1.650]	[1.816]	[2.115]	[2.280]	[1.140]		
	62.45	30.48	34.70	42.29	46.48	23.24	50	786554-5
	[2.065]	[1.200]	[1.366]	[1.665]	[1.830]	[.915]		
	37.21	15.24	19.46	27.05	31.24	15.62	26	786554-2
	[1.465]	[.600]	[.766]	[1.065]	[1.230]	[.615]		
	33.40	11.43	15.65	23.24	27.43	13.72	20	786554-1
	[1.315]	[.450]	[.616]	[.915]	[1.080]	[.540]		
RECOMMENDED PCB MFG DIMENSIONS	R	P	N	M	L	K	NO OF POSN	

THIS DRAWING IS A CONTROLLED DOCUMENT. DATE: 10/17/03

TE Connectivity

RECEPTACLE ASSEMBLY, SHIELDED, VERTICAL, RAILED, ACTION PIN FOR 062 TO 093 THICK BO.

108-1228

114-40029

SIZE: 4.1

CUSTOMER DRAWING