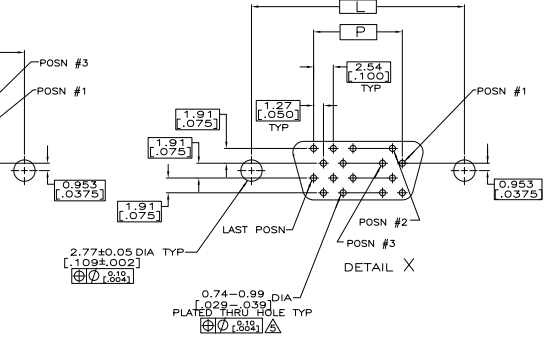
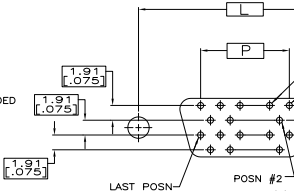
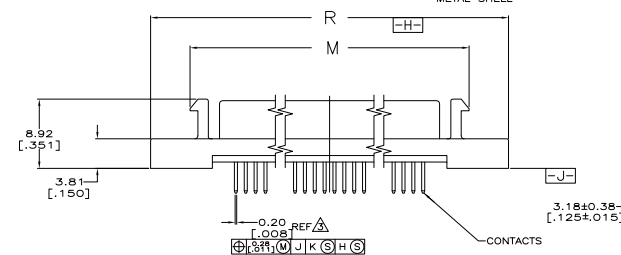
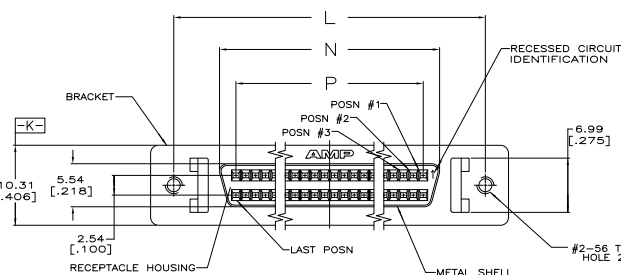
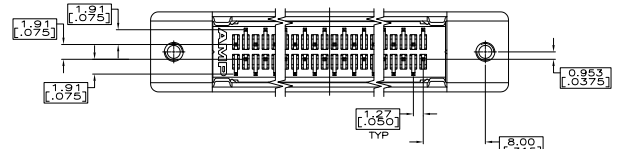


THIS DRAWING IS UNAPPROVED
 © 2008 SUTHERLAND

REV	DATE	DESCRIPTION	BY	CHK	APP
00					
P1		REVISED PER EDD-11-004835			



P.C. BOARD MOUNTING DIMENSIONS
 (CONNECTOR SIDE)



- △ FINISH
 CONTACTS: EITHER 0.76μm [.000030] MIN GOLD FOR A LENGTH OF 0.64 [.025] MIN, 0.13 [.005] MAX FROM MATING END OR GOLD FLASH OVER PALLADIUM NICKEL, 0.76μm [.000030] MIN TOTAL FOR A LENGTH OF 0.64 [.025] MIN, 0.13 [.005] MAX FROM MATING END. 3.81μm [.000150] MIN TIN-LEAD ON SOLDER POST, BOTH OVER 1.27μm [.000050] MIN NICKEL UNDERPLATE.
 SHELL: 5.08μm [.000200] MIN NICKEL OVER 1.27μm [.000050] MIN COPPER.
- △ FINISH
 CONTACTS: 1.27μm [.000050] MIN DURAGOLD FOR A LENGTH OF 0.64 [.025] MIN, 0.13 [.005] MAX FROM MATING END, 3.81μm [.000150] MIN TIN-LEAD ON SOLDER POST, BOTH OVER 1.27μm [.000050] MIN NICKEL.
 SHELL: 5.08μm [.000200] MIN NICKEL OVER 1.27μm [.000050] MIN COPPER.
- △ POSITION TOLERANCE APPLIES AT TIP ONLY.
- △ MATERIAL
 CONTACTS: PHOSPHOR BRONZE
 HOUSING: UL V-0 RATED THERMOPLASTIC COLOR BLACK
 BRACKET: ZINC
 SHELL: CARBON STEEL.
- △ ACTUAL HOLE SIZE USED WILL DEPEND ON TRACE ROUTING REQUIREMENTS BETWEEN HOLES AND CONNECTOR PLACEMENT TECHNIQUE.
- △ OBSOLETE PART NUMBER.

SUPERSEDED BY 749721-5		Y	52.45 [2.065]	30.48 [1.200]	34.70 [1.366]	42.29 [1.665]	46.48 [1.830]	△	50	△ 1-749721-1
X		96.90 [3.815]	74.93 [2.950]	79.15 [3.116]	86.74 [3.415]	90.93 [3.580]	△	120	△ 1-749721-0	
X		84.20 [3.315]	62.23 [2.450]	66.45 [2.616]	74.04 [2.915]	78.23 [3.080]	△	100	△ 749721-9	
X		71.50 [2.815]	49.53 [1.950]	53.75 [2.116]	61.34 [2.415]	65.53 [2.580]	△	80	△ 749721-8	
X		63.88 [2.515]	41.91 [1.650]	46.13 [1.816]	53.72 [2.115]	57.91 [2.280]	△	68	△ 749721-7	
X		58.80 [2.315]	36.83 [1.450]	41.05 [1.616]	48.64 [1.915]	52.83 [2.080]	△	60	△ 749721-6	
Y		52.45 [2.065]	30.48 [1.200]	34.70 [1.366]	42.29 [1.665]	46.48 [1.830]	△	50	△ 749721-5	
X		46.10 [1.815]	24.13 [.950]	28.34 [1.116]	35.94 [1.415]	40.13 [1.580]	△	40	△ 749721-4	
X		38.48 [1.515]	16.51 [.650]	20.73 [.816]	28.32 [1.115]	32.51 [1.280]	△	28	△ 749721-3	
Y		37.21 [1.465]	15.24 [.600]	19.46 [.766]	27.05 [1.065]	31.24 [1.230]	△	26	△ 749721-2	
X		33.40 [1.315]	11.43 [.450]	15.65 [.616]	23.24 [.915]	27.43 [1.080]	△	20	△ 749721-1	
PWB PATTERN		R	P	N	M	L	CONTACT FINISH	NO. OF POSN	PART NUMBER	

THIS DRAWING IS A CONTROLLED DOCUMENT. IN STOCK. DATE: 07-10-08

INVENTORY: M. LAVISELLI

REVISIONS: 1.0

DATE: 07-10-08

DESCRIPTION: RECEPTACLE ASSEMBLY, SHIELDED, VERTICAL, AMPHIMATE, 050 Series

SIZE: A1

DATE: 07-10-08

DESIGNER: SUTHERLAND

CUSTOMER DRAWING: 749721

SCALE: 4:1

SHEET: 1

TOTAL SHEETS: 1

DATE: 07-10-08

BY: SUTHERLAND

CHK: SUTHERLAND

APP: SUTHERLAND