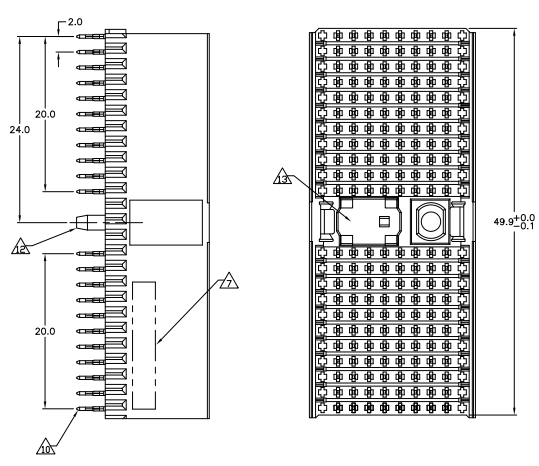


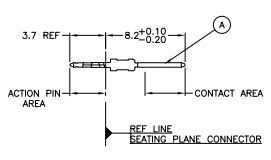
THIS DRAWING IS UNPUBLISHED. REVISIONS FOR PUBLICATION. ALL RIGHTS RESERVED.

REV	DATE	DESCRIPTION	BY	CHK
AD 00				
C		REV PER ECR-11-003871		

**CONNECTOR ASSEMBLY  
EXEMPLARY LOADED**

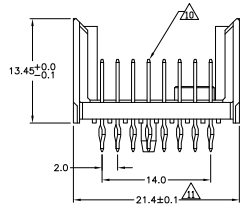


**CONTACT DIMENSIONS  
SCALE 5:1**



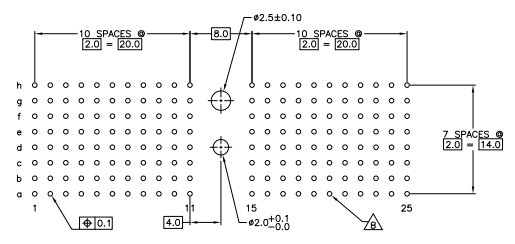
**CONTACT LAYOUT**

	z	a	b	c	d	e	f	g	h	i
1	A	A	A	A	A	A	A	A	A	A
2	A	A	A	A	A	A	A	A	A	A
3	A	A	A	A	A	A	A	A	A	A
4	A	A	A	A	A	A	A	A	A	A
5	A	A	A	A	A	A	A	A	A	A
6	A	A	A	A	A	A	A	A	A	A
7	A	A	A	A	A	A	A	A	A	A
8	A	A	A	A	A	A	A	A	A	A
9	A	A	A	A	A	A	A	A	A	A
10	A	A	A	A	A	A	A	A	A	A
11	A	A	A	A	A	A	A	A	A	A
MULTI PURPOSE CENTER										
15	A	A	A	A	A	A	A	A	A	A
16	A	A	A	A	A	A	A	A	A	A
17	A	A	A	A	A	A	A	A	A	A
18	A	A	A	A	A	A	A	A	A	A
19	A	A	A	A	A	A	A	A	A	A
20	A	A	A	A	A	A	A	A	A	A
21	A	A	A	A	A	A	A	A	A	A
22	A	A	A	A	A	A	A	A	A	A
23	A	A	A	A	A	A	A	A	A	A
24	A	A	A	A	A	A	A	A	A	A
25	A	A	A	A	A	A	A	A	A	A



**RECOMMENDED PCB-HOLE LAYOUT  
COMPONENT SIDE SHOWN**

**PLATED THRU HOLES PARAMETERS  
REFERENCE APPLICATION SPECIFICATION**



3-5646346-0
1-5646346-9
5646346-9
5646346-4
5646346-1
FINISH
PART NUMBER

THIS DRAWING IS A CONTROLLED DOCUMENT. IN CHARGE: STANLEY. Type Electronics Corporation, Harrisburg, Pa 17105-3608.

DESIGNED BY: G. SCHEPPEL. DRAWN BY: G. SCHEPPEL. DATE: 108-1622. REVISED BY: 114-19029. SIZE: ONE SIZE. QUANTITY: 100779. CUSTOMER DRAWING: G=5646346. PART: 4.1. REV: 1.2. C.

THIS DRAWING IS UNPUBLISHED. ALL RIGHTS RESERVED.  
 BY TYS ELECTRONICS CORPORATION

REVISONS		DATE	BY	APP
AD	00			

- △ MATERIAL:  
CONTACT: PHOSPHOR BRONZE.  
HOUSING: GLASS-FILLED POLYESTER.
- △ GENERAL PLATING SPECIFICATION: UNDERPLATING  
(ENTIRE CONTACT); 1.27µm MIN NICKEL AND ACTION  
PIN: 0.5µm MIN TIN.  
FOR PLATING OF MATING SURFACES SEE APPLICABLE  
SPECIFICATION REFERENCE FOR EACH DASH NUMBER.
- △ CONFORMS TO ALL TESTING ACCORDING TO IEC 61076-4-101  
PERFORMANCE LEVEL 2.
- △ CONFORMS TO ALL TESTING ACCORDING TO IEC 61076-4-101  
PERFORMANCE LEVEL 1.
- △ CONNECTOR TESTED AND QUALIFIED AGAINST TELCORDIA GR-1217-CORE QUALITY LEVEL 3,  
CENTRAL OFFICE APPLICATIONS.
- △ CONNECTOR TESTED AND QUALIFIED AGAINST TELCORDIA GR-1217-CORE QUALITY LEVEL 3,  
UNCONTROLLED ENVIRONMENT APPLICATIONS.
- △ CONNECTOR MARKED WITH PART NUMBER AND DATE CODE.  
ADDITIONAL CHARACTERS OR MARKINGS, AS WELL AS THE LOCATION OF THE MARKINGS,  
MAY BE ADDED FOR TRACEABILITY BASED UPON MANUFACTURERS DISCRETION.
- △ PLATED-THROUGH HOLES AT 2x2mm SQUARE GRID  
PATTERN DEFINED BY CONTACT LAYOUT.
- △ FOR ACTUAL PIN LOADING SEE "CONTACT LAYOUT".
- △ FOR ACTUAL PIN DIMENSIONS SEE "CONTACT DIMENSIONS".
- △ TO BE MEASURED AT BOTTOM OF SHROUD.
- △ POLARIZATION FEATURE.
- △ AREA RESERVED FOR KEYING PART (BASIC P/N 100525)
- △ CONNECTOR LUBRICATED WITH BELCORE APPROVED LUBRICANT,  
TECHNICAL REFERENCE: TR-NWT-001217 ISSUE 1, SEP 1992.
- △ OBSOLETE PARTS: OBSOLETE CIS STREAMLINING PER D.RENAUD/D.SINISI
- △ 0.76µm MIN GOLD PLATING ON MATING SURFACES

THIS DRAWING IS A CONTROLLED DOCUMENT.		IEC 61076-4-101	STANDARD	Tys Electronics Corporation Harrisburg, Pa 17105-3608	
DESIGNER	ENGINEER	DR	DR	DATE	REVISED
mm	mm	JG	JG	10B-1622	10B-1622
		10B-1622	10B-1622	114-19029	114-19029
SEE SHEET 1	SEE SHEET 1			A100779	G=5646346
				SIZE 4.1	SHEET 2 OF 2