

4

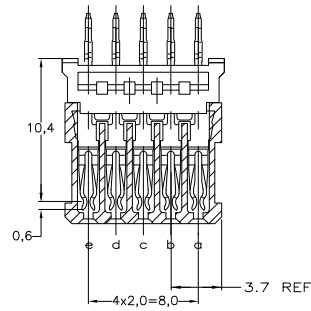
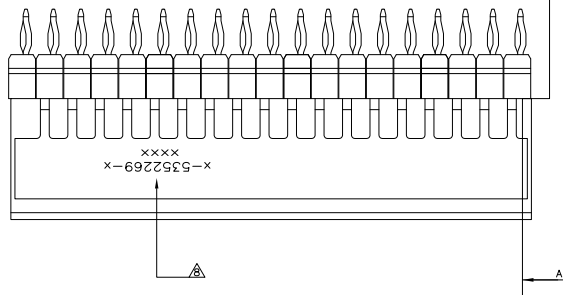
3

2

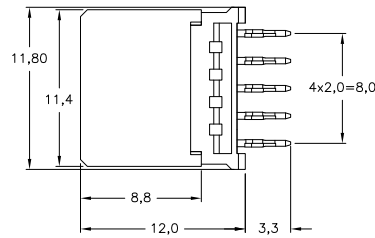
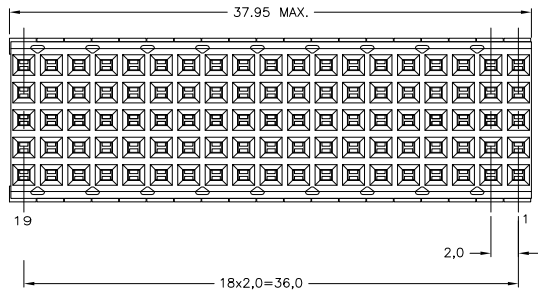
1

THIS DRAWING IS UNPUBLISHED. RELEASED FOR PUBLICATION. ALL RIGHTS RESERVED.

LOC	DIST	REVISIONS			
H	-	F	LR		
		D	RELEASED PER ECR ECR-11-00918	14MAY11	RC CW
		E	ECO-11-024491	13DEC11	SY MGW

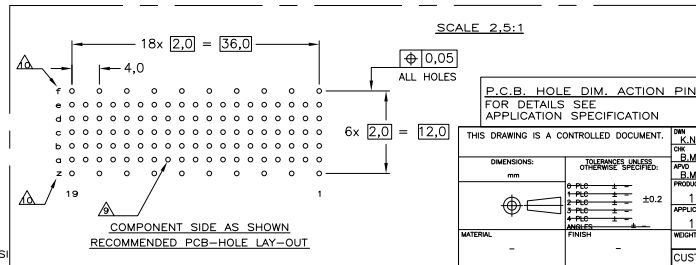


SECTION A-A



NOTES:

- △ MATERIAL CONTACT: PHOSPHORBRONZE
- △ MATERIAL HOUSING: GLASSFILLED POLYESTER UL-RATING 94VO (GRAY).
- △ GENERAL PLATING SPECIFICATION: UNDERPLATING (ENTIRE CONTACT): 1.27µm NICKEL MIN. AND ACTION PIN: 0.5µm TIN MIN. FOR PLATING OF MATING SURFACES SEE APPLICABLE SPECIFICATION REFERENCE FOR EACH DASH NUMBER.
- △ CONFORMS TO ALL TESTING ACCORDING IEC 61076-4-101 PERFORMANCE LEVEL 2.
- △ CONFORMS TO ALL TESTING ACCORDING IEC 61076-4-101 PERFORMANCE LEVEL 1.
- △ CONNECTOR TESTED AND QUALIFIED AGAINST TELCORDIA GR-1217-CORE QUALITY LEVEL III, CENTRAL OFFICE APPLICATIONS.
- △ CONNECTOR TESTED AND QUALIFIED AGAINST TELCORDIA GR-1217-CORE QUALITY LEVEL III, UNCONTROLLED ENVIRONMENT APPLICATIONS.
- △ CONNECTOR LUBRICATED WITH TELCORDIA GR-1217-CORE APPROVED LUBRICANT.
- △ CONNECTOR PRINTED WITH PARTNUMBER AND DATECODE.
- △ PLATED-THROUGH HOLES AT 2x2mm SQUARE GRID (95 HOLES).
- △ HOLES IN ROW f AND z FOR POSSIBLE FUTURE USE OF GROUND RETURN SHIELD. (SHIELDS NOT YET TOOLED)
- △ OBSOLETE PARTS: OBSOLETE CIS STREAMLINING PER D.RENAUD/D.SINISI



FINISH	MATERIAL	PARTNUMBER
△△△	△	△ 5352269-9
△△△	△	△ 5352269-9
△△△	△	△ 5352269-4
△△△	△	△ 5352269-1

THIS DRAWING IS A CONTROLLED DOCUMENT.		DRW: K.N.KIBAN 23AUG2004	CHK: B.MCOUL 27OCT2004
DIMENSIONS: mm		PRODUCT SPEC: 108-19082	APPLICATION SPEC: 114-19029
TOLERANCES UNLESS OTHERWISE SPECIFIED: ±0.2		WEIGHT: -	SIZE: A2
MATERIAL: FINISH		CUSTOMER DRAWING	SCALE: 5:1

TE Connectivity		Z-PACK 2mm HM TYPE B	
		95 POS. 19 COLUMNS VERTICAL FEMALE	
		CONNECTOR ASSEMBLY	
SIZE: A2	ONE CODE: 00779	DRAWING ID: C=5352269	RESTRICTED TO: -
SHEET 1 of 1		REV E	

1471-9 (3/11)

5352269

A