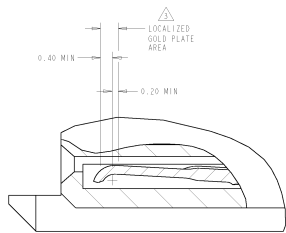
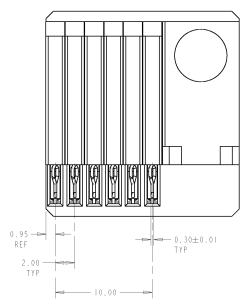
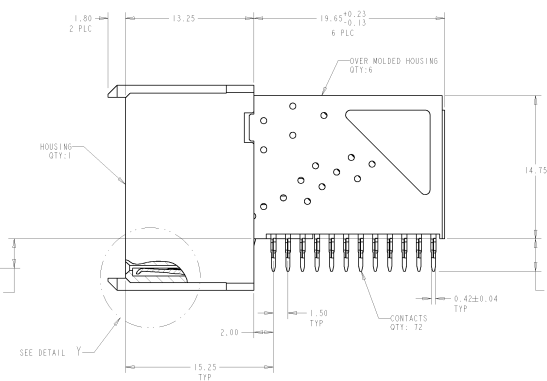
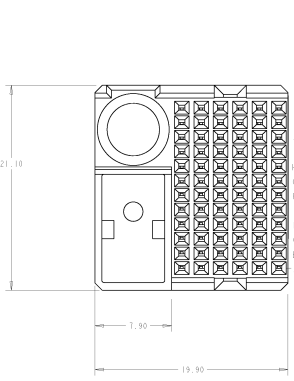
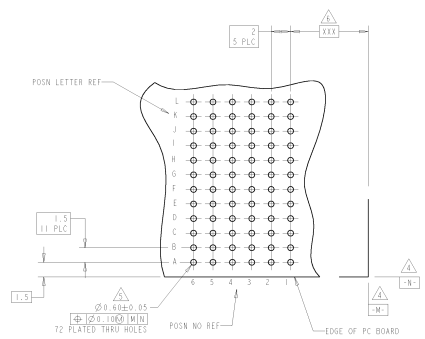
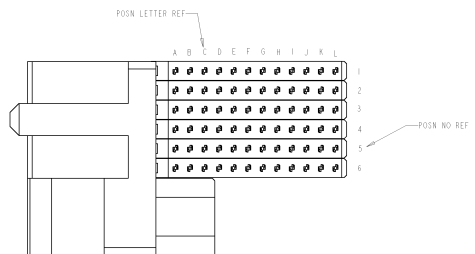


8	7	6	5	4	3	2	1
APPROVED FOR PRODUCTION		REVISIONS					
BY: [Signature]		REV	DATE	DESCRIPTION	BY	CHK	APP
		0		REV PER EC 0512-0319-04	BLUMBERG	BC	GS
		A		REV PER EC 0512-0302-05	BLUMBERG	BC	GS



DETAIL Y
SCALE: 15:1
TYPICAL



RECOMMENDED
PRINTED CIRCUIT BOARD
LAYOUT
RECOMMENDED PRINTED CIRCUIT BOARD
THICKNESS: 1.27
COMPONENT SIDE OF PRINTED CIRCUIT BOARD

- ▲ GLASS FILLED POLYESTER, BLACK
- ▲ PHOSPHOR BRONZE
- ▲ CONFORMS TO ALL TESTING ACCORDING TO IEC 61076-4-101 PERFORMANCE LEVEL: 2
- ▲ DATUMS ESTABLISHED BY CUSTOMER.
- ▲ DRILLED HOLE DIAMETER: 0.70±0.025
COPPER THK: 0.025-0.05
TIN THICKNESS: 0.004-0.01
- ▲ DIMENSION ESTABLISHED BY CUSTOMER.
- ▲ GENERAL PLATING SPECIFICATION: UNDERPLATING
VENTING CONTACTS: 1.25µm MIN NICKEL AND ACTION
PIN: 0.5µm MIN TIN
ROG PLATING OF MATING SURFACES SEE APPLICABLE SPECIFICATION REFERENCE FOR EACH DASH NUMBER.

5120640-1
PART NUMBER

MANUFACTURER: Tyco Electronics PART NUMBER: 5120640-1 DESCRIPTION: RECEPTACLE ASSEMBLY, SIGNAL/GROUND COMBINATION, 72 POSITION, LEFT HAND, 2-PAK, 12 HW		DATE: 05/12/05 REV: 05/12/05
MATERIAL: PHOSPHOR BRONZE FINISH: TIN CONTACTS: 72	DRAWING: CUSTOMER DRAWING SCALE: 1:1	PART NUMBER: 5120640-1 REV: 05/12/05