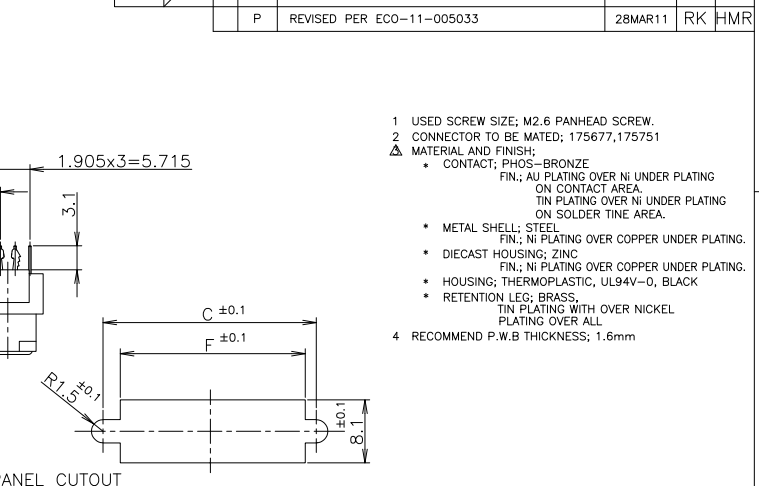
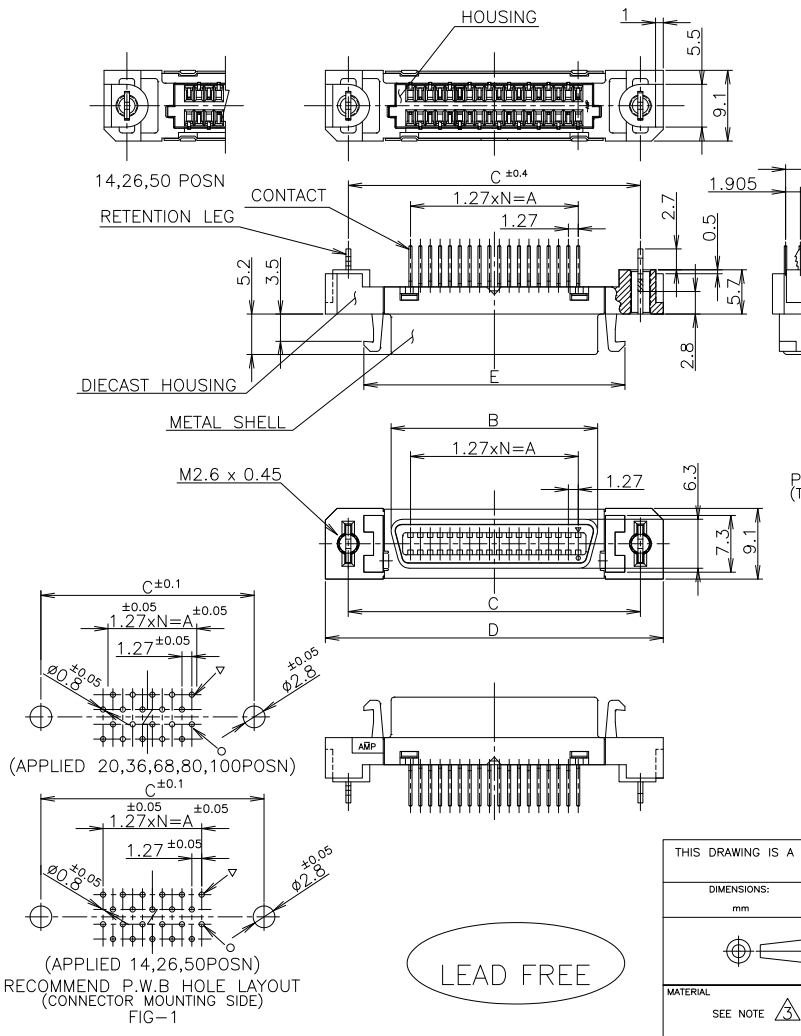


THIS DRAWING IS UNPUBLISHED. RELEASED FOR PUBLICATION SEP. 2004. ALL RIGHTS RESERVED. COPYRIGHT 2004 By -

LOC	DIST	REVISIONS			
P	LTR	DESCRIPTION	DATE	DWN	APVD
		REVISED PER ECO-11-005033	28MAR11	RK	HMR



- USED SCREW SIZE; M2.6 PAN-HEAD SCREW.
- CONNECTOR TO BE MATED; 175677,175751
- MATERIAL AND FINISH:
 - * CONTACT; PHOS-BRONZE
FIN.; NI PLATING OVER NI UNDER PLATING ON CONTACT AREA.
TIN PLATING OVER NI UNDER PLATING ON SOLDER TINE AREA.
 - * METAL SHELL; STEEL
FIN.; NI PLATING OVER COPPER UNDER PLATING.
 - * DIECAST HOUSING; ZINC
FIN.; NI PLATING OVER COPPER UNDER PLATING.
 - * HOUSING; THERMOPLASTIC, UL94V-0, BLACK
 - * RETENTION LEG; BRASS,
TIN PLATING WITH OVER NICKEL
PLATING OVER ALL
- RECOMMEND P.W.B THICKNESS; 1.6mm

GOLD PLATING	N	F	E	D	C	B	A	POSN	PART NO.
	49	74.60	74.25	84.15	78.25	67.23	62.23	100	2-5917334-9
	33	54.20	53.93	63.83	57.93	46.91	41.91	68	2-5917334-8
	24	42.80	42.50	52.40	46.50	35.48	30.48	50	2-5917334-7
	17	33.90	33.61	43.51	37.61	26.59	21.59	36	2-5917334-5
	12	27.60	27.26	37.16	31.26	20.24	15.24	26	2-5917334-4
	9	23.80	23.45	33.35	27.45	16.43	11.43	20	2-5917334-2
	6	19.90	19.64	29.54	23.64	12.62	7.62	14	2-5917334-1
0.0003	39	61.90	61.55	71.45	65.55	54.53	49.53	80	1-5917334-0
	49	74.60	74.25	84.15	78.25	67.23	62.23	100	5917334-9
	33	54.20	53.93	63.83	57.93	46.91	41.91	68	5917334-8
	24	42.80	42.50	52.40	46.50	35.48	30.48	50	5917334-7
	17	33.90	33.61	43.51	37.61	26.59	21.59	36	5917334-5
	12	27.60	27.26	37.16	31.26	20.24	15.24	26	5917334-4
	9	23.80	23.45	33.35	27.45	16.43	11.43	20	5917334-2
	6	19.90	19.64	29.54	23.64	12.62	7.62	14	5917334-1

RECOMMEND P.W.B HOLE LAYOUT (CONNECTOR MOUNTING SIDE) FIG-1

LEAD FREE

THIS DRAWING IS A CONTROLLED DOCUMENT.

DIMENSIONS: mm	TOLERANCES UNLESS OTHERWISE SPECIFIED:	DWN: COREL WANG	01SEP04
	0 PLC ± 0.2	CHK: STEVEN YAO	01SEP04
	1 PLC ± 0.2	APVD: I. ENOMOTO	01SEP04
	2 PLC ± 0.2	NAME: _____	
	3 PLC ± 0.2	PRODUCT SPEC: _____	
	4 PLC ± 0.2	APPLICATION SPEC: _____	
	ANGLES ± 5°	108-5288	
MATERIAL: SEE NOTE 3	FINISH: SEE NOTE 3	SIZE: A3	CAGE CODE: 00779
		WEIGHT: _____	DRAWING NO: C-5917334
		CUSTOMER DRAWING	SCALE: 2:1
			SHEET: 1 of 1
			REV: P

STE TE Connectivity
REC HEADER ASSY, VERTICAL
W/RETENTION LEG
CHAMP .050 SERIES (II) STD-TYPE (M2.6)