



308 Constitution Drive
Menlo Park, CA 94025-1164
Phone: 800-227-4856
www.circuitprotection.com

PolySwitch®
PTC Devices
Overcurrent Protection Device

Raychem Circuit Protection Products

PRODUCT: miniSMDC300F

DOCUMENT: SCD 27775
REV LETTER: B1
REV DATE: 15-Apr-11
PAGE NO.: 1 OF 1

Specification Status: Released

Maximum Electrical Rating

Voltage: 6V_{DC}
Short Circuit Current: 100A

Notes:

1. All terminations are tin plated.
2. Drawing not to scale

Marking:

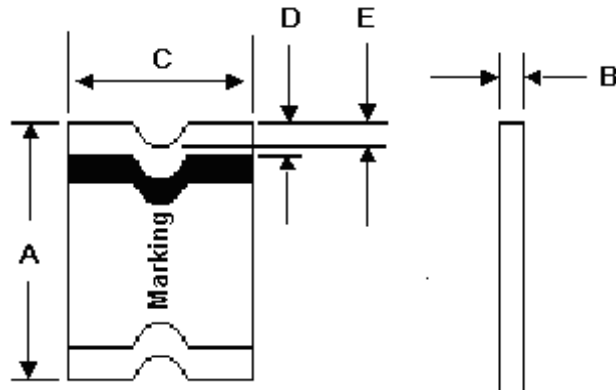
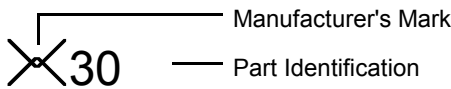


TABLE I. DIMENSIONS:

	A		B		C		D		E
	MIN	MAX	MIN	MAX	MIN	MAX	MIN	MAX	MIN
mm:	4.37	4.73	0.45	0.76	3.07	3.41	0.25	0.95	0.20
in:	(0.172)	(0.186)	(0.018)	(0.030)	(0.121)	(0.134)	(0.010)	(0.040)	(0.008)

TABLE II. PERFORMANCE RATINGS:

CURRENT RATINGS**						TIME TO TRIP**	RESISTANCE VALUES		TRIPPED-STATE POWER DISSIPATION**
AMPERES AT 0°C		AMPERES AT 25°C		AMPERES AT 60°C		SECONDS AT 25°C, 8A MAX	OHMS AT 25°C		WATTS AT 25°C, 6V MAX
HOLD	TRIP	HOLD	TRIP	HOLD	TRIP		MIN	MAX*	
3.30	7.00	3.00	6.00	2.35	4.56	5	0.011	0.036	1.00

* Maximum resistance is measured 1 hour after reflow

** Values Specified were determined using PCB's with 0.040"X2 ounce copper traces.

Agency Recognition: UL, CSA
Reference Documents: PS300
Precedence: This specification takes precedence over documents referenced herein.
Effectivity: Reference documents shall be the issue in effect on the date of invitation for bid.
CAUTION: Operation beyond the rated voltage or current may result in rupture, electrical arcing or flame.

Materials Information

ROHS Compliant

Directive 2002/95/EC
Compliant

ELV Compliant

Directive 2000/53/EC
Compliant

Pb-Free



Halogen Free*



* Halogen Free refers to: Br≤900ppm, Cl≤900ppm, Br+Cl≤1500ppm

© 2009, 2011 Tyco Electronics Corporation, a TE Connectivity Ltd. Company. All Rights Reserved.