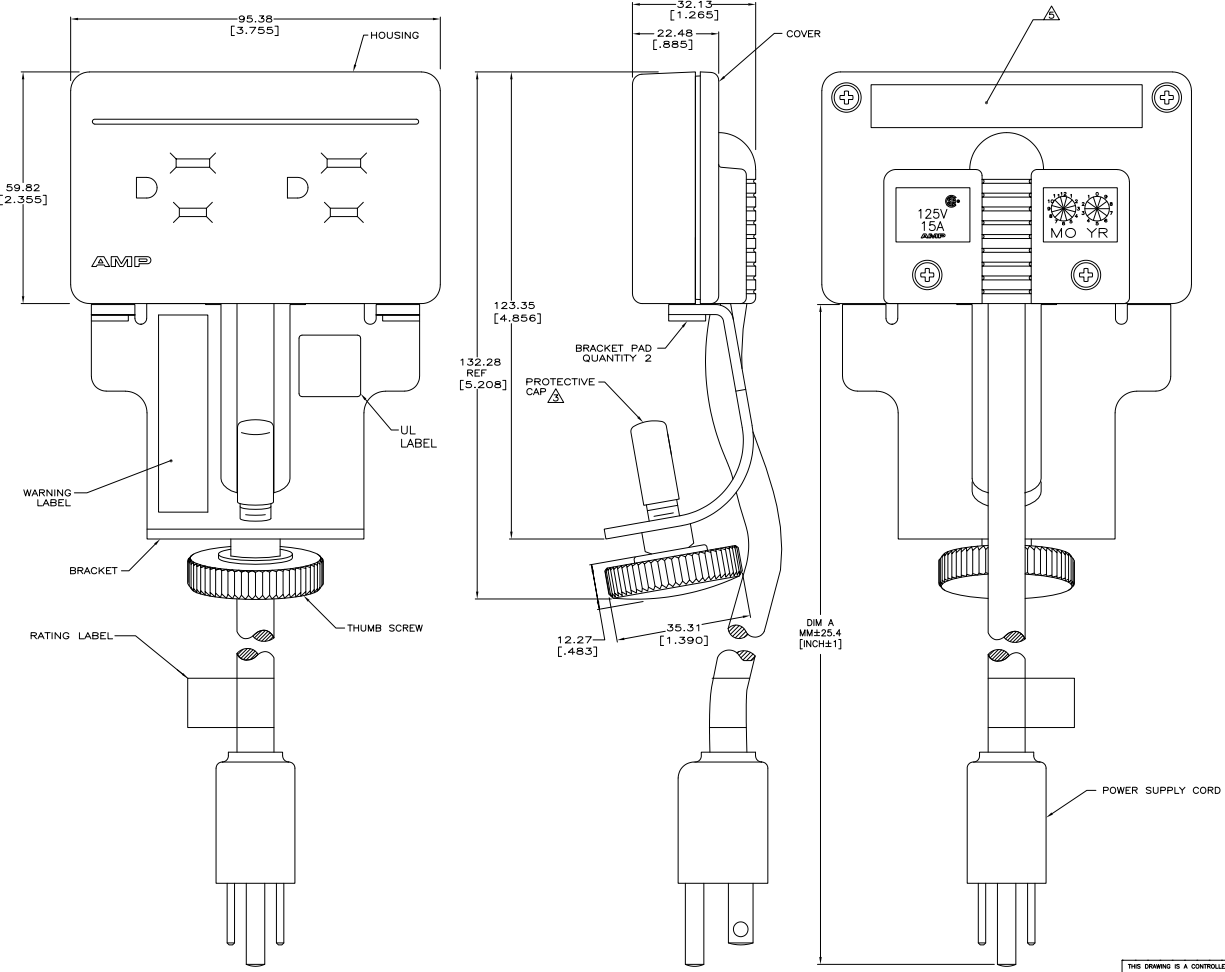


REV	DATE	DESCRIPTION	BY	CHKD
J	REV-EC 0840-0192-04		08AAL2004	LH LS
K	REV ADD 1/1.1/3/ECCO-08-030401		08DEC008	LH FL
L	REV ECO-09-019614		27AUG009	LH SJ
M	REV ECO-11-001929		31JAN11	JB SJ



- ⚠ MATERIAL: HOUSING AND COVER – POLYCARBONATE MOLDING COMPOUND, 94V-0 RATED. SEE TABLE FOR COLOR.
 BRACKET – BLACK OXIDE COATED CARBON STEEL.
 THUMB SCREW – STEEL WITH A BLACK MOLDED KNOB.
 PROTECTIVE CAP – VINYL, BLACK.
 CONTACTS – COPPER ALLOY, TIN PLATED.
 BRACKET PAD – ADHESIVE BACKED RUBBER, BLACK.
- 2. DUPLEX IS RATED 125V, 15A.
- ⚠ REMOVAL OF PROTECTIVE CAP BEFORE INSTALLATION IS OPTIONAL.
- 4. ALL DIMENSIONS ARE MAXIMUM UNLESS OTHERWISE SPECIFIED.
- ⚠ THE PART NUMBER SHALL BE INK STAMPED ON BACK OF COVER WHERE INDICATED. SEE TABLE FOR PART NUMBER.
- 6. DIMENSIONS SHOWN IN BRACKETS [] ARE IN INCHES.

THIS DRAWING IS A CONTROLLED DOCUMENT.		REV	DATE	DESCRIPTION	BY	CHKD
7620	300	BLACK	1-556222-3			
2565	101	BLACK	556222-3			
DIM A (MM)	DIM A (INCHES)	COLOR	PART NUMBER			
TTI Electronics Corporation Harrisburg, Pa 17105-3608 DESK TOP DUPLEX MONUMENT SEE DATE SIZE DRAWING NO. RESTRICTED TO A1 00779 G=556222 CUSTOMER DRAWING SIZE: 2:1 SHEET 1 OF 1						