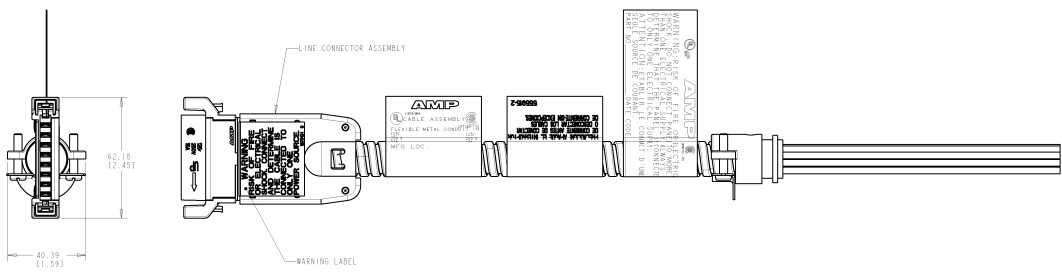
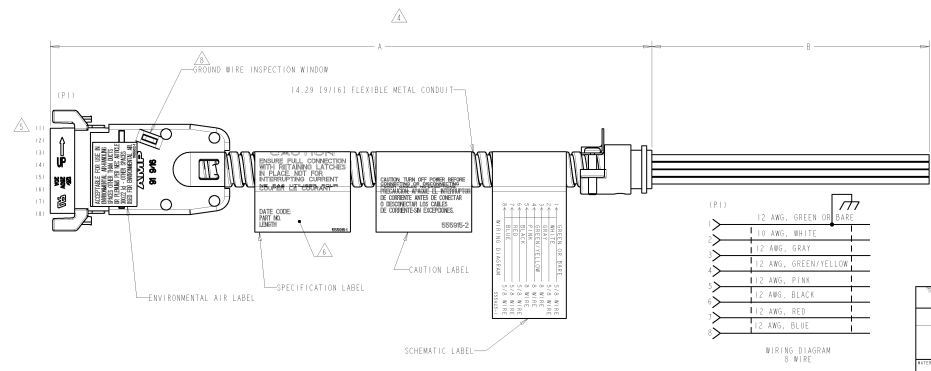
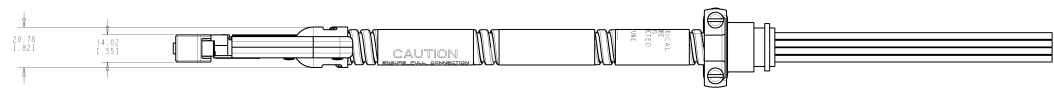


REV	DATE	DESCRIPTION	BY	CHKD	APP'D
00					
1	04-08-2020		000000	JM	FL
2	05-01-2020		000000	GO	SJ
3	05-13-2020		000000	EH	SJ



- △ ALL DIMENSIONS SHOWN ARE MAXIMUM UNLESS OTHERWISE SPECIFIED.
- 2. CABLE ASSEMBLY SHALL BE WIRED PER WIRING DIAGRAM.
- △ MATERIAL:
 CONNECTOR HOUSINGS- POLYCARBONATE, 94V-0, BLACK
 STRAIN RELIEFS- CARBON STEEL WITH NICKEL PLATING 5.08µm (0.000200) MINIMUM THICK
 CONTACTS- COPPER ALLOY WITH SILVER PLATED STRIP 3.81µm (0.000150) MINIMUM THICK
- △ DIMENSION A SHALL BE MEASURED WITH CONDUIT IN THE RELAXED POSITION.
- △ DESIGNATIONS IN PARENTHESES () ARE FOR REFERENCE ONLY.
- △ MANUFACTURING LOCATION, DATE CODE, PART NUMBER AND LENGTH SHALL BE INK STAMPED WHERE INDICATED.
- 7. APPLICATION: AMPINERGY - MODULAR POWER DISTRIBUTION SYSTEM, A MANUFACTURED WIRING SYSTEM.
- △ USE GROUND WIRE INSPECTION WINDOW TO VERIFY BONDING AND GROUNDING CONDUCTOR.



QTY	DESCRIPTION	UNIT	QTY
3-556148-1		15.24 (0.60)	
3-556148-2		12.19 (0.48)	
3-556148-3		9.14 (0.36)	
2-556148-5		7.62 (0.30)	
2-556148-0		6.10 (0.24)	
1-556148-5		4.57 (0.18)	
1-556148-0		3.05 (0.12)	
556148-5		1.52 (0.06)	
556148-4		1.27 (0.05)	
556148-3		0.91 (0.04)	
556148-2		0.41 (0.02)	
556148-1		0.30 (0.01)	

PART NO. 100-1234 REV. 00 DATE 04-08-2020	PROJECT NO. 100-1234 PROJECT TITLE: CABLE ASSEMBLY, LINE ENTRY, 8 WIRE MANUFACTURED BY: AMPINERGY	CUSTOMER DRAWING: 100-1234-0000 DATE: 04-08-2020 PART NO.: 100-1234-0000	TITLE: CABLE ASSEMBLY, LINE ENTRY, 8 WIRE PART NO.: 100-1234-0000 DATE: 04-08-2020
---	---	--	--