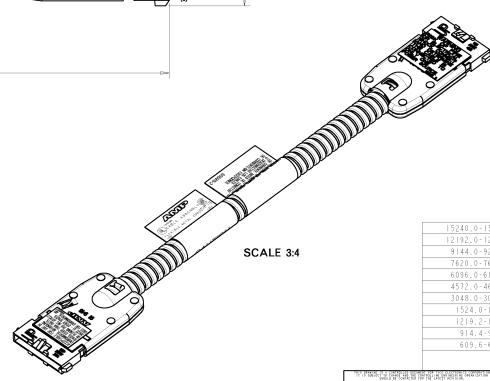
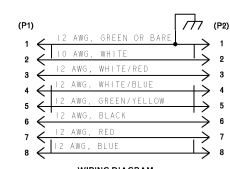
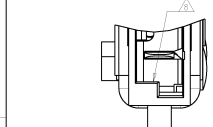
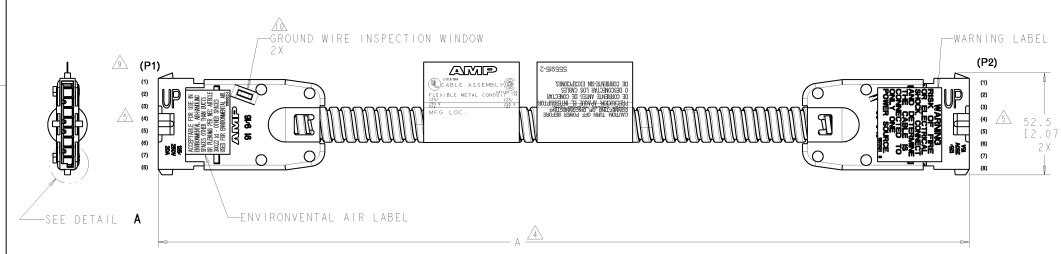
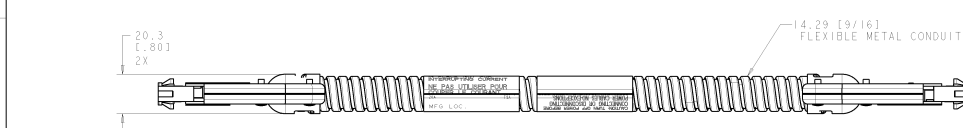
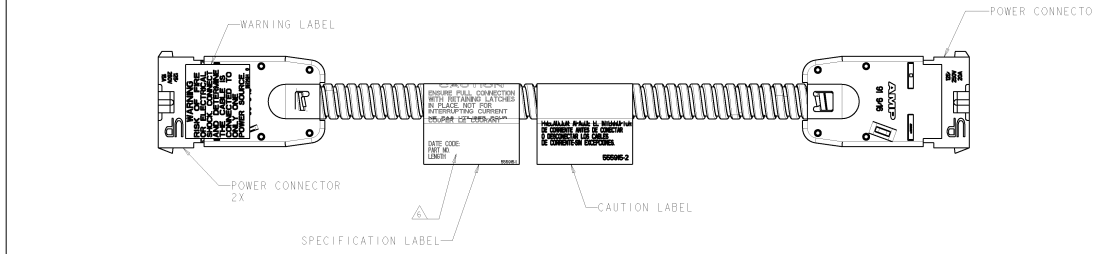


8	7	6	5	4	3	2	1
DATE MARKED TO SPECIFICATION	REVISED FOR SPECIFICATION						
REV. 001	REV. 002						

REV	DATE	DESCRIPTION	BY	CHK	APPV
A	0007-002				
B	REV ECU-09-001485				
C	REV. ECU-09-013048				



- △ DIMENSIONS SHOWN ARE NOMINAL UNLESS OTHERWISE SPECIFIED.
- 2. CABLE ASSEMBLY IS WIRED PER WIRING DIAGRAM.
- △ MATERIAL:
- CONNECTOR HOUSINGS- POLYCARBONATE, UL 94V-0 RATED, NEMA GRAY.
- STRAIN RELIEFS- CARBON STEEL WITH NICKEL PLATING 3.08µm (1.000200) MINIMUM THICK.
- CONTACTS- COPPER ALLOY WITH SILVER PLATED STRIP 3.81µm (1.000150) MINIMUM THICK.
- △ DIMENSION A SHALL BE MEASURED WITH CONDUIT IN THE RELAXED POSITION.
- △ DESIGNATIONS IN PARENTHESES () ARE FOR REFERENCE ONLY.
- △ MANUFACTURING LOCATION, DATE CODE, PART NUMBER AND LENGTH SHALL BE INK STAMPED APPROXIMATELY WHERE INDICATED
- 7. APPLICATION: AMP IN ENERGY (TM) - MODULAR POWER DISTRIBUTION SYSTEM, A MANUFACTURED WIRING SYSTEM.
- △ CABLE CONNECTOR MATES WITH DEDICATED NEUTRAL (3-3-2) LINE CONNECTOR CABLE ASSEMBLIES, JUNCTION BOXES, POWER STRIPS, ZONE DISTRIBUTION BOXES (ZDB) AND POWER DISTRIBUTION MODULES (PDM). KEYING FEATURE MAINTAINS CORRECT POLARITY OF MATING LINE CONNECTORS.
- △ TABS FOR POSITIVE LATCHING TO MATING COMPONENTS.
- △ USE GROUND WIRE INSPECTION WINDOW TO VERIFY BONDING AND GROUNDING CONDUCTOR.

15240-0-15316-2 (400.00-603.00)	5-1933400-0	15.24 (50.00)
12192-0-12268-2 (480.00-483.00)	4-1933400-0	12.19 (40.00)
9444-0-9229-2 (180.00-363.00)	2-1933400-0	9.44 (30.00)
7620-0-7696-2 (180.00-383.00)	2-1933400-5	7.62 (25.00)
6996-0-6146-8 (240.00-242.00)	2-1933400-0	6.10 (20.00)
4572-0-4622-0 (180.00-182.00)	1-1933400-5	4.57 (15.00)
3946-0-3975-4 (120.00-121.00)	1-1933400-0	3.95 (10.00)
1524-0-1543-0 (40.00-60.75)	1933400-5	1.52 (5.00)
1219-2-1231-0 (48.00-48.50)	1933400-4	1.22 (4.00)
914-0-927-1 (36.00-36.50)	1933400-3	0.91 (3.00)
609-0-622-3 (24.00-24.50)	1933400-2	0.61 (2.00)

DESCRIPTION	REV. (INCHES)	REV. (MILLIMETERS)	DATE	BY	CHK	APPV
CABLE ASSEMBLY, POWER TO POWER 3-3-2						
MATERIAL	REV. (INCHES)	REV. (MILLIMETERS)	DATE	BY	CHK	APPV