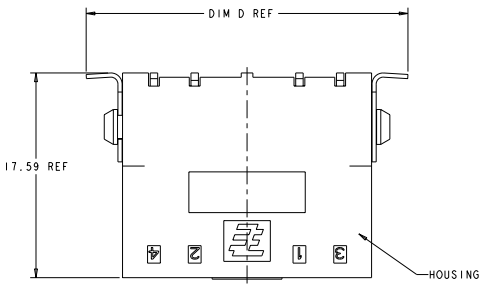
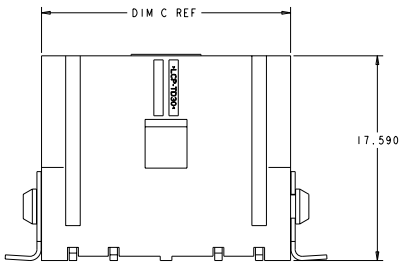
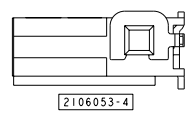
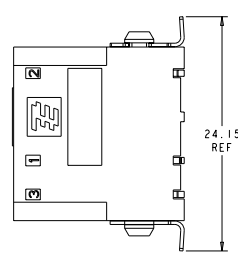
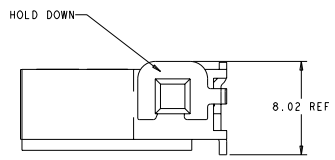
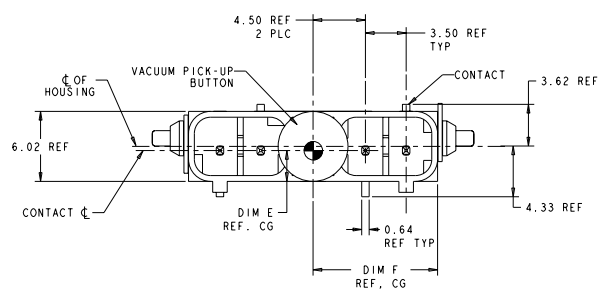
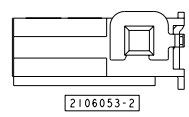
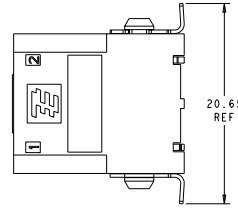


REV	DATE	DESCRIPTION	BY	CHK	APP
A1	01/20/2009	REVISED PER ECO-11-004820	DMH0011	BA	HRH
A2	01/20/2009	REVISED PER ECO-12-003180	ZP00012	MVG	DD



- △ MATERIAL: HOUSING: LCP, COLOR: BLACK.
- △ CONTACTS: BRASS.
FINISH: 2.54µm MIN MATTE TIN OVER NICKEL (ENTIRE POST).
HOLD-DOWN: COPPER ALLOY.
FINISH: 2.54µm MIN MATTE TIN OVER NICKEL.
- △ VACUUM PICK-UP BUTTON: POLYIMIDE.
- 4. THIS PRODUCT HAS NOT COMPLETED VALIDATION TESTING.
- △ RECOMMENDED PC BOARD THICKNESS OF 1.57.
- 6. TAPE AND REEL PACKAGING PER EIA-481 SPEC.
- 7. MUST COMPLY WITH DIRECTIVE 2002/95/EC (ROHS).



10.69	2.94	27.65	21.40	12.46	12.46	4	2106053-6
8.95	2.95	24.15	17.90	8.96	12.46	3	2106053-4
7.19	2.93	20.65	14.40	8.96	8.96	2	2106053-2
DIM F	DIM E	DIM D	DIM C	DIM B	DIM A	POSN	PART NUMBER

THIS DRAWING IS A CONTROLLED DOCUMENT. DATE: 01/20/2009

DESIGNED BY: J. BUCHER DATE: 01/20/2009

DRAWN BY: J. BUCHER DATE: 01/20/2009

REVISED BY: DATE: 01/20/2009

APPROVED BY: DATE: 01/20/2009

DATE: 01/20/2009

STATE: CAE CODE: DRAWING NO: 00779

REVISION: A

PROJECT: 2106053

CUSTOMER DRAWING

TE Connectivity

ASSEMBLY, VERTICAL SMT HEADER, SLIMSEAL SSL CONNECTOR

REVISIONS FOR PUBLICATION

DATE: 01/20/2009

BY: DMH0011

CHK: BA

APP: HRH

DATE: 01/20/2009

BY: ZP00012

CHK: MVG

APP: DD

