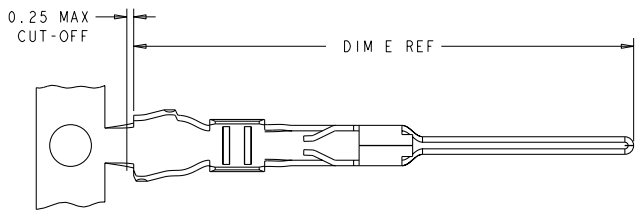
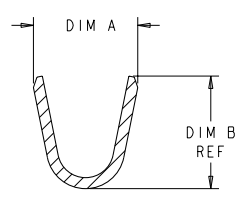
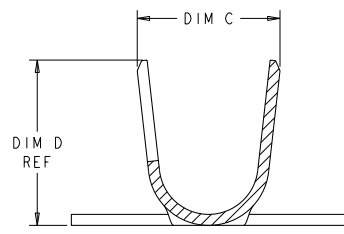
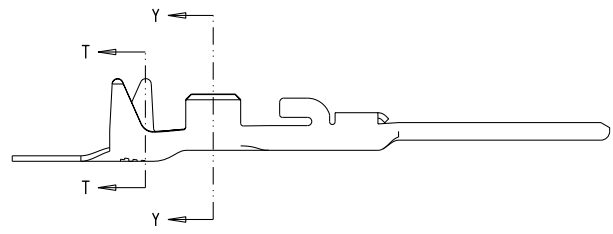


REVISIONS				
P	LY	DESCRIPTION	DATE	BY
A3		REVISED PER ECO-11-004820	11MAR2011	RK HMD
A4		REVISED PER ECR-11-014651	26JUL2011	RK DD
A5		REVISED PER ECR-11-016987	5SEP2011	RS DD

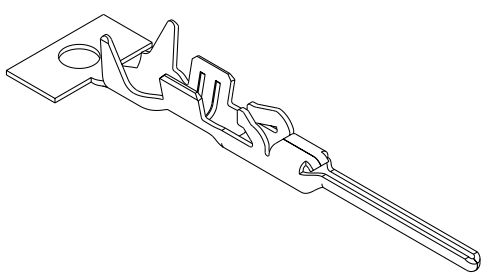
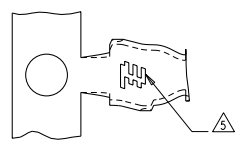


- △ BRASS, 0.20 THK. REF
- △ NICKEL UNDERPLATE OVER ALL
- △ 0.00254 MIN THK BRIGHT TIN ENTIRE CONTACT OVER NICKEL UNDERPLATE
- △ 0.00038 THK GOLD STRIPE
- △ TE CONNECTIVITY LOGO LOCATED APPROXIMATELY AS SHOWN
- △ 0.000762 THK GOLD STRIPE



SECTION T-T
SCALE 20:1

SECTION Y-Y
SCALE 20:1



18.24	2.40	2.60 2.20	1.55	1.96 1.57	1.30 - 1.60	22-24 AWG	ON REEL	△	3-2106124-3
18.24	2.40	2.60 2.20	1.55	1.96 1.57	1.30 - 1.60	22-24 AWG	LOOSE PIECE	△ △	2-2106124-7
18.24	2.40	2.60 2.20	1.55	1.96 1.57	1.30 - 1.60	22-24 AWG	ON REEL	△ △ △	2-2106124-3
18.24	2.40	2.60 2.20	1.55	1.96 1.57	1.30 - 1.60	22-24 AWG	ON REEL	△ △	2-2106124-2
18.24	3.01	2.80 2.40	2.05	2.32 1.92	1.70 - 2.10	18-20 AWG	LOOSE PIECE	△ △	2106124-9
18.24	3.01	2.80 2.40	2.05	2.32 1.92	1.70 - 2.10	18-20 AWG	ON REEL	△ △ △	2106124-3
18.24	3.01	2.80 2.40	2.05	2.32 1.92	1.70 - 2.10	18-20 AWG	ON REEL	△ △	2106124-2

THIS DRAWING IS A CONTROLLED DOCUMENT. **OSMAR2009**

DESIGNED BY: **R. BROWN** / CHECKED BY: **A. BUCHER**

TE Connectivity
CONTACT, TAB, CRIMP SNAP-IN
SLIM SEAL SSL

PRODUCT SPEC: 108-2391
APPLICATION SPEC: 114-13261

SCALE: 10:1 SHEET 1 OF 1 REV A5