

4

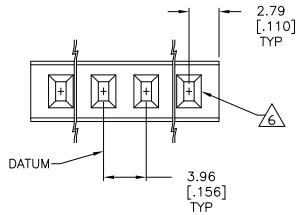
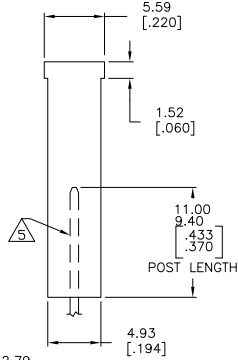
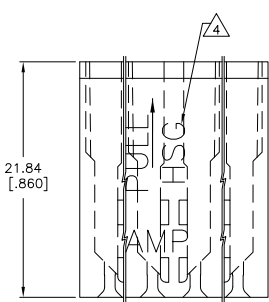
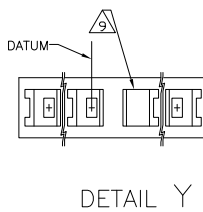
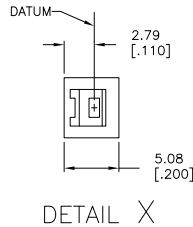
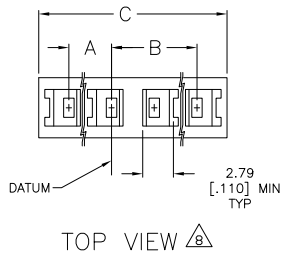
3

2

1

THIS DRAWING IS UNPUBLISHED. RELEASED FOR PUBLICATION. ALL RIGHTS RESERVED.

LOC	DIST	REVISIONS					
AD	00	F	LNK	DESCRIPTION	DATE	BY	APPD
		J2		REVISED PER ECO-11-004820	11MAR11	RK	HMR



- PULL ON HOUSING TO REMOVE FROM POSTS. DO NOT CONFINE THE CONDUCTORS OR PULL ON THE CONDUCTORS DURING REMOVAL ACTION.
 - IN ORDER FOR THIS HOUSING TO FUNCTION PROPERLY AS A CONNECTOR, THE CONTACTS (P/N 87278 SERIES) MUST BE CRIMPED ACCORDING TO AMP SPEC 114-25008.
- ▲ MOLDED CHARACTERS THIS END.
 - ▲ .79[.031] X 1.57[.062] POST SHOWN FOR REFERENCE ONLY.
 - ▲ CAVITY ACCEPTS 0.79[.031] X 1.57[.062] POST (TYPICAL).
 - ▲ BOLD CAVITY INDICATES TYPICAL DATUM.
 - ▲ THIS VIEW TO BE REFERENCED WITH CAVITY ORIENTATION CHART.
 - ▲ NO POST ENTREE HOLE IN THIS LOCATION.
 - ▲ SEE DETAIL X.
 - ▲ SEE DETAIL Y.
 - ▲ OBSOLETE PART NUMBER.
 - ▲ OBSOLETE PARTS: OBSOLETE CIS STREAMLINING PER D.RENAUD/D.SINISI

CAVITY ORIENTATION CHART	C	B	PART NUMBER			
▲ OBSOLETE	□□□□□□□□□□	53.14 [2.092]	23.77 [.936]	23.77 [.936]	13	1-87270-8
▲ OBSOLETE	□□□□□□□□□□	45.21 [1.780]	19.81 [.780]	19.81 [.780]	11	1-87270-7
	□□□□□□□□□□	37.29 [1.468]	15.85 [.624]	15.85 [.624]	9	1-87270-6
	□□□□□□□□□□	29.36 [1.156]	11.89 [.468]	11.89 [.468]	7	1-87270-5
	□□□□□□□□□□	21.44 [.844]	7.92 [.312]	7.92 [.312]	5	1-87270-4
	□□□□□□□□□□	13.51 [.532]	3.96 [.156]	3.96 [.156]	3	1-87270-3
	□□□□□□□□□□	25.40 [1.000]	11.89 [.468]	7.92 [.312]	5 OF 6	1-87270-2
▲ OBSOLETE	□□□□□□□□□□	29.36 [1.156]	11.89 [.468]	11.89 [.468]	6 OF 7	1-87270-1
	□□□□□□□□□□	21.44 [.844]	7.92 [.312]	7.92 [.312]	4 OF 5	1-87270-0
▲	□□□□□□□□□□	57.10 [2.248]	27.74 [1.092]	23.77 [.963]	14	87270-9
	□□□□□□□□□□	49.17 [1.936]	23.77 [.936]	19.81 [.780]	12	87270-8
	□□□□□□□□□□	41.25 [1.624]	19.81 [.780]	15.85 [.624]	10	87270-7
	□□□□□□□□□□	33.32 [1.312]	15.85 [.624]	11.89 [.468]	8	87270-6
	□□□□□□□□□□	25.40 [1.000]	11.89 [.468]	7.92 [.312]	6	87270-5
	□□□□□□□□□□	17.48 [.688]	7.92 [.312]	3.96 [.156]	4	87270-4
	□□□□□□□□□□	17.48 [.688]	7.92 [.312]	3.96 [.156]	3 OF 4	87270-3
	□□□□□□□□□□	9.55 [.376]	-	-	2	87270-2
	□□□□□□□□□□	5.08 [.200]	-	-	1	87270-1

THIS DRAWING IS A CONTROLLED DOCUMENT.

DIMENSIONS: mm [INCHES]
 TOLERANCES UNLESS OTHERWISE SPECIFIED:
 0 PLG ± .010
 1 PLG ± .010
 2 PLG ± .010
 3 PLG ± .010 (0.005)
 4 PLG ± .010
 ANGLES ± .5°
 FINISH -
 MATERIAL: GLASS FILLED POLYESTER
 COLOR: BLACK

E. BRANDBERG 25FEB93
 CHK. SCOTT A. SHUEY 25FEB93
 APPD. SCOTT A. SHUEY 25FEB93
 PRODUCT SPEC: -
 APPLICATION SPEC: -
 WEIGHT: -
 CUSTOMER DRAWING

TE TE Connectivity
 HOUSING, LOCKING CLIP,
 SINGLE ROW, .156 CENTERS
 FOR .031 X .062 POST

SIZE: A2
 ONE CODE: 00779
 DRAWING NO: C-87270
 SCALE: 4:1
 SHEET: 1 of 1
 REV: J2