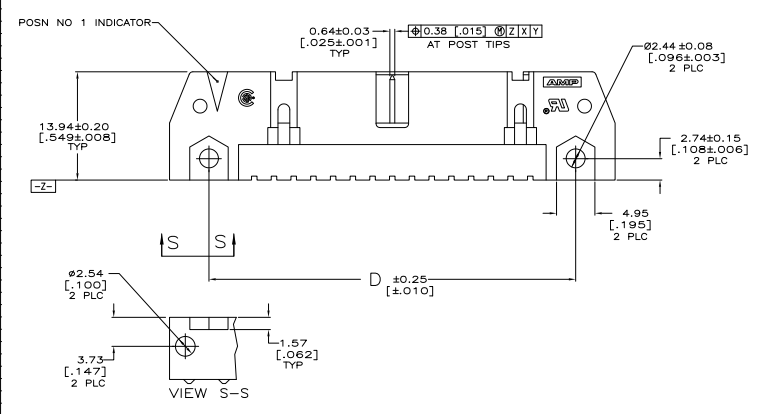
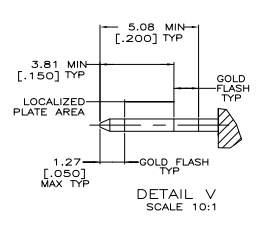
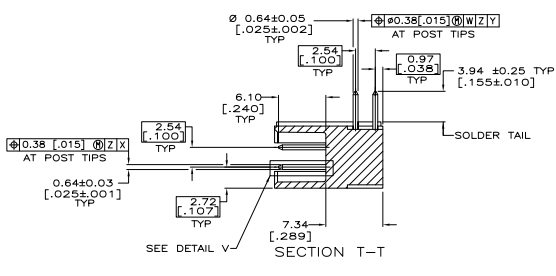
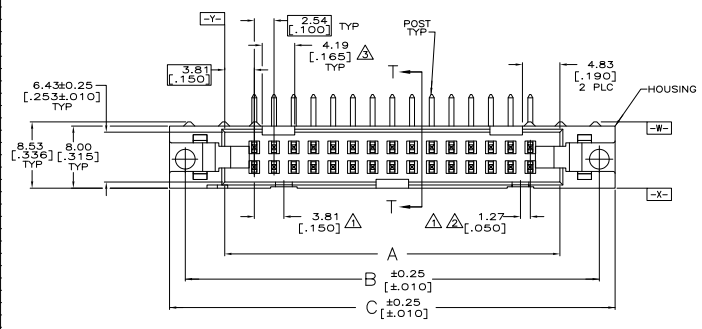
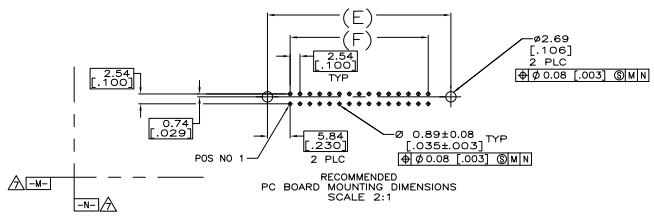


THIS DRAWING IS UNPUBLISHED
 ALL RIGHTS RESERVED

REV	DATE	DESCRIPTION	BY	APP
00				
01		REVISED PER EDD-11-004835	11MMR11	RK HMR



SEE SHEET 2 FOR TABLE & NOTES

THIS DRAWING IS A CONTROLLED DOCUMENT.		REV. 01	DATE 01-20-20	BY 11MMR11	APP RKH
DRAWN BY 11MMR11		DESIGNED BY 11MMR11	CHECKED BY 11MMR11	DATE 01-20-20	SCALE 1:1
MATERIAL: 108-40018		PART NAME: HEADER ASSY, UNIVERSAL AMP-LATCH		REVISED TO: ---	
CUSTOMER DRAWING		SIZE: A1	DATE: 00779	DRAWING NO: 5102162	REVISIONS: ---
SHEET 4.1		OF 2		REV. 01	

THIS DRAWING IS UNPUBLISHED	NECESSARY FOR FABRICATION
ALL RIGHTS RESERVED	

REV	DATE	DESCRIPTION	BY	APP
00		SEE SHEET 1		

- △ COORDINATE DIMENSION APPLIES FROM BASIC LOCATION.
- △ 8, 10 AND 14 POSITION SIZES CONTAIN ONLY ONE SLOT FOR SNAP-IN POLARIZER (MILITARY POLARIZATION) LOCATED AS SHOWN.
- △ 8 AND 10 POSITION SIZES CONTAIN ONLY ONE SLOT FOR DUAL POLARIZATION, LOCATED AS SHOWN.
- 4. RECOMMENDED PRINTED CIRCUIT BOARD THICKNESS IS 3.18 [-.125].
- △ MATERIAL:
HOUSING: GLASS FILLED NYLON OR POLYESTER, UL94V-0 RATED, SEE TABLE FOR COLOR.
POSTS: BRASS
- △ FINISH:
POSTS: GOLD FLASH OVER PALLADIUM-NICKEL PLATE, 0.76μm[.000030] MIN TOTAL ON THE LOCALIZED PLATE AREA, 2.54μm[.000100] MIN TIN PLATE ON THE SOLDER-TAIL, 1.27μm[.000050] MIN NICKEL UNDERPLATE ON THE ENTIRE POST.
-OR-
0.76μm[.000030] MIN GOLD PLATE ON THE LOCALIZED PLATE AREA, 2.54μm[.000100] MIN TIN PLATE ON THE SOLDER-TAIL, 1.27μm[.000050] MIN NICKEL UNDERPLATE ON THE ENTIRE POST.
- △ DATUMS -M- & -N- TO BE ESTABLISHED BY CUSTOMER.

BLUE	73.66	85.34	85.34	95.50	91.44	81.28	60	3-5102162-1
	[2.900]	[3.360]	[3.360]	[3.760]	[3.600]	[3.200]		
BLUE	60.96	72.64	72.64	82.80	78.74	68.58	50	3-5102162-0
	[2.400]	[2.860]	[2.860]	[3.260]	[3.100]	[2.700]		
BLUE	30.48	42.16	42.16	52.32	48.26	38.10	26	2-5102162-6
	[1.200]	[1.660]	[1.660]	[2.060]	[1.900]	[1.500]		
BLUE	15.24	26.92	26.92	37.08	33.02	22.86	14	2-5102162-2
	[.600]	[1.060]	[1.060]	[1.460]	[1.300]	[.900]		
BLUE	10.16	21.84	21.84	32.00	27.94	17.78	10	2-5102162-1
	[.400]	[.860]	[.860]	[1.260]	[1.100]	[.700]		
BLACK	78.74	90.42	90.42	100.58	96.52	86.36	64	1-5102162-2
	[3.100]	[3.560]	[3.560]	[3.960]	[3.800]	[3.400]		
BLACK	73.66	85.34	85.34	95.50	91.44	81.28	60	1-5102162-1
	[2.900]	[3.360]	[3.360]	[3.760]	[3.600]	[3.200]		
BLACK	60.96	72.64	72.64	82.80	78.74	68.58	50	1-5102162-0
	[2.400]	[2.860]	[2.860]	[3.260]	[3.100]	[2.700]		
OBSOLETE	48.26	59.94	59.94	70.10	66.04	55.88	40	5102162-9
	[1.900]	[2.360]	[2.360]	[2.760]	[2.600]	[2.200]		
BLACK	40.64	52.32	52.32	62.48	58.42	48.26	34	5102162-8
	[1.600]	[2.060]	[2.060]	[2.460]	[2.300]	[1.900]		
BLACK	35.56	47.24	47.24	57.40	53.34	43.18	30	5102162-7
	[1.400]	[1.860]	[1.860]	[2.260]	[2.100]	[1.700]		
OBSOLETE	30.48	42.16	42.16	52.32	48.26	38.10	26	5102162-6
	[1.200]	[1.660]	[1.660]	[2.060]	[1.900]	[1.500]		
BLACK	27.94	39.62	39.62	49.78	45.72	35.56	24	5102162-5
	[1.100]	[1.560]	[1.560]	[1.960]	[1.800]	[1.400]		
OBSOLETE	22.86	34.54	34.54	44.70	40.64	30.48	20	5102162-4
	[.900]	[1.360]	[1.360]	[1.760]	[1.600]	[1.200]		
BLACK	17.78	29.46	29.46	39.62	35.56	25.40	16	5102162-3
	[.700]	[1.160]	[1.160]	[1.560]	[1.400]	[1.000]		
BLACK	15.24	26.92	26.92	37.08	33.02	22.86	14	5102162-2
	[.600]	[1.060]	[1.060]	[1.460]	[1.300]	[.900]		
BLACK	10.16	21.84	21.84	32.00	27.94	17.78	10	5102162-1
	[.400]	[.860]	[.860]	[1.260]	[1.100]	[.700]		

HOUSING COLOR	F	E	D	C	B	A	NO OF POSN	PART NUMBER
---------------	---	---	---	---	---	---	------------	-------------

THIS DRAWING IS A CONTROLLED DOCUMENT. SEE ATTACHED CONTROL DOCUMENT FOR BOLASH. M. WILMSLEY 01-31-22

TE Connectivity

108-40018

HEADER ASSY, UNIVERSAL AMP-LATCH

DATE: 01-31-22 DRAWING NO: A100779 ©=5102162

CUSTOMER DRAWING

REV: 1.1 SHEET: 2 OF 2