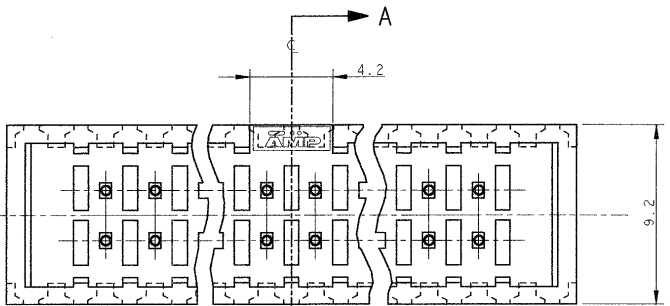
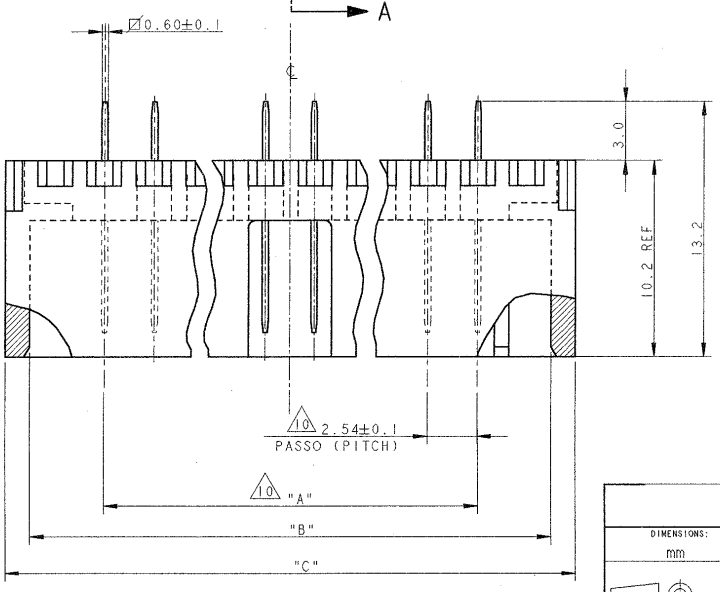
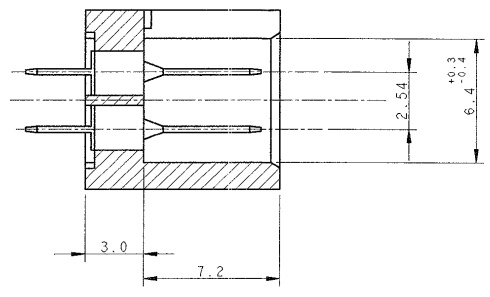


THIS DRAWING IS UNPUBLISHED. RELEASED FOR PUBLICATION
 (C) COPYRIGHT ALL RIGHTS RESERVED.

LOC	DIST	REVISIONS				
		REV	DESCRIPTION	DATE	DWN	APVD
1	-	T1	REVISED PER ECO-11-005140	01APR11	RK	HMR



SECTION A-A



QUESTO CONNETTORE E' APPROVATO E CERTIFICATO
 (THIS CONNECTOR IS APPROVED AND CERTIFIED)

DIMENSIONS: mm 		TOLERANCES UNLESS OTHERWISE SPECIFIED: ±0.3 1 PLC ± 2 PLC ± 3 PLC ± 4 PLC ± ANGLES ±0°		DWN: R. FABRIZIO 21 JUL 99 CHK: C. TARIARITA APVD:		TE Connectivity	
MATERIAL:		FINISH:		PRODUCT SPEC: 108-20038 APPLICATION SPEC:		NAME: AMP-LATCH POST SUPPORT ASS'Y STRAIGHT LOW PROFILE	
				WEIGHT:		SIZE: A3 CAGE CODE: 00779 DRAWING NO: ©=281271	
CUSTOMER DRAWING				SCALE: 5:1 SHEET 1 OF 2 REV T1			

THIS DRAWING IS UNPUBLISHED. RELEASED FOR PUBLICATION
 (C) COPYRIGHT ALL RIGHTS RESERVED.

LOC	DIST	REVISIONS					
		P	LTR	DESCRIPTION	DATE	DWN	APVD
1	-	-	-	SEE SHEET 1	-	-	-

POS.	N° VIE	PART NUMBER	REV.	DIM. 'A'	DIM. 'B'	DIM. 'C'
10	5x2	1-281271-1	S	10.16	17.78	20.32
14	7x2	1-281272-1	S	15.24	22.86	25.40
16	8x2	1-281273-1	S	17.78	25.40	27.94
20	10x2	1-281274-1	S	22.86	30.48	33.02
26	13x2	1-281275-1	S	30.48	38.10	40.64
34	17x2	1-281276-1	S	40.64	48.26	50.80
40	20x2	1-281277-1	S	48.26	55.88	58.42
50	25x2	1-281278-1	S	60.96	68.58	71.12

POS.	N° VIE	PART NUMBER	REV.	DIM. 'A'	DIM. 'B'	DIM. 'C'
10	5x2	281271-5	S	10.16	17.78	20.32
14	7x2	281272-5	S	15.24	22.86	25.40
16	8x2	281273-5	S	17.78	25.40	27.94
20	10x2	281274-5	S	22.86	30.48	33.02
26	13x2	281275-5	S	30.48	38.10	40.64
34	17x2	281276-5	S	40.64	48.26	50.80
40	20x2	281277-5	S	48.26	55.88	58.42
50	25x2	281278-5	S	60.96	68.58	71.12
60	30x2	281836-5	S	73.66	81.28	83.82

POS.	N° VIE	PART NUMBER	REV.	DIM. 'A'	DIM. 'B'	DIM. 'C'
10	5x2	281271-3	S	10.16	17.78	20.32
14	7x2	281272-3	S	15.24	22.86	25.40
16	8x2	281273-3	S	17.78	25.40	27.94
20	10x2	281274-3	S	22.86	30.48	33.02
26	13x2	281275-3	S	30.48	38.10	40.64
34	17x2	281276-3	S	40.64	48.26	50.80
40	20x2	281277-3	S	48.26	55.88	58.42
50	25x2	281278-3	S	60.96	68.58	71.12
60	30x2	281836-3	S	73.66	81.28	83.82

POS.	N° VIE	PART NUMBER	REV.	DIM. 'A'	DIM. 'B'	DIM. 'C'
10	5x2	281271-2	S	10.16	17.78	20.32
14	7x2	281272-2	S	15.24	22.86	25.40
16	8x2	281273-2	S	17.78	25.40	27.94
20	10x2	281274-2	S	22.86	30.48	33.02
26	13x2	281275-2	S	30.48	38.10	40.64
34	17x2	281276-2	S	40.64	48.26	50.80
40	20x2	281277-2	S	48.26	55.88	58.42
50	25x2	281278-2	S	60.96	68.58	71.12
60	30x2	281836-2	S	73.66	81.28	83.82

POS.	N° VIE	PART NUMBER	REV.	DIM. 'A'	DIM. 'B'	DIM. 'C'
10	5x2	281271-1	S	10.16	17.78	20.32
14	7x2	281272-1	S	15.24	22.86	25.40
16	8x2	281273-1	S	17.78	25.40	27.94
20	10x2	281274-1	S	22.86	30.48	33.02
26	13x2	281275-1	S	30.48	38.10	40.64
34	17x2	281276-1	S	40.64	48.26	50.80
40	20x2	281277-1	S	48.26	55.88	58.42
50	25x2	281278-1	S	60.96	68.58	71.12
60	30x2	281836-1	S	73.66	81.28	83.82

- 1 MATERIALE BLOCCHETTO: P.B.T. CARICATO VETRO, COLORE NERO
(HOUSING MATERIAL: P.B.T. G.F. FILLED, BLACK COLOUR)
- 2 MATERIALE BLOCCHETTO: P.B.T. CARICATO VETRO, COLORE GRIGIO
(HOUSING MATERIAL: P.B.T. G.F. FILLED, GRAY COLOUR)
- 3 MATERIALE BLOCCHETTO: RYTON, COLORE MARRONE
(HOUSING MATERIAL: RYTON, BROWN COLOUR)
- 4 MATERIALE CONTATTO: OTTONE
(CONTACT MATERIAL: BRASS)
- 5 FINITURA CONTATTO: 0.76µm DI ORO SU NICKEL NELLA ZONA DI CONTATTO
STAGNO SU NICKEL NELLA ZONA A SALDARE
(CONTACT FINISH: 0.76µm OF GOLD OVER NICKEL ON CONTACT ZONE
TIN OVER NICKEL ON SOLDER TAIL)
- 6 FINITURA CONTATTO: 0.38µm DI ORO SU NICKEL NELLA ZONA DI CONTATTO
STAGNO SU NICKEL NELLA ZONA A SALDARE
(CONTACT FINISH: 0.38µm OF GOLD OVER NICKEL ON CONTACT ZONE
TIN OVER NICKEL ON SOLDER TAIL)
- 7 FINITURA CONTATTO: 0.20µm DI ORO SU NICKEL NELLA ZONA DI CONTATTO
STAGNO SU NICKEL NELLA ZONA A SALDARE
(CONTACT FINISH: 0.20µm OF GOLD OVER NICKEL ON CONTACT ZONE
TIN OVER NICKEL ON SOLDER TAIL)
- 8 OBSOLETO
(OBSOLETE)
- 9 NON IN PRODUZIONE
(NOT YET RELEASED IN PRODUCTION)
- 10 TOLLERANZA NON CUMULATIVA
(NOT CUMULATIVE TOLERANCE)

DIMENSIONS:		TOLERANCES UNLESS OTHERWISE SPECIFIED:		DWN		CHK		APPROV 2		NAME	
		0 PLC + 1 PLC + 2 PLC + 3 PLC + 4 PLC + ANGLES ± FINISH ±		DIMENSIONS:		PRODUCT SPEC		APPLICATION SPEC		AMP-LATCH POST SUPPORT ASS'Y STRAIGHT LOW PROFILE	
MATERIAL		WEIGHT		SIZE		CAGE CODE		DRAWING NO		SCALE	
				A3		00779		C-281271		5:1	
CUSTOMER DRAWING		SHEET		OF		REV		T1			