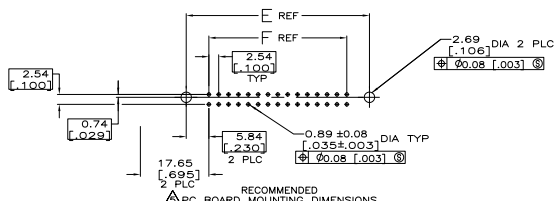
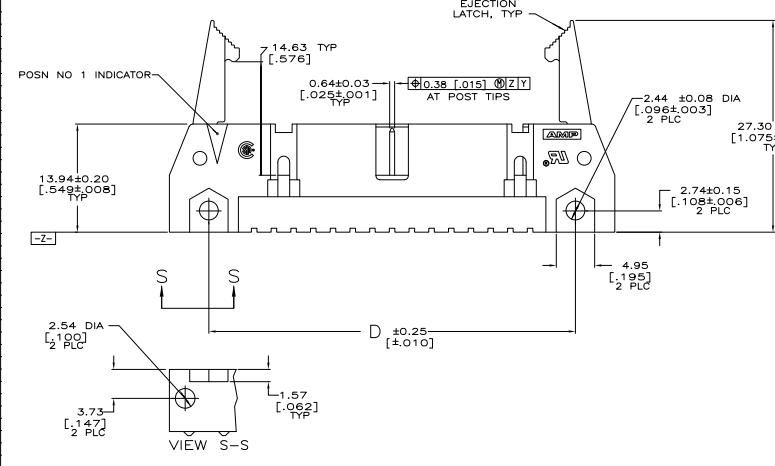
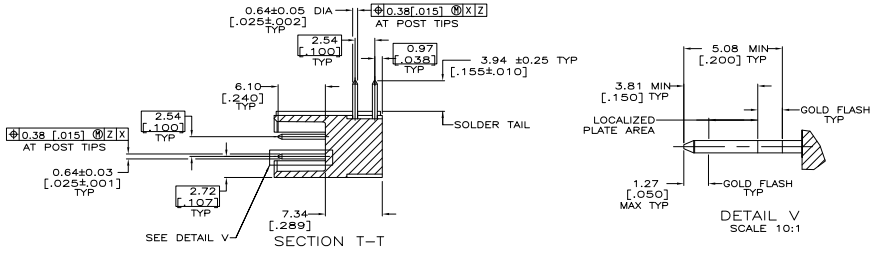
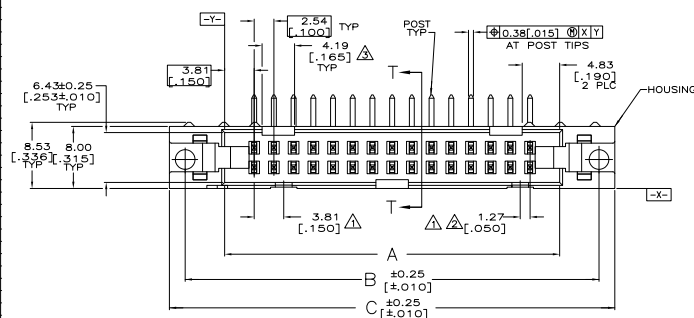


REV. NO.		REVISIONS		DATE	BY
GP	00	T	UM		
		K			ZMR/SJB



- △ COORDINATE DIMENSION APPLIES FROM BASIC LOCATION.
- △ 10 AND 14 POSITION SIZES CONTAIN ONLY ONE SLOT FOR SNAP-IN POLARIZER (MILITARY POLARIZATION) LOCATED AS SHOWN.
- △ 10 POSITION SIZES CONTAIN ONLY ONE SLOT FOR DUAL POLARIZATION, LOCATED AS SHOWN.
- 4. RECOMMENDED PRINTED CIRCUIT BOARD THICKNESS IS 3.18 [1.25] DISTANCE REQUIRED BY EJECTION LATCHES IN THE OPEN POSITION.
- △ POSTS: GOLD FLASH OVER PALLADIUM-NICKEL PLATE, 0.76µm [0.00030] MIN TOTAL ON THE LOCALIZED PLATE AREA, 2.54µm [0.00100] MIN TIN-LEAD PLATE ON THE SOLDER-TAILS, 1.27µm [0.00050] MIN NICKEL UNDERPLATE ON THE ENTIRE POST.
- △ 0.76µm [0.00030] MIN GOLD PLATE ON THE LOCALIZED PLATE AREA, 2.54µm [0.00100] MIN TIN-LEAD PLATE ON THE SOLDER-TAILS, 1.27µm [0.00050] MIN NICKEL UNDERPLATE ON THE ENTIRE POST.



	53.34	65.02	65.02	75.18	71.12	60.96	44	1-102322-3
OBSOLETE	2.100	2.560	2.560	2.960	2.800	2.400	64	1-102322-2
OBSOLETE	78.74	90.42	90.42	100.58	96.52	86.36	60	1-102322-1
OBSOLETE	73.66	85.34	85.34	95.50	91.44	81.28	50	1-102322-0
OBSOLETE	2.900	3.360	3.360	3.760	3.600	3.200	40	102322-9
OBSOLETE	60.96	72.64	72.64	82.80	78.74	68.58	34	102322-8
OBSOLETE	2.400	2.860	2.860	3.260	3.100	2.700	30	102322-7
OBSOLETE	48.26	59.94	59.94	70.10	66.04	55.88	26	102322-6
OBSOLETE	1.900	2.360	2.360	2.760	2.600	2.200	24	102322-5
OBSOLETE	40.64	52.32	52.32	62.48	58.42	48.26	20	102322-4
OBSOLETE	1.600	2.060	2.060	2.460	2.300	1.900	16	102322-3
OBSOLETE	35.56	47.24	47.24	57.40	53.34	43.18	14	102322-2
OBSOLETE	1.400	1.860	1.860	2.260	2.100	1.700	10	102322-1
	30.48	42.16	42.16	52.32	48.26	38.10		
	1.200	1.660	1.660	2.060	1.900	1.500		
	27.94	39.62	39.62	49.78	45.72	35.56		
	1.100	1.560	1.560	1.960	1.800	1.400		
	22.86	34.54	34.54	44.70	40.64	30.48		
	1.900	1.360	1.360	1.760	1.600	1.200		
	17.78	29.46	29.46	39.62	35.56	25.40		
	1.700	1.160	1.160	1.560	1.400	1.000		
	15.24	26.92	26.92	37.08	33.02	22.86		
	1.600	1.060	1.060	1.460	1.300	0.900		
	10.16	21.84	21.84	32.00	27.94	17.78		
	1.400	0.860	0.860	1.260	1.100	0.700		

THIS DRAWING IS A CONTROLLED DOCUMENT © 2010 Teledyne

TELEDYNE ELECTRONICS CORPORATION
Harrisburg, PA 17102-3808

REVISIONS: 11-28-92, 11-28-92, 11-28-92

DESCRIPTION: HEADER ASSY, UNIVERSAL AMP-LATCH

108-40018

REVISED PER ECO-08-04882

DRAWING NO: A1 00779

PART NUMBER: 102322