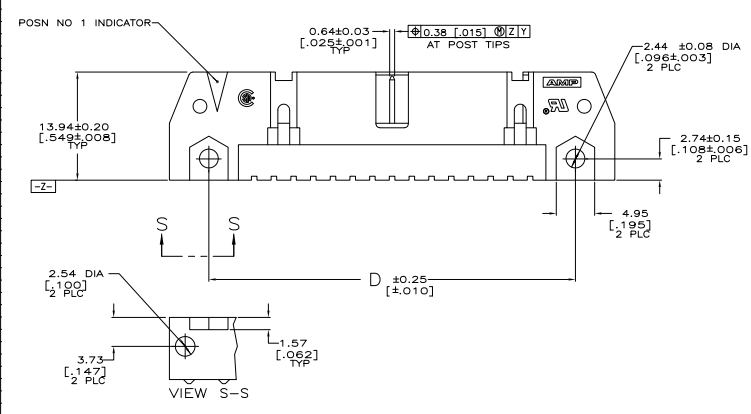
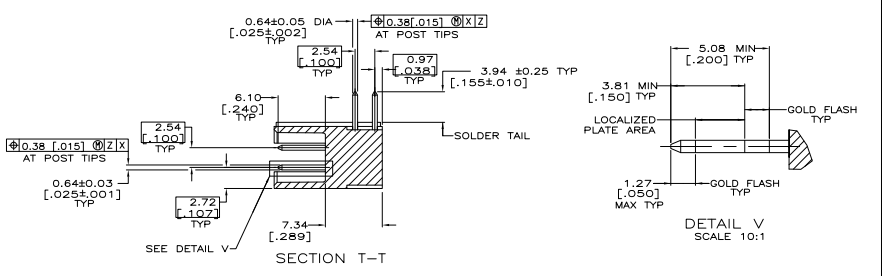
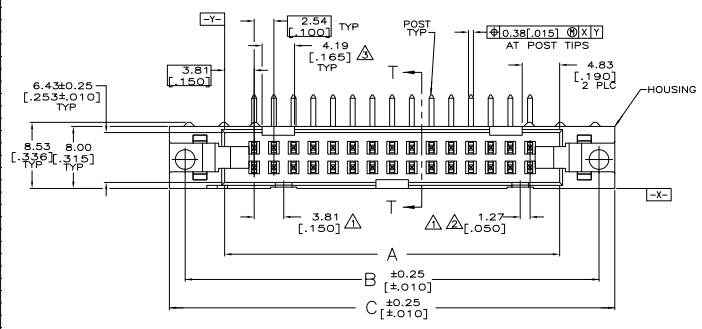


- △ COORDINATE DIMENSION APPLIES FROM BASIC LOCATION.
- 8, 10 AND 14 POSITION SIZES CONTAIN ONLY ONE SLOT FOR SNAP-IN POLARIZER (MILITARY POLARIZATION) LOCATED AS SHOWN.
- △ 8 AND 10 POSITION SIZES CONTAIN ONLY ONE SLOT FOR DUAL POLARIZATION, LOCATED AS SHOWN.
- 4. RECOMMENDED PRINTED CIRCUIT BOARD THICKNESS IS 3.18 [125].
- △ POSTS: GOLD FLASH OVER PALLADIUM-NICKEL PLATE, 0.76μm [0.00030] MIN TOTAL ON THE LOCALIZED PLATE AREA, 2.54μm [0.000100] MIN TIN-LEAD PLATE ON THE SOLDER-TAILS, 1.27μm [0.000050] MIN NICKEL UNDERPLATE ON THE ENTIRE POST.
- OR
- △ 0.76μm [0.00030] MIN GOLD PLATE ON THE LOCALIZED PLATE AREA, 2.54μm [0.000100] MIN TIN-LEAD PLATE ON THE SOLDER-TAILS, 1.27μm [0.000050] MIN NICKEL UNDERPLATE ON THE ENTIRE POST.



OBsolete	7.62 [3.00]	19.30 [7.60]	19.30 [7.60]	29.46 [11.60]	25.40 [1.000]	15.24 [6.00]	8	1-102162-4
OBsolete	53.34 [2.100]	65.02 [2.560]	65.02 [2.560]	75.18 [2.960]	71.12 [2.800]	60.96 [2.400]	44	1-102162-3
	78.74 [3.100]	90.42 [3.560]	90.42 [3.560]	100.58 [3.960]	96.52 [3.800]	86.36 [3.400]	64	1-102162-2
	73.66 [2.900]	85.34 [3.360]	85.34 [3.360]	95.50 [3.760]	91.44 [3.600]	81.28 [3.200]	60	1-102162-1
	60.96 [2.400]	72.64 [2.860]	72.64 [2.860]	82.80 [3.260]	78.74 [3.100]	68.58 [2.700]	50	1-102162-0
OBsolete	1.900 [0.750]	2.360 [0.930]	2.360 [0.930]	2.760 [1.090]	2.600 [1.000]	2.200 [0.870]	40	102162-9
	40.64 [1.600]	52.32 [2.060]	52.32 [2.060]	62.48 [2.460]	58.42 [2.300]	48.26 [1.900]	34	102162-8
	48.26 [1.900]	59.94 [2.360]	59.94 [2.360]	70.10 [2.760]	66.04 [2.600]	55.88 [2.200]	30	102162-7
OBsolete	30.48 [1.200]	42.16 [1.660]	42.16 [1.660]	52.32 [2.060]	48.26 [1.900]	38.10 [1.500]	26	102162-6
OBsolete	27.94 [1.100]	39.62 [1.560]	39.62 [1.560]	49.78 [1.960]	45.72 [1.800]	35.56 [1.400]	24	102162-5
OBsolete	22.86 [0.900]	34.54 [1.360]	34.54 [1.360]	44.70 [1.760]	40.64 [1.600]	30.48 [1.200]	20	102162-4
OBsolete	17.78 [0.700]	29.46 [1.160]	29.46 [1.160]	39.62 [1.560]	35.56 [1.400]	25.40 [1.000]	16	102162-3
OBsolete	15.24 [0.600]	26.92 [1.060]	26.92 [1.060]	37.08 [1.460]	33.02 [1.300]	22.86 [0.900]	14	102162-2
	10.16 [0.400]	21.84 [0.860]	21.84 [0.860]	32.00 [1.260]	27.94 [1.100]	17.78 [0.700]	10	102162-1

THIS DRAWING IS A CONTROLLED DOCUMENT.		DATE	REV	BY	CHKD	APP'D
REVISIONS		DATE	REV	BY	CHKD	APP'D
MATERIALS		DATE	REV	BY	CHKD	APP'D
DRAWING		DATE	REV	BY	CHKD	APP'D
CUSTOMER DRAWING		DATE	REV	BY	CHKD	APP'D

Teco Electronics Corporation
 Harrisburg, PA 17102-3608
 HEADERS ASSY, UNIVERSAL AMP-LATCH*
 108-40018
 100779G-102162
 SCALE 2:1