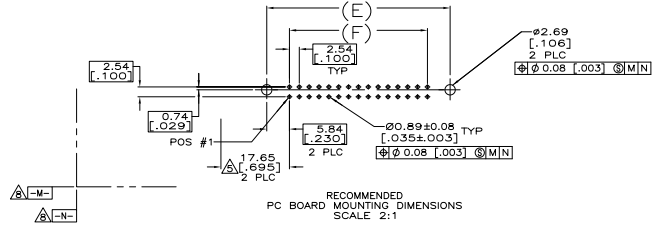
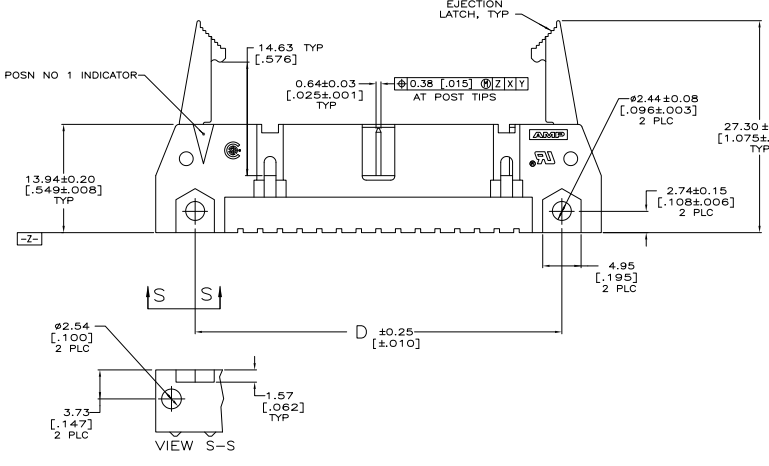
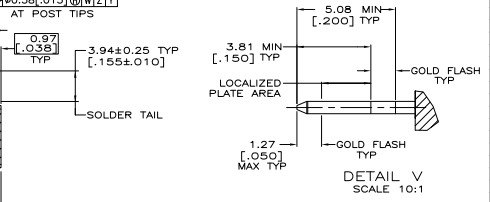
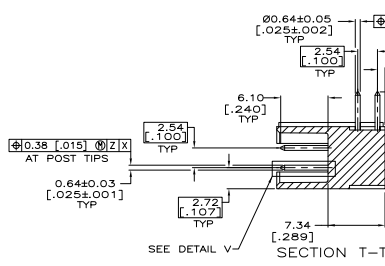
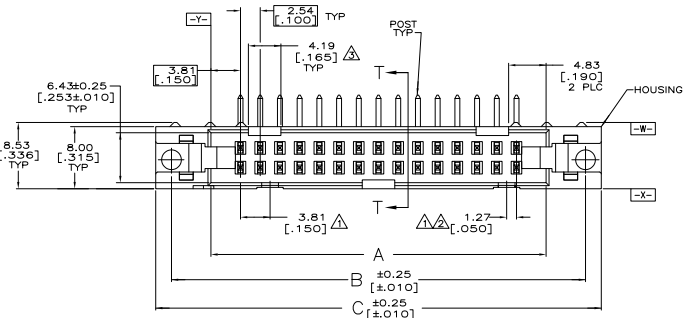


REV	DATE	DESCRIPTION	BY	CHK	APP
00		REVISED PER EDD-11-004835			



- △ COORDINATE DIMENSION APPLIES FROM BASIC LOCATION.
- 10 AND 14 POSITION SIZES CONTAIN ONLY ONE SLOT FOR SNAP-IN POLARIZER (MILITARY POLARIZATION) LOCATED AS SHOWN.
- △ 10 POSITION SIZE CONTAINS ONLY ONE SLOT FOR DUAL POLARIZATION, LOCATED AS SHOWN.
- 4. RECOMMENDED PRINTED CIRCUIT BOARD THICKNESS IS 3.18 [0.125].
- △ DISTANCE REQUIRED BY EJECTION LATCHES IN THE OPEN POSITION.
- △ HOUSING & LATCHES: GLASS FILLED NYLON OR POLYESTER, 94V-0 RATED; COLOR, SEE TABLE.
- △ POSTS: GOLD FLASH OVER PALLADIUM-NICKEL PLATE, 0.76μm [0.00030] MIN TOTAL ON THE LOCALIZED PLATE AREA, 2.54μm [0.00100] MIN TIN PLATE ON THE SOLDER-TAIL, 1.27μm [0.00050] MIN NICKEL UNDERPLATE ON THE ENTIRE POST.
- OR-
- 0.76μm [0.00030] MIN GOLD PLATE ON THE LOCALIZED PLATE AREA, 2.54μm [0.00100] MIN TIN PLATE ON THE SOLDER-TAIL, 1.27μm [0.00050] MIN NICKEL UNDERPLATE ON THE ENTIRE POST.
- △ DATUMS -M- & -N- TO BE ESTABLISHED BY CUSTOMER.

EJECTION LATCHES OMITTED IN THIS VIEW FOR CLARITY



	BLUE	BLUE	BLUE	BLUE	BLUE	BLUE	BLUE	BLUE	BLUE	NO OF POSN	PART NUMBER
	73.66	85.34	85.34	95.50	91.44	81.28	60	3-5102322-1			
	2.900	3.360	3.360	3.760	3.600	3.200					
	60.96	72.64	72.64	82.80	78.74	68.58	50	3-5102322-0			
	2.400	2.860	2.860	3.260	3.100	2.700					
	48.26	59.94	59.94	70.10	66.04	55.88	40	2-5102322-9			
	1.900	2.360	2.360	2.760	2.600	2.200					
OBSOLETE	30.48	42.16	42.16	52.32	48.26	38.10	26	2-5102322-6			
	1.200	1.660	1.660	2.060	1.900	1.500					
	15.24	26.92	26.92	37.08	33.02	22.86	14	2-5102322-2			
	0.600	1.060	1.060	1.460	1.300	0.900					
	10.16	21.84	21.84	32.00	27.94	17.78	10	2-5102322-1			
	0.400	0.860	0.860	1.260	1.100	0.700					
OBSOLETE	73.66	85.34	85.34	95.50	91.44	81.28	60	1-5102322-1			
	2.900	3.360	3.360	3.760	3.600	3.200					
OBSOLETE	60.96	72.64	72.64	82.80	78.74	68.58	50	1-5102322-0			
	2.400	2.860	2.860	3.260	3.100	2.700					
OBSOLETE	48.26	59.94	59.94	70.10	66.04	55.88	40	5102322-9			
	1.900	2.360	2.360	2.760	2.600	2.200					
OBSOLETE	30.48	42.16	42.16	52.32	48.26	38.10	26	5102322-6			
	1.200	1.660	1.660	2.060	1.900	1.500					
OBSOLETE	15.24	26.92	26.92	37.08	33.02	22.86	14	5102322-2			
	0.600	1.060	1.060	1.460	1.300	0.900					
	10.16	21.84	21.84	32.00	27.94	17.78	10	5102322-1			
	0.400	0.860	0.860	1.260	1.100	0.700					
MATERIAL COLOR	F	E	D	C	B	A					

THIS DRAWING IS A CONTROLLED DOCUMENT.

REVISED PER EDD-11-004835

DATE: 108-40018

DATE: 100779

DATE: 5102322

DATE: 4.1

DATE: 1

DATE: 61