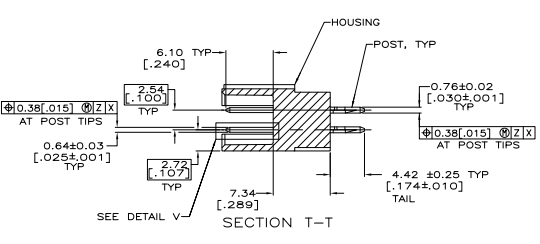
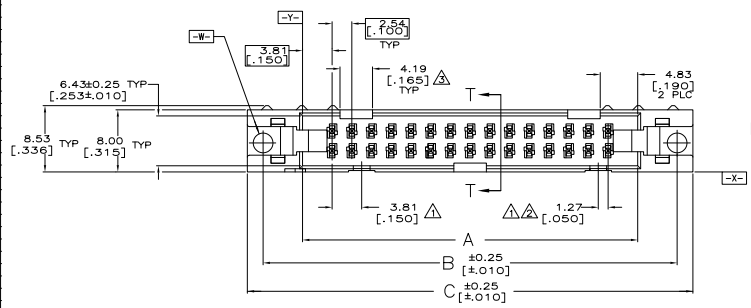
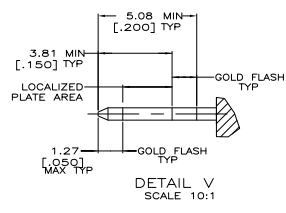
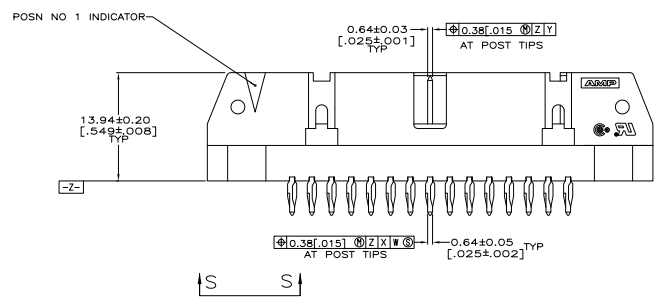


THIS DRAWING IS UNPUBLISHED  
 ALL RIGHTS RESERVED

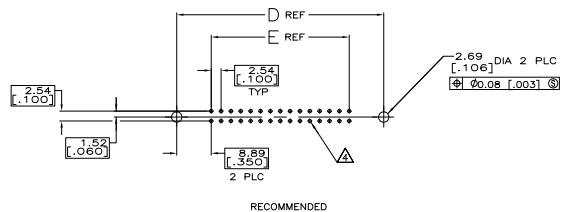
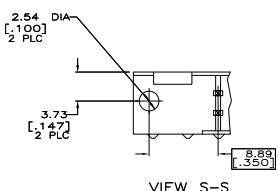
REV	DATE	DESCRIPTION	BY	CHK
00				
01		REVISED PER EDD-11-004835	11MM11	RK HMR



- ▲ COORDINATE DIMENSION APPLIES FROM BASIC LOCATION.
- ▲ 10 AND 14 POSITION SIZES CONTAIN ONLY ONE SLOT FOR SNAP-IN POLARIZER (MILITARY POLARIZATION) LOCATED AS SHOWN.
- ▲ 10 POSITION SIZES CONTAIN ONLY ONE SLOT FOR DUAL POLARIZATION, LOCATED AS SHOWN.
- ▲ REFER TO APPLICATION SPECIFICATION 114-40020 FOR HOLE SIZE AND FINISH RECOMMENDATIONS.
- ▲ POSTS: GOLD FLASH OVER PALLADIUM-NICKEL PLATE, 0.76µm[.00030] MIN TOTAL ON THE LOCALIZED PLATE AREA, 2.54µm[.00010] MIN TIN-LEAD PLATE ON THE TAIL, 1.27µm[.00050] MIN NICKEL UNDERPLATE ON THE ENTIRE POST.
- ▲ 0.76µm[.00030] MIN GOLD PLATE ON THE LOCALIZED PLATE AREA, 2.54µm[.00010] MIN TIN-LEAD PLATE ON THE TAIL, 1.27µm[.00050] MIN NICKEL UNDERPLATE ON THE ENTIRE POST.



OBsolete	53.34	71.12	75.18	71.12	60.96	44	1-499582-3
	2.100	2.800	2.960	2.800	2.400		
	78.74	96.52	100.58	96.52	86.36	64	1-499582-2
	3.100	3.800	3.960	3.800	3.400		
	73.66	91.44	95.50	91.44	81.28	60	1-499582-1
	2.900	3.600	3.760	3.600	3.200		
	60.96	78.74	82.80	78.74	68.58	50	1-499582-0
	2.400	3.100	3.260	3.100	2.700		
	48.26	66.04	70.10	66.04	55.88	40	499582-9
	1.900	2.600	2.760	2.600	2.200		
	40.64	58.42	62.48	58.42	48.26	34	499582-8
	1.600	2.300	2.460	2.300	1.900		
	35.56	53.34	57.40	53.34	43.18	30	499582-7
	1.400	2.100	2.260	2.100	1.700		
	30.48	48.26	52.32	48.26	38.10	26	499582-6
	1.200	1.900	2.060	1.900	1.500		
	27.94	45.72	49.78	45.72	35.56	24	499582-5
	1.100	1.800	1.960	1.800	1.400		
	22.86	40.64	44.70	40.64	30.48	20	499582-4
	1.000	1.600	1.760	1.600	1.200		
	17.78	35.56	39.62	35.56	25.40	16	499582-3
	1.000	1.400	1.560	1.400	1.000		
	15.24	33.02	37.08	33.02	22.86	14	499582-2
	1.000	1.300	1.460	1.300	1.000		
	10.16	27.94	32.00	27.94	17.78	10	499582-1
	1.000	1.100	1.260	1.100	1.000		
	E	D	C	B	A	NO OF POSN	PART NUMBER



THIS DRAWING IS A CONTROLLED DOCUMENT. REV. 00 DATE 11-18-93

TE Connectivity

108-40018

114-40020

00779

499582

4:1