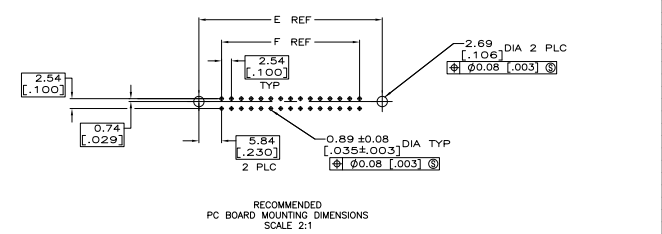
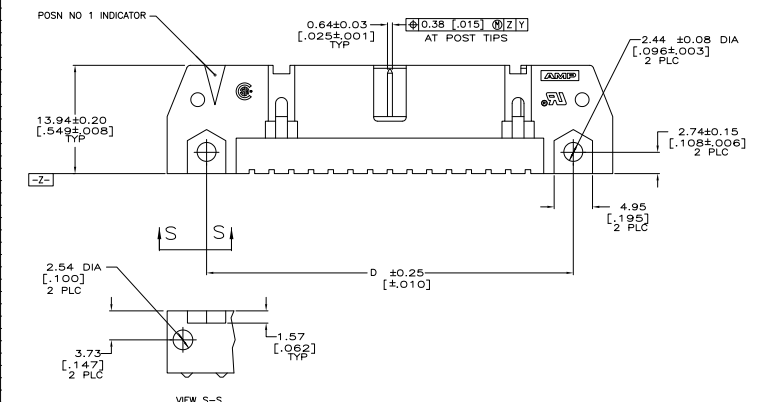
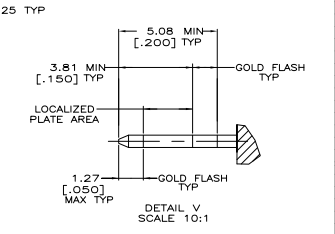
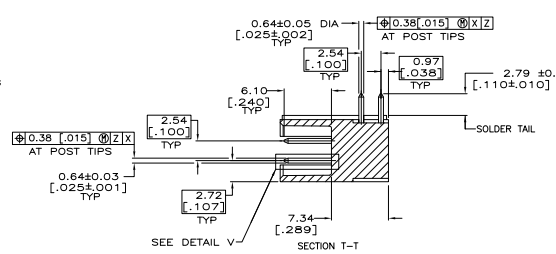
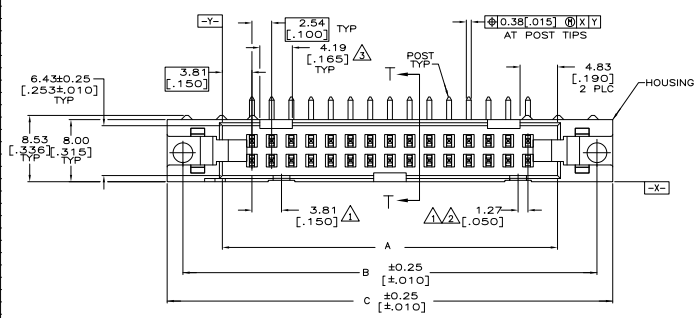


THIS DRAWING IS UNPUBLISHED
 ALL RIGHTS RESERVED

REV	DATE	DESCRIPTION	BY	CHK	APP
00					
M1		REVISED PER EDD-11-004835			



THIS DRAWING IS A CONTROLLED DOCUMENT.		REV. NO.	41-31-91
UNLESS OTHERWISE SPECIFIED, DIMENSIONS ARE IN INCHES.		DATE	11/26/91
DRAWN BY: [Signature]		PROJECT NO.	108-40018
CHECKED BY: [Signature]		REV. NO.	0
APPROVED BY: [Signature]		DATE	11/26/91
CUSTOMER DRAWING		SIZE	A1
SEE SHEET 2		SEE SHEET 2	SEE SHEET 2
SEE SHEET 2		SEE SHEET 2	SEE SHEET 2
SEE SHEET 2		SEE SHEET 2	SEE SHEET 2

THIS DRAWING IS UNPUBLISHED
 ALL RIGHTS RESERVED

REV	DATE	DESCRIPTION	BY	APP
00		SEE SHEET 1		

- △ COORDINATE DIMENSION APPLIES FROM BASIC LOCATION.
- △ 10 AND 14 POSITION SIZES CONTAIN ONLY ONE SLOT FOR SNAP-IN POLARIZER (MILITARY POLARIZATION) LOCATED AS SHOWN.
- △ 10 POSITION SIZES CONTAIN ONLY ONE SLOT FOR DUAL POLARIZATION, LOCATED AS SHOWN.
- 4. RECOMMENDED PRINTED CIRCUIT BOARD THICKNESS IS 1.57 [0.62].
- △ POSTS:
 GOLD FLASH OVER PALLADIUM-NICKEL PLATE, 0.38µm [0.00015] MIN TOTAL ON THE LOCALIZED PLATE AREA,
 2.54µm [0.00100] MIN TIN-LEAD PLATE ON THE SOLDER-TAIL,
 1.27µm [0.00050] MIN NICKEL UNDERPLATE ON THE ENTIRE POST,
 OR
 0.38µm [0.00015] MIN GOLD PLATE ON THE LOCALIZED PLATE AREA,
 2.54µm [0.00100] MIN TIN-LEAD PLATE ON THE SOLDER-TAIL,
 1.27µm [0.00050] MIN NICKEL UNDERPLATE ON THE ENTIRE POST.
- △ MATERIAL:
 HOUSING: GLASS FILLED NYLON OR POLYESTER, 94V-0 RATED, BLACK.
 POSTS: BRASS.

OBSOLETE	53.34	65.02	65.02	75.18	71.12	60.96	44	1-102159-3
	2.100	2.560	2.560	2.960	2.800	2.400		
	78.74	90.42	90.42	100.58	96.52	86.36	64	1-102159-2
	3.100	3.560	3.560	3.960	3.800	3.400		
	73.66	85.34	85.34	95.50	91.44	81.28	60	1-102159-1
	2.900	3.360	3.360	3.760	3.600	3.200		
	60.96	72.64	72.64	82.80	78.74	68.58	50	1-102159-0
	2.400	2.860	2.860	3.260	3.100	2.700		
	48.26	59.94	59.94	70.10	66.04	55.88	40	102159-9
	1.900	2.360	2.360	2.760	2.600	2.200		
	40.64	52.32	52.32	62.48	58.42	48.26	34	102159-8
	1.600	2.060	2.060	2.460	2.300	1.900		
	35.56	47.24	47.24	57.40	53.34	43.18	30	102159-7
	1.400	1.860	1.860	2.260	2.100	1.700		
	30.48	42.16	42.16	52.32	48.26	38.10	26	102159-6
	1.200	1.660	1.660	2.060	1.900	1.500		
	27.94	39.62	39.62	49.78	45.72	35.56		
OBSOLETE	1.100	1.560	1.560	1.960	1.800	1.400	24	102159-5
	22.86	34.54	34.54	44.70	40.64	30.48	20	102159-4
	1.900	1.360	1.360	1.760	1.600	1.200		
	17.78	29.46	29.46	39.62	35.56	25.40	16	102159-3
	1.700	1.160	1.160	1.560	1.400	1.000		
	15.24	26.92	26.92	37.08	33.02	22.86	14	102159-2
	1.600	1.060	1.060	1.460	1.300	1.900		
	10.16	21.84	21.84	32.00	27.94	17.78	10	102159-1
	1.400	1.860	1.860	1.260	1.100	1.700		
F	E	D	C	B	A		NO OF POSN	PART NUMBER

THIS DRAWING IS A CONTROLLED DOCUMENT.		REV. NO.	4-31-93
DRAWN BY: [Signature]		DATE	11/28/92
CHECKED BY: [Signature]		DATE	
APPROVED BY: [Signature]		DATE	
PROJECT NO.		108-40018	
CUSTOMER DRAWING		SIZE	A
DRAWING NO.		DATE	100779
REV. NO.		DATE	102159
SHEET		4	2
OF		2	2
MATERIAL		MT	