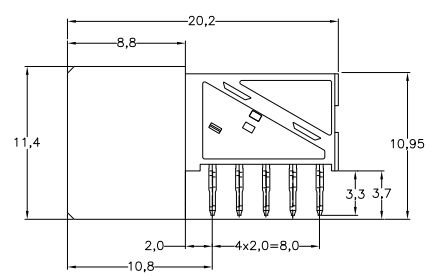
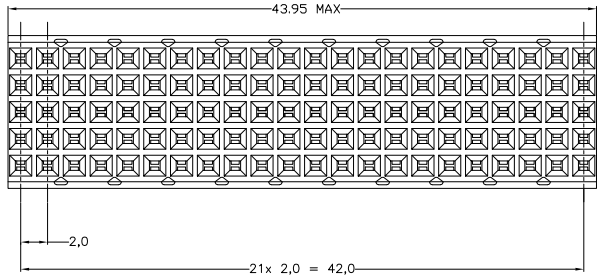
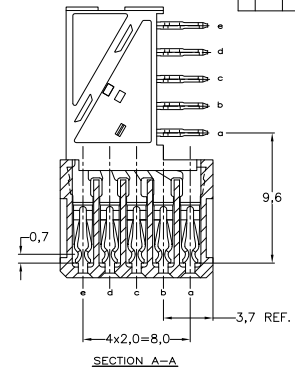
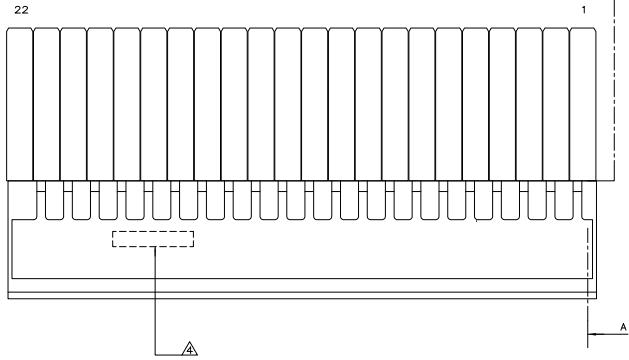
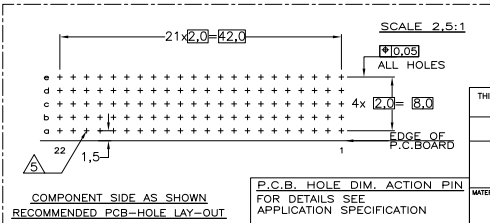


THIS DRAWING IS UNPUBLISHED. RELEASED FOR PUBLICATION
 © COPYRIGHT BY TYCO ELECTRONICS CORPORATION. ALL RIGHTS RESERVED.

REVISIONS					
REV	DATE	BY	APPD	DESCRIPTION	LOC
G	14SEP2010	LC	CW	REVISE PER ECO-10-018803	
H	22FEB12	SY	MOW	ECO-12-003005	



- NOTES:**
- ⚠ MATERIAL CONTACT; PHOSPHORBRONZE
 MATERIAL HOUSING; GLASSFILLED POLYESTER (GRAY)
 UL-RATING 94VD.
 - ⚠ GENERAL PLATING SPECIFICATION: UNDERPLATING (ENTIRE CONTACT):
 1.27µm NICKEL MIN. AND ACTION PIN: 0.5µm TIN-LEAD MIN.
 FOR PLATING OF MATING SURFACES SEE APPLICABLE SPECIFICATION
 REFERENCE FOR EACH DASH NUMBER.
 - ⚠ CONFORMS TO ALL TESTING ACCORDING IEC 61076-4-101
 PERFORMANCE LEVEL 2.
 - ⚠ CONNECTOR PRINTED WITH PARTNUMBER AND DATECODE
 PLATED-THROUGH HOLES AT 2x2mm SQUARE GRID, 110 HOLES
 - 6 FITS WITH INTEGRATED GROUND RETURN UPSHIELD
 BASIC P.N. 352151
 - ⚠ CONNECTOR TESTED AND QUALIFIED AGAINST TELCORDIA
 GR-1217-CORE QUALITY LEVEL III, CENTRAL OFFICE APPLICATIONS.
 - ⚠ 0.76µm MIN GOLD PLATING AT MATING SURFACES.



⚠	⚠	⚠	3-188836-0
⚠	⚠	⚠	188836-9
⚠	⚠	⚠	188836-1
FINISH	MATERIAL	PARTNUMBER	

THIS DRAWING IS A CONTROLLED DOCUMENT. DWG NO. 1118837
 E. MOHLMANN
 V.D. HELDEN
 F.V. KONINGSBRUGGE
 PRODUCT SPEC: 108-19082
 APPLICATION SPEC: 114-19029
 WEIGHT: -
 CUSTOMER DRAWING

Tyco Electronics Corporation
 s-Hertogenbosch, Netherlands.
 Z-PACK 2MM HM
 110 POS. FEMALE DAUGHTER CARD CONN.
 (22 COLUMNS)
 SIZE: A2 CASE CODE: 00779 DRAWING NO: 188836
 RESTRICTED TO: -
 SCALE: NTS SHEET 1 OF 1 REV: H

AMP 1471-9 REV 31MEX000

COMPONENT SIDE AS SHOWN
 RECOMMENDED PCB-HOLE LAY-OUT

P.C.B. HOLE DIM. ACTION PIN
 FOR DETAILS SEE
 APPLICATION SPECIFICATION

DIMENSIONS:		TOLERANCES UNLESS OTHERWISE SPECIFIED:	
MM			
0	PLC	± 0.2	
1	PLC	± 0.2	
2	PLC	± 0.2	
3	PLC	± 0.2	
4	PLC	± 0.2	
5	PLC	± 0.2	
6	PLC	± 0.2	
7	PLC	± 0.2	
8	PLC	± 0.2	
9	PLC	± 0.2	
10	PLC	± 0.2	
11	PLC	± 0.2	
12	PLC	± 0.2	
13	PLC	± 0.2	
14	PLC	± 0.2	
15	PLC	± 0.2	
16	PLC	± 0.2	
17	PLC	± 0.2	
18	PLC	± 0.2	
19	PLC	± 0.2	
20	PLC	± 0.2	
21	PLC	± 0.2	
22	PLC	± 0.2	

188836

A