

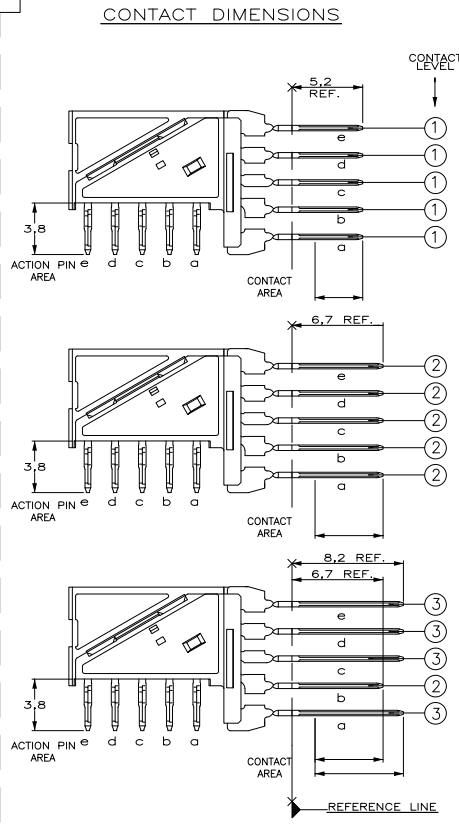
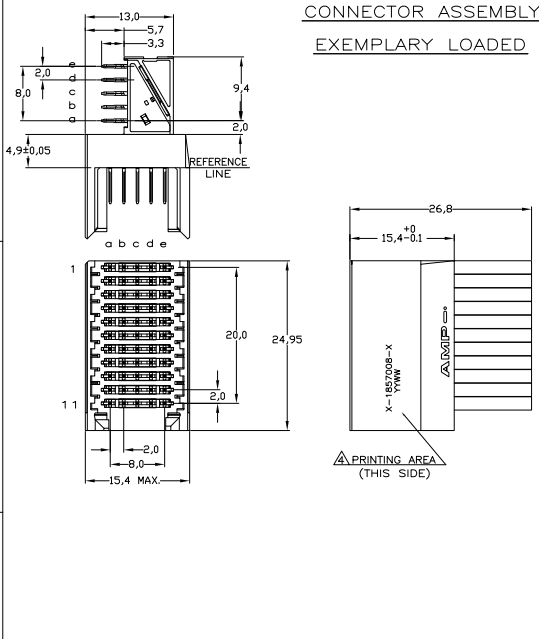
4

3

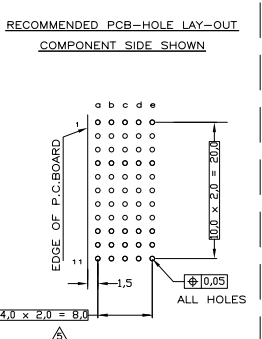
2

1

THIS DRAWING IS UNPUBLISHED. RELEASED FOR PUBLICATION.
 © COPYRIGHT BY TYCO ELECTRONICS CORPORATION. ALL RIGHTS RESERVED.



LOC	DIST	REVISIONS			
F	LR	DESCRIPTION	DATE	BY	APP
A		EH10-0247-05	22FEB05	B.M.	J.B.
B		ECR-10-018652	10SEP10	JS	MQW



CONTACT LAYOUT

	a	b	c	d	e
1	2	2	2	2	2
2	2	2	2	2	2
3	3	2	3	3	3
4	1	1	1	1	1
5	1	1	1	1	1
6	1	1	1	1	1
7	1	1	1	1	1
8	1	1	1	1	1
9	1	1	1	1	1
10	3	2	3	3	3
11	1	1	1	1	1

GUIDING

NOTES:

- △ MATERIAL CONTACT; PHOSPHORBRONZE
- △ MATERIAL HOUSING; GLASSFILLED POLYESTER (GRAY) UL-RATING 49V0
- △ GENERAL PLATING SPECIFICATION: UNDERPLATING (ENTIRE CONTACT); 1,27µm NICKEL MIN. AND ACTION PIN; 0,5µm TIN MIN. FOR PLATING OF MATING SURFACES SEE APPLICABLE SPECIFICATION REFERENCE FOR EACH DASH NUMBER.
- △ CONFORMS TO ALL TESTING ACCORDING IEC 61076-4-101 PERFORMANCE LEVEL 2.
- △ CONNECTOR MARKED WITH PARTNUMBER AND DATECODE.
- △ PLATED-THROUGH HOLES AT 2x2mm SQUARE GRID. 55 HOLES.

P.C.B. HOLE DIM. ACTION PIN
 FOR DETAILS SEE APPLICATION SPECIFICATION

CONTACT FINISH	MATERIAL	PART NUMBER
△	△	1857008-1

Tyco Electronics Corporation
 's-Hertogenbosch, 5222AR-32
Z-PACK 2mm HM TYPE C
55 POS. RIGHT ANGLE MALE
CONNECTOR ASSEMBLY

SIZE	QTY CODE	DRAWING NO.	RESTRICTED TO
A2	00779	C=1857008	

CUSTOMER DRAWING SCALE - SHEET 1 of 1 REV B

THIS DRAWING IS A CONTROLLED DOCUMENT.

DIMENSIONS:	TOLERANCES UNLESS OTHERWISE SPECIFIED:	DATE
mm		21FEB05
Ø	±0.2	21FEB05
FINISH		21FEB05

DW: B. Mooij
 CHK: B. Mooij
 D: J. Broeksteeg
 PRODUCT SPEC: 108-19082
 APPLICATION SPEC: 114-19029
 WEIGHT: -
 CUSTOMER DRAWING

AMP 1471-9 REV 31MM2000

C-1857008

A