

4

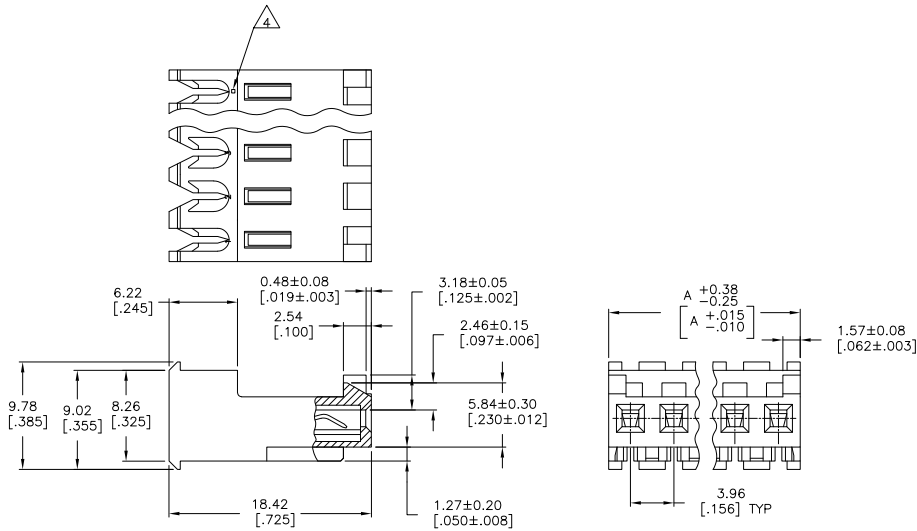
3

2

1

THIS DRAWING IS UNPUBLISHED. RELEASED FOR PUBLICATION. ALL RIGHTS RESERVED.

LOC	DIST	REVISIONS		
F	LNK	DESCRIPTION	DATE	BY
CM	00			
	C1	REVISED PER ECO-11-015731	03AUG11	HMR SM



55.47	[2.184]	14	4-644720-4
51.51	[2.028]	13	4-644720-3
47.55	[1.872]	12	4-644720-2
43.59	[1.716]	11	4-644720-1
39.62	[1.560]	10	4-644720-0
35.66	[1.404]	9	3-644720-9
31.70	[1.248]	8	3-644720-8
27.74	[1.092]	7	3-644720-7
23.77	[.936]	6	3-644720-6
19.81	[.780]	5	3-644720-5
15.85	[.624]	4	3-644720-4
11.89	[.468]	3	3-644720-3
7.92	[.312]	2	3-644720-2
55.47	[2.184]	14	4-644720-4
51.51	[2.028]	13	4-644720-3
47.55	[1.872]	12	4-644720-2
43.59	[1.716]	11	4-644720-1
39.62	[1.560]	10	4-644720-0
35.66	[1.404]	9	644720-9
31.70	[1.248]	8	644720-8
27.74	[1.092]	7	644720-7
23.77	[.936]	6	644720-6
19.81	[.780]	5	644720-5
15.85	[.624]	4	644720-4
11.89	[.468]	3	644720-3
7.92	[.312]	2	644720-2
DIM A		NO OF CIRCUITS	PART NO

7
SUPERSEDED

7
SUPERSEDED

- 1. MATERIAL: CONNECTOR - NYLON UL94V-2 (RED).
CONTACTS - 0.30[.012] THICK COPPER ALLOY
0.00076[.000030] GOLD THK OR 0.00008[.000003] MIN THK
GOLD FLASH OVER 0.00068[.000027] THK PALLADIUM NICKEL,
PER TE CONNECTIVITY'S DISCRETION, IN CONTACT
AREA WITH BRIGHT TIN-LEAD FOR 644720-2 THRU
1-644720-4, MATTE WHISKER MITIGATED TIN FOR
3-644720-2 THRU 4-644720-4 OVER NICKEL
UNDERPLATE.
- 2. CONTACTS ACCEPT 22 AWG WIRE WITH 2.41[.095] MAX INSULATION DIAMETER.
- 3. CONTACTS MUST ACCEPT 1.14±0.03[.045±.001] SQUARE POST AND REMAIN LOCKED IN POSITION.
- 4. IDENTIFICATION NUMBER FOR LAST CIRCUIT MAY NOT APPEAR ON ALL ASSEMBLIES.
- 5. DIMENSIONS IN BRACKETS ARE IN INCHES.
- 6. HOUSING FEATURES ARE: FEED-THRU WITH LOCKING RAMP AND POLARIZING TAB.
- 7. OBSOLETE PARTS: OBSOLETE CIS STREAMLINING PER D.RENAUD/D.SINISI



THIS DRAWING IS A CONTROLLED DOCUMENT.

DIMENSIONS: mm [INCHES]	DESIGNED BY: S. LEWIS 24 AUG 95	DATE: 24 AUG 95	TE Connectivity
TOLERANCES UNLESS OTHERWISE SPECIFIED:	CHK: S. LEWIS 24 AUG 95	DATE: 24 AUG 95	TE Connectivity
0 PLG ± .005	APP'D: D. CLARK	DATE: 24 AUG 95	TE Connectivity
1 PLG ± .005	PRODUCT SPEC: 108-1051		TE Connectivity
2 PLG ± .005	APPLICATION SPEC: 114-1020		TE Connectivity
3 PLG ± 0.13 [005]	WEIGHT: -		TE Connectivity
4 PLG ± .005			TE Connectivity
ANGLES ± .005			TE Connectivity
FINISH			TE Connectivity

MATERIAL: NYLON UL94V-2 (RED)
FINISH: POLARIZING TAB

CUSTOMER DRAWING

SIZE: 00779 C=644720
SCALE: 4:1 SHEET: 1 of 1 REV: C1