

4

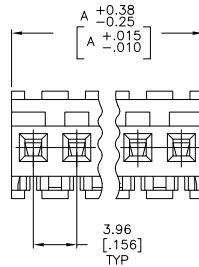
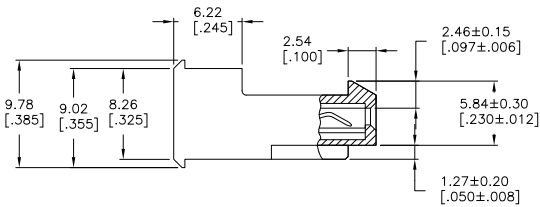
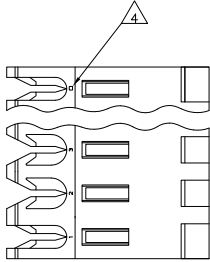
3

2

1

THIS DRAWING IS UNPUBLISHED. RELEASED FOR PUBLICATION. ALL RIGHTS RESERVED.

LOC	DIST	REVISIONS		
F	LNK	DESCRIPTION	DATE	BY
CM	00	K1	REVISED PER ECO-11-015731	03AUG11 HMR SM



1 MATERIAL: CONNECTOR - NYLON UL94V-2 (WHITE).  
 CONTACTS - 0.30[.012] THICK COPPER ALLOY  
 0.00076[.000030] GOLD THK OR 0.00008[.000003] MIN THK  
 GOLD FLASH OVER 0.00068[.000027] THK PALLADIUM NICKEL.  
 PER TE CONNECTIVITY'S DISCRETION. IN CONTACT  
 AREA WITH BRIGHT TIN-LEAD FOR 641230-2 THRU  
 2-641230-4, MATTE WHISKER MITIGATED TIN FOR  
 3-641230-2 THRU 5-641230-4 OVER NICKEL  
 UNDERPLATE.

2. CONTACTS ACCEPT 24 AWG WIRE WITH 2.41[.095] MAX INSULATION DIAMETER.

3. CONTACTS MUST ACCEPT 1.14±.03 [.045±.001] SQUARE POST AND REMAIN LOCKED IN POSITION.

4 IDENTIFICATION NUMBER FOR LAST CIRCUIT MAY NOT APPEAR ON ALL ASSEMBLIES.

5. DIMENSIONS IN BRACKETS ARE IN INCHES.

6. HOUSING FEATURES ARE: FEED-THRU WITH LOCKING RAMP.

7 OBSOLETE PARTS: OBSOLETE CIS STREAMLINING PER D.RENAUD/D.SINISI

95.10	[3.744]	24	5-641230-4
91.14	[3.588]	23	5-641230-3
87.17	[3.432]	22	5-641230-2
83.21	[3.276]	21	5-641230-1
79.25	[3.120]	20	5-641230-0
75.29	[2.964]	19	4-641230-9
71.32	[2.808]	18	4-641230-8
67.36	[2.652]	17	4-641230-7
63.40	[2.496]	16	4-641230-6
59.44	[2.340]	15	4-641230-5
55.47	[2.184]	14	4-641230-4
51.51	[2.028]	13	4-641230-3
47.55	[1.872]	12	4-641230-2
43.59	[1.716]	11	4-641230-1
39.62	[1.560]	10	4-641230-0
35.66	[1.404]	9	3-641230-9
31.70	[1.248]	8	3-641230-8
27.74	[1.092]	7	3-641230-7
23.77	[.936]	6	3-641230-6
19.81	[.780]	5	3-641230-5
15.85	[.624]	4	3-641230-4
11.89	[.468]	3	3-641230-3
7.92	[.312]	2	3-641230-2
95.10	[3.744]	24	2-641230-4
91.14	[3.588]	23	2-641230-3
87.17	[3.432]	22	2-641230-2
83.21	[3.276]	21	2-641230-1
79.25	[3.120]	20	2-641230-0
75.29	[2.964]	19	1-641230-9
71.32	[2.808]	18	1-641230-8
67.36	[2.652]	17	1-641230-7
63.40	[2.496]	16	1-641230-6
59.44	[2.340]	15	1-641230-5
55.47	[2.184]	14	1-641230-4
51.51	[2.028]	13	1-641230-3
47.55	[1.872]	12	1-641230-2
43.59	[1.716]	11	1-641230-1
39.62	[1.560]	10	1-641230-0
35.66	[1.404]	9	641230-9
31.70	[1.248]	8	641230-8
27.74	[1.092]	7	641230-7
23.77	[.936]	6	641230-6
19.81	[.780]	5	641230-5
15.85	[.624]	4	641230-4
11.89	[.468]	3	641230-3
7.92	[.312]	2	641230-2

1  
2  
3  
4  
5  
6  
7  
8  
9  
10  
11  
12  
13  
14  
15  
16  
17  
18  
19  
20  
21  
22  
23  
24  
25  
26  
27  
28  
29  
30  
31  
32  
33  
34  
35  
36  
37  
38  
39  
40  
41  
42  
43  
44  
45  
46  
47  
48  
49  
50  
51  
52  
53  
54  
55  
56  
57  
58  
59  
60  
61  
62  
63  
64  
65  
66  
67  
68  
69  
70  
71  
72  
73  
74  
75  
76  
77  
78  
79  
80  
81  
82  
83  
84  
85  
86  
87  
88  
89  
90  
91  
92  
93  
94  
95  
96  
97  
98  
99  
100



THIS DRAWING IS A CONTROLLED DOCUMENT.

DIMENSIONS: mm [INCHES]	TOLERANCES UNLESS OTHERWISE SPECIFIED:	DRN: S. LEWIS 12 MAR 98	CHK: R. SWING 12 MAR 98	APD: D. CLARK 12 MAR 98	NAME: MTA-156 CONNECTOR ASSEMBLY, 24 AWG, STANDARD
0 PLC ± -	1 PLC ± -	2 PLC ± -	3 PLC ± -	4 PLC ± -	ANGLE ± -
MATERIAL: 1	FINISH: 1	APPLICATION SPEC: 114-1020	WEIGHT: -	SIZE: A2	CAGE CODE: 00779
CUSTOMER DRAWING				SCALE: 4:1	SHEET: 1 of 1

NO OF CIRCUITS: DIM A PART NO

TE Connectivity

RESTRICTED TO: K1