

4

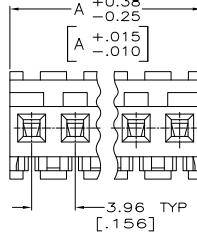
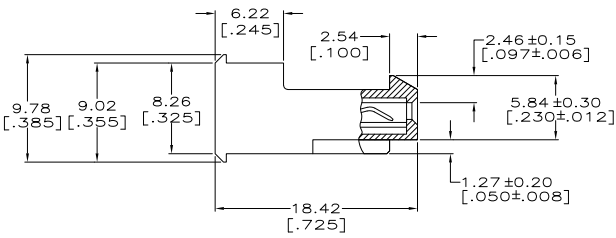
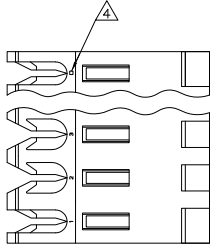
3

2

1

THIS DRAWING IS UNPUBLISHED. RELEASED FOR PUBLICATION. ALL RIGHTS RESERVED.

LOC	DIST	REVISIONS		
F	LR	DESCRIPTION	DATE	BY
CM	0			
	L1	REVISED PER ECO-11-015731	03AUG11	HMR SM



MATERIAL:
 CONNECTOR - NYLON UL94V-2 (ORANGE).
 CONTACTS - 0.30[.012] THICK COPPER ALLOY.
 PLATING - 0.00038[.000015] GOLD THK OR 0.00008[.000003] MIN THK GOLD FLASH OVER 0.00030[.000012] THK PALLADIUM NICKEL, PER TE CONNECTIVITY'S DISCRETION, IN CONTACT AREA.
 0.00203[.000080] MIN THICKNESS BRIGHT TIN LEAD IN SLOT AREA FOR 641168-2 THRU 2-641168-4 OR MATTE WHISKER MITIGATED TIN IN SLOT AREA FOR 3-641168-2 THRU 5-641168-4 OVER NICKEL UNDERPLATE.

OBsolete PARTS: OBsolete CIS STREAMLINING PER D.RENAUD/D.SINISI

- CONTACTS ACCEPT 18 AWG WIRE WITH 2.41[.095] MAX INSULATION DIAMETER.
- CONTACTS MUST ACCEPT 1.14±0.03[.045±.001] SQUARE POST AND REMAIN LOCKED IN POSITION.
- IDENTIFICATION NUMBER FOR LAST CIRCUIT MAY NOT APPEAR ON ALL ASSEMBLIES.
- DIMENSIONS IN BRACKETS ARE IN INCHES.
- HOUSING FEATURES ARE: FEED-THRU WITH LOCKING RAMP.
- NOTE DELETED.
- NOTE DELETED.



CONTACT FINISH	DIM A	NO. OF CIRCUITS	PART NO.
TIN	95.10 [3.744]	24	5-641168-4
TIN	91.14 [3.588]	23	5-641168-3
TIN	87.17 [3.432]	22	5-641168-2
TIN	83.21 [3.276]	21	5-641168-1
TIN	79.25 [3.120]	20	5-641168-0
TIN	75.29 [2.964]	19	4-641168-9
TIN	71.32 [2.808]	18	4-641168-8
TIN	67.36 [2.652]	17	4-641168-7
TIN	63.40 [2.496]	16	4-641168-6
TIN	59.44 [2.340]	15	4-641168-5
TIN	55.47 [2.184]	14	4-641168-4
TIN	51.51 [2.028]	13	4-641168-3
TIN	47.55 [1.872]	12	4-641168-2
TIN	43.59 [1.716]	11	4-641168-1
TIN	39.62 [1.560]	10	4-641168-0
TIN	35.66 [1.404]	9	3-641168-9
TIN	31.70 [1.248]	8	3-641168-8
TIN	27.74 [1.092]	7	3-641168-7
TIN	23.77 [0.936]	6	3-641168-6
TIN	19.81 [0.780]	5	3-641168-5
TIN	15.85 [0.624]	4	3-641168-4
TIN	11.89 [0.468]	3	3-641168-3
TIN	7.92 [0.312]	2	3-641168-2
TIN-LEAD	95.10 [3.744]	24	2-641168-4
TIN-LEAD	91.14 [3.588]	23	2-641168-3
TIN-LEAD	87.17 [3.432]	22	2-641168-2
TIN-LEAD	83.21 [3.276]	21	2-641168-1
TIN-LEAD	79.25 [3.120]	20	2-641168-0
TIN-LEAD	75.29 [2.964]	19	1-641168-9
TIN-LEAD	71.32 [2.808]	18	1-641168-8
TIN-LEAD	67.36 [2.652]	17	1-641168-7
TIN-LEAD	63.40 [2.496]	16	1-641168-6
TIN-LEAD	59.44 [2.340]	15	1-641168-5
TIN-LEAD	55.47 [2.184]	14	1-641168-4
TIN-LEAD	51.51 [2.028]	13	1-641168-3
TIN-LEAD	47.55 [1.872]	12	1-641168-2
TIN-LEAD	43.59 [1.716]	11	1-641168-1
TIN-LEAD	39.62 [1.560]	10	1-641168-0
TIN-LEAD	35.66 [1.404]	9	641168-9
TIN-LEAD	31.70 [1.248]	8	641168-8
TIN-LEAD	27.74 [1.092]	7	641168-7
TIN-LEAD	23.77 [0.936]	6	641168-6
TIN-LEAD	19.81 [0.780]	5	641168-5
TIN-LEAD	15.85 [0.624]	4	641168-4
TIN-LEAD	11.89 [0.468]	3	641168-3
TIN-LEAD	7.92 [0.312]	2	641168-2

SUPERSEDED (9)

SUPERSEDED (8)

SUPERSEDED (7)

THIS DRAWING IS A CONTROLLED DOCUMENT. DIM B. LEWIS 2-12-91

DIMENSIONS: DIM C. SWING 2-20-91

0 PLG ± -

1 PLG ± -

2 PLG ± -

3 PLG ± 0.13 [0.05]

4 PLG ± -

ANGLES ± -

FINISH

PRODUCT SPEC: 108-1051

APPLICATION SPEC: 114-1020

WEIGHT: -

MATERIAL: -

TE Connectivity

MTA-156 CONNECTOR ASSEMBLY, 18 AWG, STANDARD

SIZE: A2

ONE CODE: 00779

DRAWING NO: C=641168

RESTRICTED TO: -

CUSTOMER DRAWING

SCALE: 4:1

SHEET: 1 of 1

REV: L1