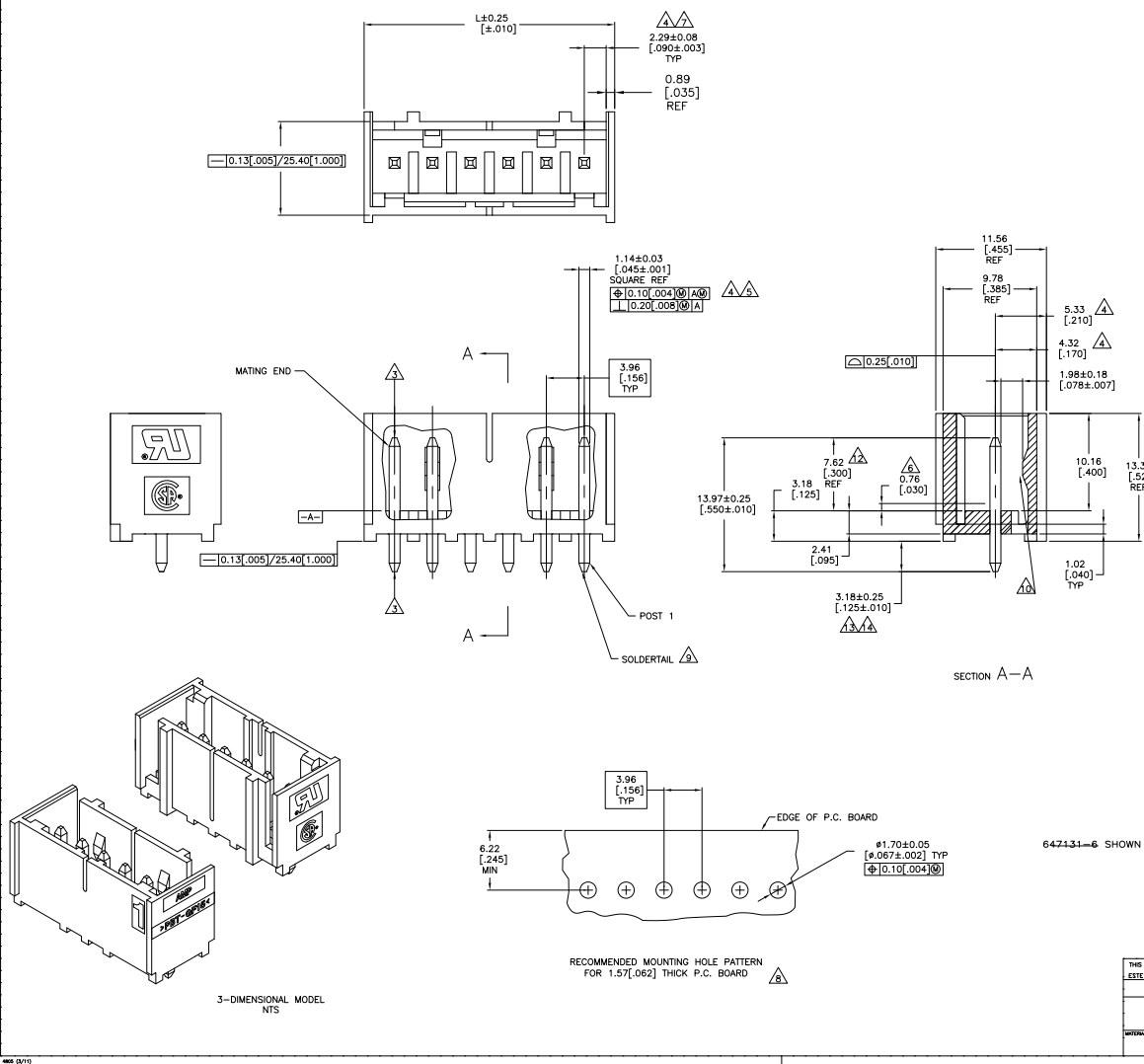


REV	DATE	DESCRIPTION	BY	CHK
0		REVISED PER EDD-11-016326		
1				



- △ MATERIAL:
HOUSING - THERMOPLASTIC POLYESTER, GLASS FILLED, UL94-0.
POST - COPPER ALLOY.
- △ FINISH:
HOUSING - BLACK
POST - SEE NOTES 12, 13 AND 14 FOR PLATING.
- △ POST TO WITHSTAND 3LBS (16N) MIN AXIAL FORCE IN THIS DIRECTION WITHOUT DISLODGING.
- △ APPLIES AT -A-
- △ APPLIES WHEN HEADER IS STRAIGHT.
- △ PLASTIC PROJECTIONS PERMITTED IN THIS ZONE.
- △ COORDINATE DIMENSIONS APPLIES FROM CENTER OF ACTUAL FEATURE.
- △ SOLDER SIDE OF BOARD IS SHOWN.
- △ POST SOLDERTAIL MUST COMPLY WITH AMP SOLDERABILITY SPEC 109-11-2.
- △ LATCH DETENT FEATURE APPEARS 1 PLACE ON EACH END OF PART (MAX OF 2 PER PART) ON ALL POSITIONS 4 THRU 12. THE LATCH APPEARS ONLY ONE PLACE ON 2 & 3 POSITION PARTS.
- △ DIMENSIONS IN BRACKETS ARE IN INCHES.
- △ PLATING: GOLD PLATE AREA, 0.0007[.000030] GOLD OR 0.00008[.000003] MIN GOLD FLASH OVER 0.0006[.000027] PALLADIUM NICKEL, PER TE CONNECTIVITY'S DISCRETION, ALL SIDES, OVER NICKEL UNDERPLATE, 0.0012[.000050] MIN, ALL SIDES AND ENTIRE LENGTH OF POST.
- △ BRIGHT TIN LEAD (93/7) PLATE AREA 0.00381 - 0.0089 [.000150 - .000350] ALL FOUR SIDES, 3.18 [.125] MIN.
- △ MATTE TIN PLATE AREA 0.00381 - 0.0089 [.000150 - .000350] ALL FOUR SIDES, 3.18 [.125] MIN.
- △ OBSOLETE PARTS: OBSOLETE CIS STREAMLINING PER D.RENAUD/D.SINISI

REV	DATE	DESCRIPTION	BY	CHK
49.94	1.966	12	3-647131-2	
45.97	1.810	11	3-647131-1	
42.01	1.654	10	3-647131-0	
38.05	1.498	9	2-647131-9	
34.09	1.342	8	2-647131-8	
30.12	1.186	7	2-647131-7	
26.16	1.030	6	2-647131-6	
22.20	.874	5	2-647131-5	
18.24	.718	4	2-647131-4	
14.27	.562	3	2-647131-3	
10.31	.406	2	2-647131-2	
49.94	1.966	12	1-647131-2	
45.97	1.810	11	1-647131-1	
42.01	1.654	10	1-647131-0	
38.05	1.498	9	1-647131-9	
34.09	1.342	8	1-647131-8	
30.12	1.186	7	1-647131-7	
26.16	1.030	6	1-647131-6	
22.20	.874	5	1-647131-5	
18.24	.718	4	1-647131-4	
14.27	.562	3	1-647131-3	
10.31	.406	2	1-647131-2	

PLATING	MM	IN	NO OF POSN	PART NUMBER
647131-6 SHOWN				

THIS DRAWING IS A CONTROLLED DOCUMENT.
 ESTE PLANO ES UN DOCUMENTO CONTROLADO.

TE Connectivity
 MTA-156 SHROUDED HEADER
 ASSEMBLY, STRAIGHT, 94S SQUARE
 POST, 0.00030 GOLD/70 RETENTION PEG

REV: 000779 (Q)=647131