

4

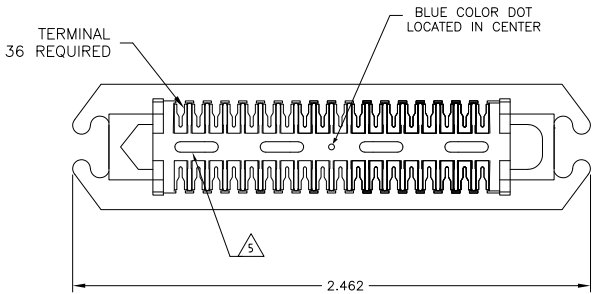
3

2

1

THIS DRAWING IS UNPUBLISHED. RELEASED FOR PUBLICATION. BY TYCO ELECTRONICS CORPORATION. ALL INTERNATIONAL RIGHTS RESERVED.

LOC		DIBT		REVISIONS			
GP	00	P	LTR	DESCRIPTION	DATE	BY	APPD
		M		REVISED PER ECO-08-007327	13OCT08	BM	WM

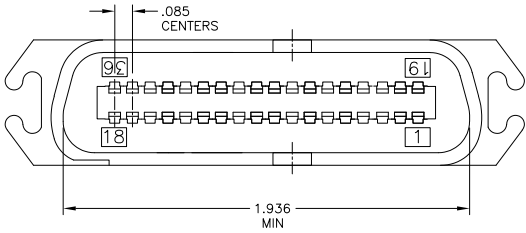
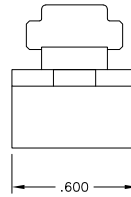
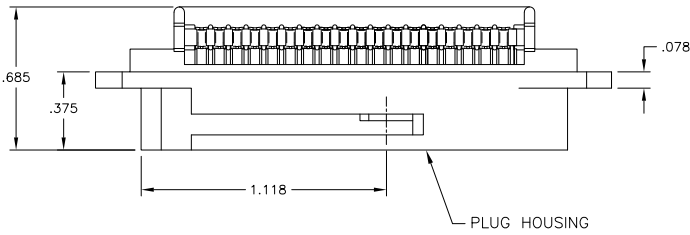


1. THE CONTACT SURFACES OF THE TERMINALS ARE COATED WITH LUBRICANT.
2. ALL DIMENSIONS SHOWN ARE FOR REFERENCE ONLY UNLESS OTHERWISE SPECIFIED.

⚠ MATERIAL:
 HOUSING - THERMOPLASTIC (BLACK)
 TERMINALS - HIGH STRENGTH COPPER ALLOY PLATED WITH .000030 MIN GOLD OR GOLD FLASH OVER PALLADIUM NICKEL PLATE, .000030 MIN TOTAL ON MATING SURFACE. .000050 MIN NICKEL UNDERPLATE OVER ENTIRE TERMINAL.

4. WIRE SIZE: 24 & 26 AWG SOLID & 24 AWG 7 STRANDS OF COPPER CONDUCTORS. MAX INSULATION DIAMETER OF .045 IS ACCEPTABLE FOR MOST APPLICATIONS.

⚠ CORING MAY OR MAY NOT APPEAR AND IS AT THE DISCRETION OF TYCO ELECTRONICS.



552274-1 PART NUMBER

THIS DRAWING IS A CONTROLLED DOCUMENT.		DR. DL DRUMMOND 06-JUN-00	Tyco Electronics Corporation	
		CHK. DL DRUMMOND 06-JUN-00	Harrisburg, PA 17105-3608	
DIMENSIONS: INCHES		APPD. DL DRUMMOND 06-JUN-00	NAME	
OTHER DIMENSIONS: MILLIMETERS		E.W. BELLES		
0 PLC		PRODUCT SPEC		
1 PLC		APPLICATION SPEC		
2 PLC		SIZE		
3 PLC		CASE CODE		
4 PLC		DRAWING NO.		
ANGLES		RESTRICTED TO		
FINISH		WEIGHT		
MATERIAL		A2 00779 C-552274		
FINISH		CUSTOMER DRAWING		
		SCALE		
		NTS		
		SHEET 1 of 1		
		REV M		