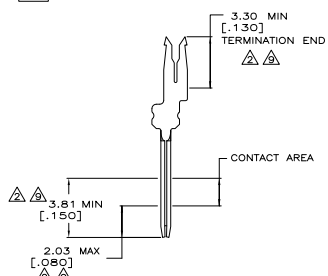
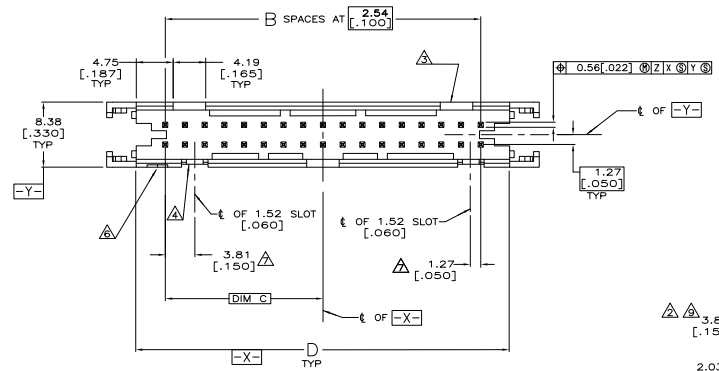
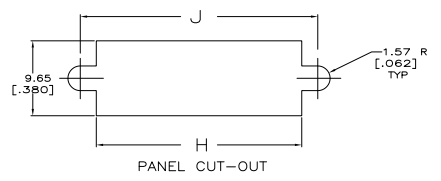
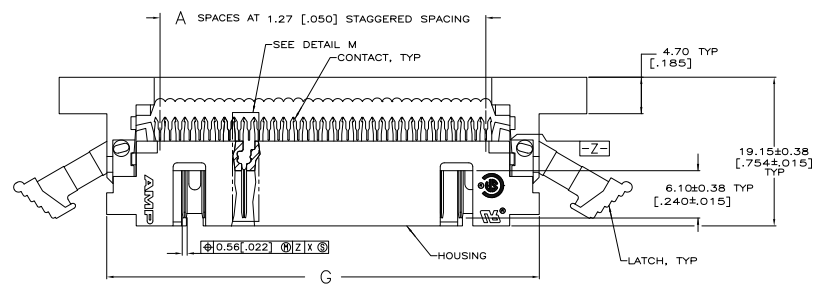
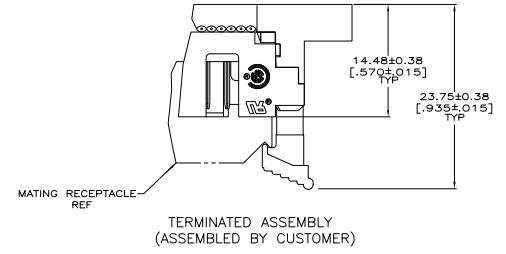
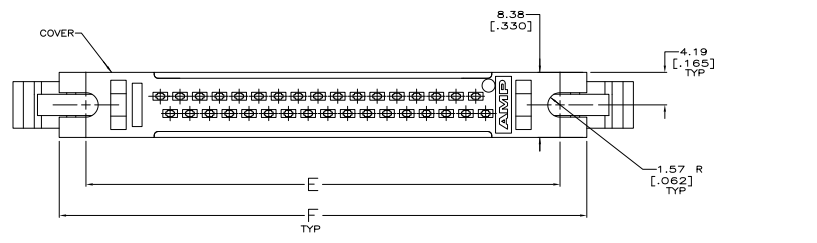


THIS DRAWING IS UNPUBLISHED
 ALL RIGHTS RESERVED

REV	DATE	DESCRIPTION	BY	APP
00				
01		REVISED PER EDD-11-610351		



COVER AND LATCH NOT SHOWN IN THIS VIEW FOR CLARITY

THIS DRAWING IS A CONTROLLED DOCUMENT.		REFERENCE	SWAN	TE Connectivity	
UNLESS OTHERWISE SPECIFIED:	UNLESS OTHERWISE SPECIFIED:	UNLESS OTHERWISE SPECIFIED:	UNLESS OTHERWISE SPECIFIED:	UNLESS OTHERWISE SPECIFIED:	UNLESS OTHERWISE SPECIFIED:
DIMENSIONS (IN INCHES)	FINISHES	PLATING	WARRANTY	DATE	REVISIONS
DECIMALS	AS SPECIFIED	AS SPECIFIED	AS SPECIFIED	AS SPECIFIED	AS SPECIFIED
FRACTIONS	AS SPECIFIED	AS SPECIFIED	AS SPECIFIED	AS SPECIFIED	AS SPECIFIED
ANGLES	AS SPECIFIED	AS SPECIFIED	AS SPECIFIED	AS SPECIFIED	AS SPECIFIED
SPACES	AS SPECIFIED	AS SPECIFIED	AS SPECIFIED	AS SPECIFIED	AS SPECIFIED
SEE SHEET 1	SEE SHEET 1	SEE SHEET 1	SEE SHEET 1	SEE SHEET 1	SEE SHEET 1
CUSTOMER DRAWING		DATE	00779	REV	1

488 (2/11)

THIS DRAWING IS UNAPPROVED FOR PRODUCTION
 ALL RIGHTS RESERVED

REV	DATE	DESCRIPTION	BY	CHK	APP
00		SEE SHEET 1			

- △ FLAME RETARDANT 94V-0 RATED THERMOPLASTIC; BLACK.
- △ 2.54µm [.000100] MIN BRIGHT TIN-LEAD ON TERMINATION END, 0.76µm [.000030] MIN GOLD ON CONTACT AREA, ALL OVER 1.27µm [.000050] MIN NICKEL.
- △ NO SLOT ON THIS END FOR 10 POSITION HOUSINGS.
- △ NO SLOT FOR SNAP-IN POLARIZER ON THIS END FOR 10 AND 14 POSITION HOUSINGS.
- 5. FOR MILITARY POLARIZATION, ORDER SNAP-IN POLARIZER 499991-2 (BULK PACK OF 50).
- △ POSITION NO 1 INDICATOR.
- △ COORDINATE DIMENSION APPLIES FROM CENTER OF ACTUAL FEATURE.
- △ PHOSPHOR BRONZE PER QQ-B-750.
- △ 2.54µm [.000100] MIN MATTE TIN ON TERMINATION END, 0.76µm [.000030] MIN GOLD ON CONTACT AREA, ALL OVER 1.27µm [.000050] MIN NICKEL.
- OR
- △ GOLD FLASH OVER PALLADIUM-NICKEL 0.76µm [.000030] TOTAL ON CONTACT AREA, 2.54µm [.000100] MIN MATTE TIN ON TERMINATION END, ALL OVER 1.27µm [.000050] MIN NICKEL.
- △ OBSOLETE.
- △ OBSOLETE PARTS: OBSOLETE CIS STREAMLINING PER D.RENAUD/D.SINISI.

△	99.16	95.05	93.78	106.07	99.16	86.21	39.37	31	63	64	2-111494-6
△	[3.904]	[3.742]	[3.692]	[4.176]	[3.904]	[3.394]	[1.550]				
△	94.08	89.97	86.70	100.99	94.08	81.13	36.83	29	59	60	2-111494-5
△	[3.704]	[3.542]	[3.492]	[3.976]	[3.704]	[3.194]	[1.450]				
△	81.38	77.27	68.38	88.29	81.38	68.43	30.48	24	49	50	2-111494-4
△	[3.204]	[3.042]	[2.992]	[3.476]	[3.204]	[2.694]	[1.200]				
△	73.76	69.65	68.38	80.67	73.76	60.81	26.67	21	43	44	2-111494-3
△	[2.904]	[2.742]	[2.692]	[3.176]	[2.904]	[2.394]	[1.050]				
△	68.68	64.57	63.30	75.59	68.68	55.73	24.13	19	39	40	2-111494-2
△	[2.704]	[2.542]	[2.492]	[2.976]	[2.704]	[2.194]	[.950]				
△	61.06	56.95	55.68	67.97	61.06	48.11	20.32	16	33	34	2-111494-1
△	[2.404]	[2.242]	[2.192]	[2.676]	[2.404]	[1.894]	[.800]				
△	55.98	51.87	50.60	62.89	55.98	43.03	17.78	14	29	30	2-111494-0
△	[2.204]	[2.042]	[1.992]	[2.476]	[2.204]	[1.694]	[.700]				
△	48.36	44.25	42.98	55.27	48.36	35.41	13.97	11	23	24	1-111494-9
△	[1.904]	[1.742]	[1.692]	[2.176]	[1.904]	[1.394]	[.550]				
△	43.28	39.17	37.90	50.19	43.28	30.33	11.43	9	19	20	1-111494-8
△	[1.704]	[1.542]	[1.492]	[1.976]	[1.704]	[1.194]	[.450]				
△	38.20	34.09	32.82	45.11	38.20	25.25	8.89	7	15	16	1-111494-7
△	[1.504]	[1.342]	[1.292]	[1.776]	[1.504]	[.994]	[.350]				
△	35.66	31.55	30.28	42.57	35.66	22.71	7.62	6	13	14	1-111494-6
△	[1.404]	[1.242]	[1.192]	[1.676]	[1.404]	[.894]	[.300]				
△	30.58	26.47	25.20	37.49	30.58	17.63	5.08	4	9	10	1-111494-5
△	[1.204]	[1.042]	[.992]	[1.476]	[1.204]	[.694]	[.200]				
△	50.90	46.79	45.52	57.81	50.90	37.95	15.24	12	25	26	1-111494-4
△	[2.004]	[1.842]	[1.792]	[2.276]	[2.004]	[1.494]	[.600]				
△	99.16	95.05	93.78	106.07	99.16	86.21	39.37	31	63	64	1-111494-3
△	[3.904]	[3.742]	[3.692]	[4.176]	[3.904]	[3.394]	[1.550]				
△	94.08	89.97	86.70	100.99	94.08	81.13	36.83	29	59	60	1-111494-2
△	[3.704]	[3.542]	[3.492]	[3.976]	[3.704]	[3.194]	[1.450]				
△	81.38	77.27	68.38	88.29	81.38	68.43	30.48	24	49	50	1-111494-1
△	[3.204]	[3.042]	[2.992]	[3.476]	[3.204]	[2.694]	[1.200]				
△	73.76	69.65	68.38	80.67	73.76	60.81	26.67	21	43	44	1-111494-0
△	[2.904]	[2.742]	[2.692]	[3.176]	[2.904]	[2.394]	[1.050]				
△	68.68	64.57	63.30	75.59	68.68	55.73	24.13	19	39	40	111494-9
△	[2.704]	[2.542]	[2.492]	[2.976]	[2.704]	[2.194]	[.950]				
△	61.06	56.95	55.68	67.97	61.06	48.11	20.32	16	33	34	111494-8
△	[2.404]	[2.242]	[2.192]	[2.676]	[2.404]	[1.894]	[.800]				
△	55.98	51.87	50.60	62.89	55.98	43.03	17.78	14	29	30	111494-7
△	[2.204]	[2.042]	[1.992]	[2.476]	[2.204]	[1.694]	[.700]				
△	50.90	46.79	45.52	57.81	50.90	37.95	15.24	12	25	26	111494-6
△	[2.004]	[1.842]	[1.792]	[2.276]	[2.004]	[1.494]	[.600]				
△	48.36	44.25	42.98	55.27	48.36	35.41	13.97	11	23	24	111494-5
△	[1.904]	[1.742]	[1.692]	[2.176]	[1.904]	[1.394]	[.550]				
△	43.28	39.17	37.90	50.19	43.28	30.33	11.43	9	19	20	111494-4
△	[1.704]	[1.542]	[1.492]	[1.976]	[1.704]	[1.194]	[.450]				
△	38.20	34.09	32.82	45.11	38.20	25.25	8.89	7	15	16	111494-3
△	[1.504]	[1.342]	[1.292]	[1.776]	[1.504]	[.994]	[.350]				
△	35.66	31.55	30.28	42.57	35.66	22.71	7.62	6	13	14	111494-2
△	[1.404]	[1.242]	[1.192]	[1.676]	[1.404]	[.894]	[.300]				
△	30.58	26.47	25.20	37.49	30.58	17.63	5.08	4	9	10	111494-1
△	[1.204]	[1.042]	[.992]	[1.476]	[1.204]	[.694]	[.200]				

SUPERCEDED
 SUPERCEDED
 SUPERCEDED

CONTACT FINISH	J	H	G	F	E	D	C	B	A	NO. OF POSN	PART NUMBER
----------------	---	---	---	---	---	---	---	---	---	-------------	-------------

THIS DRAWING IS A CONTROLLED DOCUMENT. DATE: 11-28-92
 M. HENNEY
 INCHES: (DIMENSIONS IN PARENTHESES)
 DECIMALS: .0005
 FRACTIONS: 1/16
 ANGLES: 1/2
 TOLERANCES: .0005
 SURF. FINISH: RA 1.6
 UNLESS OTHERWISE SPECIFIED
 PROJECT FILE: 108-1336
 DRAWING NO: 114-7011
 DATE: 11-28-92
 SIZE: A1
 CUSTOMER DRAWING
 UNIVERSAL I/O PIN CONNECTOR, WITH SLOTTED MOUNTING EARS, WITH STD COVER LATCHES, AMP-LATCH
 SEE TABLE
 100779
 111494
 4.1
 2
 2
 J