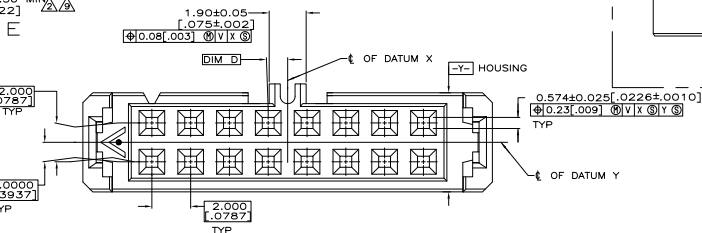
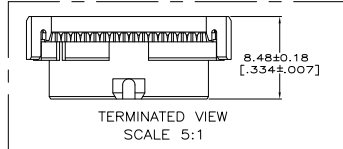
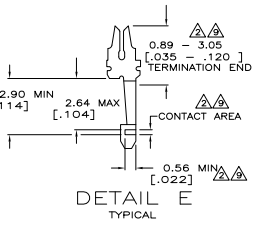
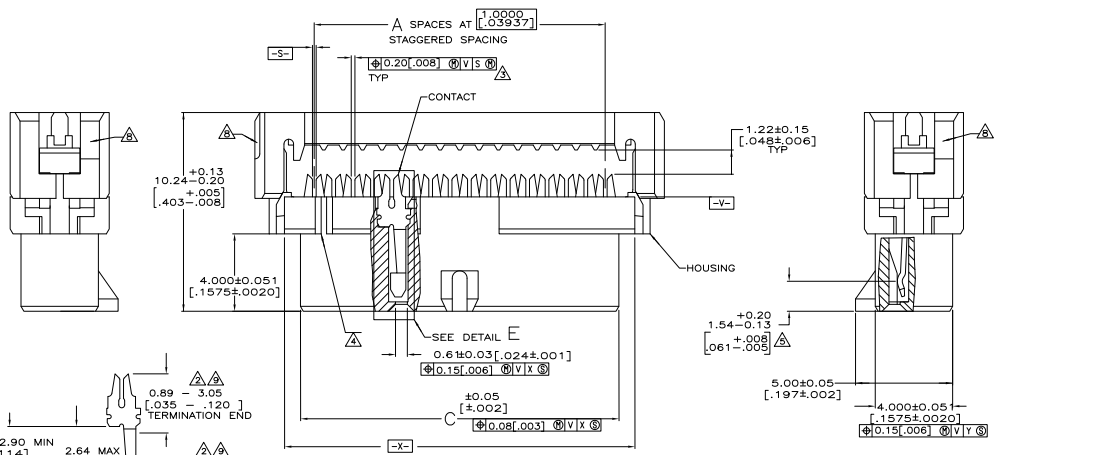
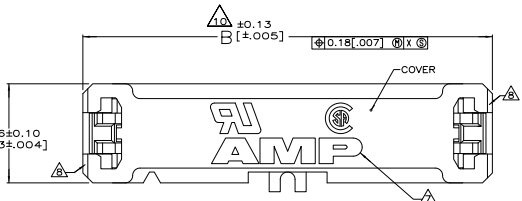


REV	DATE	DESCRIPTION	BY	APP
00				
01		REVISED PER EDD-11-005033		

- ▲ MOLDED PARTS: POLYESTER, UL RATED 94V-0, BLACK.
- ▲ CONTACTS: BERYLLIUM COPPER.
- ▲ 2.54µm [.00100] MIN TIN-LEAD ON TERMINATION END.
- ▲ 0.76µm [.000030] MIN GOLD ON CONTACT AREA, ALL OVER
- ▲ 1.27µm [.000050] MIN NICKEL.
- ▲ POSITION TOLERANCE APPLIES 0.76 [.030] ABOVE DATUM V.
- ▲ POSITION NUMBER 1 INDICATOR.
- ▲ ELECTRICAL ENGAGEMENT ZONE.
- 6. RECOMMENDED 28 AWG RIBBON CABLE, 0.61 - 0.97 [.024 - .038]
- ▲ THICK PVC, 1.0000[.03933] PITCH.
- ▲ AMP LOGO ORIENTATION IS OPTIONAL.
- ▲ RECESS ON EACH END, OPPOSITE CORNER.
- ▲ 0.13µm [.000005] MIN GOLD ON TERMINATION END.
- ▲ 0.76µm [.000030] MIN GOLD ON CONTACT AREA, ALL OVER
- ▲ 1.27µm [.000050] MIN NICKEL.
- ▲ MOLD GATE PROJECTION ON EITHER END OF COVER TO BE EXCLUDED FROM DIMENSION 'B' MEASUREMENT.



REV	DATE	DESCRIPTION	BY	APP
1	12	3-111623-1		
2	8	3-111623-0		
7	21	2-111623-9		
21	22	2-111623-8		
33	34	2-111623-7		
23	24	2-111623-6		
49	50	2-111623-5		
43	44	2-111623-4		
39	40	2-111623-3		
29	30	2-111623-2		
25	26	2-111623-1		
19	20	2-111623-0		
15	16	2-111623-9		
13	14	1-111623-9		
9	10	1-111623-8		
11	12	1-111623-7		
7	8	1-111623-6		
21	22	1-111623-5		
67	68	1-111623-4		
63	64	1-111623-3		
59	60	1-111623-2		
49	50	1-111623-1		
43	44	1-111623-0		
39	40	111623-9		
33	34	111623-8		
29	30	111623-7		
25	26	111623-6		
23	24	111623-5		
19	20	111623-4		
15	16	111623-3		
13	14	111623-2		
9	10	111623-1		

CONTACT FINISH	D	C	B	A	NO OF POSN	PART NO

THIS DRAWING IS A CONTROLLED DOCUMENT.	DATE	REV	DESCRIPTION

REVISIONS	DATE	BY	APP

REVISIONS	DATE	BY	APP