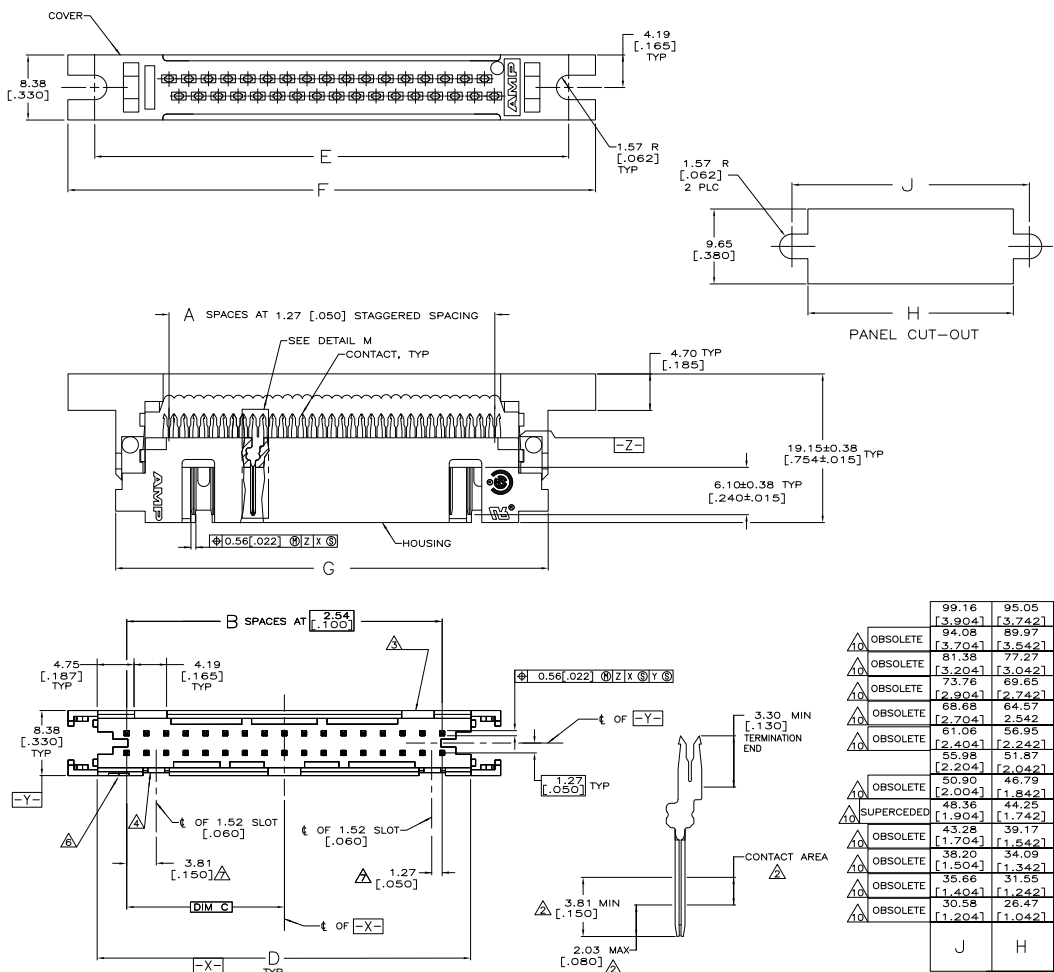
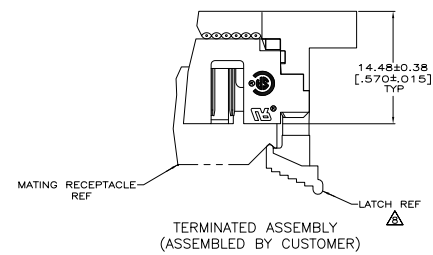


| REV   | DATE | DESCRIPTION               | BY | APP'D                    |
|-------|------|---------------------------|----|--------------------------|
| GP 00 |      |                           |    |                          |
| C     |      | REVISED PER EDD-11-610351 |    | 10/04/2011 C.J.V./D.W.R. |



- △ HOUSING AND COVER MATERIAL:  
FLAME RETARDANT 94V-0 RATED THERMOPLASTIC; BLACK.
- △ CONTACT FINISH:  
2.54µm [.000100] MIN BRIGHT TIN-LEAD ON TERMINATION END, 0.76µm [.000030] MIN GOLD ON CONTACT AREA, ALL OVER 1.27µm [.000050] MIN NICKEL.  
-OR-  
GOLD FLASH OVER PALLADIUM-NICKEL 0.76µm [.000030] TOTAL ON CONTACT AREA, 2.54µm [.000100] MIN BRIGHT TIN-LEAD ON TERMINATION END, ALL OVER 1.27µm [.000050] MIN NICKEL.
- △ NO SLOT ON THIS END FOR 10 POSITION HOUSINGS.
- △ NO SLOT FOR SNAP-IN POLARIZER ON THIS END FOR 10 AND 14 POSITION HOUSINGS.
- 5. FOR MILITARY POLARIZATION, ORDER SNAP-IN POLARIZER 499991-2 (BULK PACK OF 50).
- △ POSITION NO 1 INDICATOR.
- △ COORDINATE DIMENSION APPLIES FROM CENTER OF ACTUAL FEATURE.
- △ FOR LATCHES ORDER 111451, 2 PER ASSEMBLY.
- △ PHOSPHOR BRONZE PER QQ-B-750.
- △ OBSOLETE PARTS: OBSOLETE CIS STREAMLINING PER D.RENAUD/D.SINISI.



|              | 99.16   | 95.05   | 93.78   | 106.07  | 99.16   | 86.21   | 39.37   | 31 | 63 | 64 | 1-111448-3 |
|--------------|---------|---------|---------|---------|---------|---------|---------|----|----|----|------------|
| △ OBSOLETE   | [3.904] | [3.742] | [3.692] | [4.176] | [3.904] | [3.394] | [1.550] |    |    |    |            |
| △ OBSOLETE   | [3.704] | [3.542] | [3.492] | [3.976] | [3.704] | [3.194] | [1.450] | 29 | 59 | 60 | 1-111448-2 |
| △ OBSOLETE   | [3.204] | [3.042] | [2.992] | [3.476] | [3.204] | [2.694] | [1.200] | 24 | 49 | 50 | 1-111448-1 |
| △ OBSOLETE   | [2.904] | [2.742] | [2.692] | [3.176] | [2.904] | [2.394] | [1.050] | 21 | 43 | 44 | 1-111448-0 |
| △ OBSOLETE   | [2.704] | 2.542   | [2.492] | [2.976] | [2.704] | [2.194] | [.950]  | 19 | 39 | 40 | 111448-9   |
| △ OBSOLETE   | 61.06   | 56.95   | 55.68   | 67.97   | 61.06   | 48.11   | 20.32   | 16 | 33 | 34 | 111448-8   |
| △ OBSOLETE   | [2.404] | [2.242] | [2.192] | [2.676] | [2.404] | [1.894] | [.800]  |    |    |    |            |
| △ OBSOLETE   | [2.204] | [2.042] | [1.992] | [2.476] | [2.204] | [1.694] | [.700]  | 14 | 29 | 30 | 111448-7   |
| △ OBSOLETE   | 50.90   | 46.79   | 45.52   | 57.81   | 50.90   | 37.95   | 15.24   | 12 | 25 | 26 | 111448-6   |
| △ SUPERCEDED | [2.004] | [1.842] | [1.792] | [2.276] | [2.004] | [1.494] | [.600]  |    |    |    |            |
| △ OBSOLETE   | 48.36   | 44.25   | 42.98   | 55.27   | 48.36   | 35.41   | 13.97   | 11 | 23 | 24 | 111448-5   |
| △ OBSOLETE   | [1.904] | [1.742] | [1.692] | [2.176] | [1.904] | [1.394] | [.550]  |    |    |    |            |
| △ OBSOLETE   | [1.704] | [1.542] | [1.492] | [1.976] | [1.704] | [1.194] | [.450]  | 9  | 19 | 20 | 111448-4   |
| △ OBSOLETE   | [1.504] | [1.342] | [1.292] | [1.776] | [1.504] | [.994]  | [.350]  | 7  | 15 | 16 | 111448-3   |
| △ OBSOLETE   | 35.66   | 31.55   | 30.28   | 42.57   | 35.66   | 22.71   | 7.62    | 6  | 13 | 14 | 111448-2   |
| △ OBSOLETE   | 30.58   | 26.47   | 25.20   | 37.49   | 30.58   | 17.63   | 5.08    | 4  | 9  | 10 | 111448-1   |
| △ OBSOLETE   | [1.204] | [1.042] | [.992]  | [1.476] | [1.204] | [.694]  | [.200]  |    |    |    |            |

COVER NOT SHOWN  
 IN THIS VIEW  
 FOR CLARITY

DETAIL M  
 SCALE 8:1  
 TYPICAL

THIS DRAWING IS A CONTROLLED DOCUMENT. SEE EDD-11-610351 FOR MORE INFORMATION.

UNIVERSAL I/O PIN CONNECTOR, WITH SLOTTED MOUNTING EAR, SNAP-LATCH

114-7011

00779G=111448

CUSTOMER DRAWING