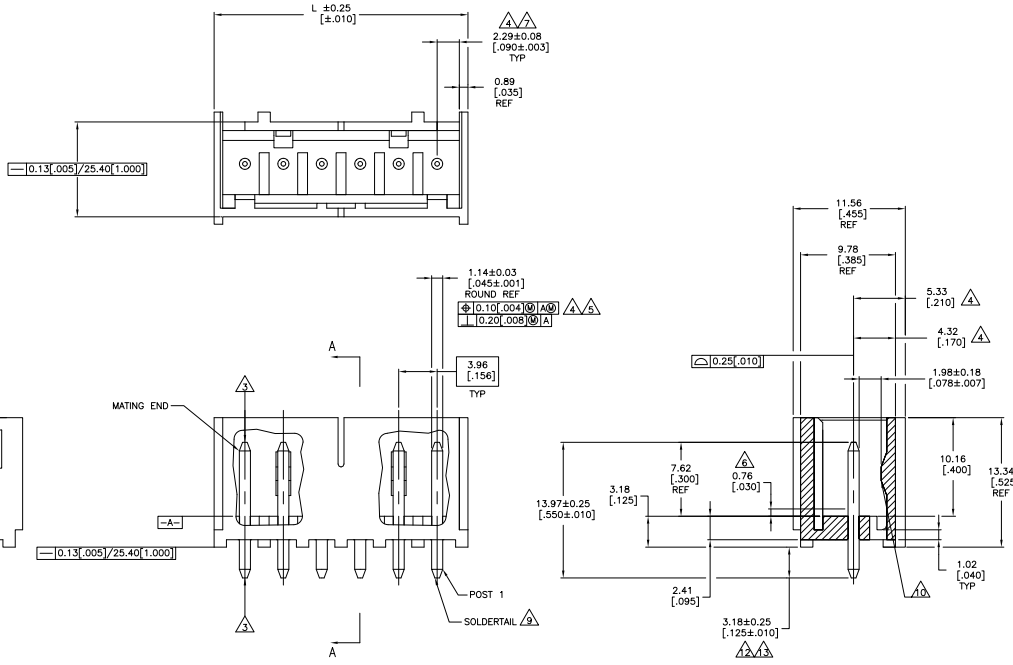
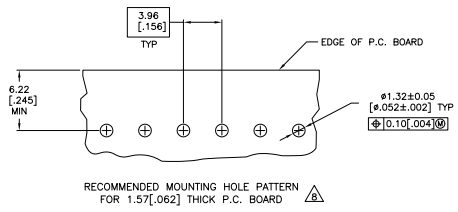
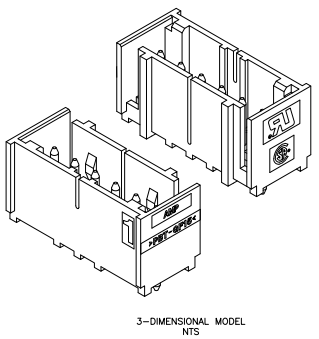


THIS DRAWING IS UNPUBLISHED. REPRODUCED FOR INFORMATION ONLY. ALL RIGHTS RESERVED.

REV	DATE	DESCRIPTION	BY	CHK	APP
00					
D	02 02 11 04		200205	BSV	DB
DT		REVISED PER ECO-09-021510	148209	KK	AE



- MATERIAL:
HOUSING - THERMOPLASTIC POLYESTER, GLASS FILLED, UL94-0.
POST - COPPER ALLOY
 - FINISH:
HOUSING - BLACK
POST - SEE NOTES 12 AND 13.
- △ POST TO WITHSTAND 3LBS (16N) MIN AXIAL FORCE IN THIS DIRECTION WITHOUT DISLOING.
 - △ APPLIES AT [A].
 - △ APPLIES WHEN HEADER IS STRAIGHT.
 - △ PLASTIC PROJECTIONS PERMITTED IN THIS ZONE.
 - △ COORDINATE DIMENSIONS APPLIES FROM CENTER OF ACTUAL FEATURE.
 - △ SOLDER SIDE OF BOARD IS SHOWN.
 - △ POST SOLDER TAIL MUST COMPLY WITH AMP SOLDERABILITY SPEC 109-11-2.
 - △ LATCH DETENT FEATURE APPEARS 1 PLACE ON EACH END OF PART (MAX OF 2 PER PART) ON ALL POSITIONS 4 THRU 12. THE LATCH APPEARS ONLY ONE PLACE ON 2 & 3 POSITION PARTS.
11. DIMENSIONS IN BRACKETS ARE IN INCHES.
- △ BRIGHT TIN LEAD (93/7) PLATE 0.00381 - 0.00889 [0.00150 - .000350] THICK, OVER NICKEL UNDERPLATE 0.00127 [0.000050] MIN THICK.
 - △ MATTE TIN PLATE 0.00381 - 0.00889 [0.00150 - .000350] THICK, OVER NICKEL UNDERPLATE 0.00127 [0.000050] MIN THICK.
 - △ OBSOLETE PARTS: OBSOLETE CIS STREAMLINING PER D.RENAUD/D.SINISI



REV	DATE	DESCRIPTION	BY	CHK	APP
49.94	1.966	12	3-647124-2		
45.97	1.810	11	3-647124-1		
42.01	1.654	10	3-647124-0		
38.05	1.498	9	2-647124-9		
34.09	1.342	8	2-647124-8		
30.12	1.186	7	2-647124-7		
26.16	1.030	6	2-647124-6		
22.20	.874	5	2-647124-5		
18.24	.718	4	2-647124-4		
14.27	.562	3	2-647124-3		
10.31	.406	2	2-647124-2		
49.94	1.966	12	1-647124-2		
45.97	1.810	11	1-647124-1		
42.01	1.654	10	1-647124-0		
38.05	1.498	9	647124-9		
34.09	1.342	8	647124-8		
30.12	1.186	7	647124-7		
26.16	1.030	6	647124-6		
22.20	.874	5	647124-5		
18.24	.718	4	647124-4		
14.27	.562	3	647124-3		
10.31	.406	2	647124-2		

THIS DRAWING IS A CONTROLLED DOCUMENT.		DATE	ISSUED	BY	FOR
DATE	ISSUED	BY	FOR		
DATE	ISSUED	BY	FOR		
DATE	ISSUED	BY	FOR		
DATE	ISSUED	BY	FOR		

DESCRIPTION	QUANTITY	UNIT	REVISION	DATE	BY	CHK	APP
MTA-156 SHROUDED HEADER ASSEMBLY, STRAIGHT CHAS ROUND POST, MIN/NO RETENTION POS							