

4

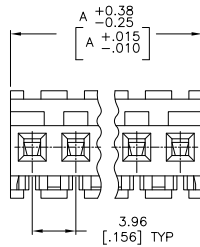
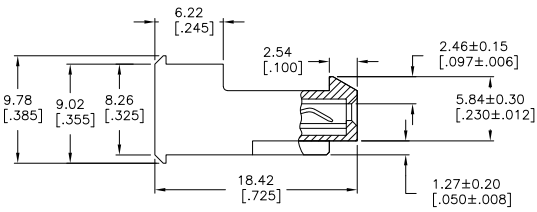
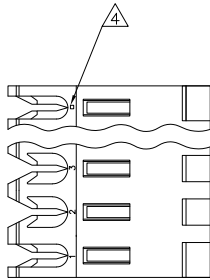
3

2

1

THIS DRAWING IS UNPUBLISHED. RELEASED FOR PUBLICATION. ALL RIGHTS RESERVED.

LOC	DIST	REVISIONS			
F	LNK	DESCRIPTION	DATE	BY	APPD
CM	00	S1	REVISED PER ECO-11-015731	03AUG11	HMR SM



- 1. MATERIAL: CONNECTOR - NYLON UL94V-2 (RED).
CONTACTS - 0.30[.012] THICK COPPER ALLOY
0.00076[.000030] GOLD THK OR 0.00008[.000003] MIN THK
GOLD FLASH OVER 0.00068[.000027] THK PALLADIUM NICKEL,
PER TE CONNECTIVITY'S DISCRETION. IN CONTACT
AREA WITH BRIGHT TIN-LEAD FOR 641229-2 THRU
2-641229-4, MATTE WHISKER MITIGATED TIN FOR
3-641229-2 THRU 5-641229-4 OVER NICKEL UNDERPLATE.
- 2. CONTACTS ACCEPT 22 AWG WIRE WITH 2.41[.095] MAX
INSULATION DIAMETER.
- 3. CONTACTS MUST ACCEPT 1.14±0.03 [.045±.001] SQUARE
POST AND REMAIN LOCKED IN POSITION.
- 4. IDENTIFICATION NUMBER FOR LAST CIRCUIT MAY
NOT APPEAR ON ALL ASSEMBLIES.
- 5. DIMENSIONS IN BRACKETS ARE IN INCHES.
- 6. HOUSING FEATURES ARE: FEED-THRU WITH LOCKING
RAMP.
- 7. OBSOLETE PARTS: OBSOLETE CIS STREAMLINING PER D.RENAUD/D.SINISI

95.10	[3.744]	24	5-641229-4
91.14	[3.588]	23	5-641229-3
87.17	[3.432]	22	5-641229-2
83.21	[3.276]	21	5-641229-1
79.25	[3.120]	20	5-641229-0
75.29	[2.964]	19	4-641229-9
71.32	[2.808]	18	4-641229-8
67.36	[2.652]	17	4-641229-7
63.40	[2.496]	16	4-641229-6
59.44	[2.340]	15	4-641229-5
55.47	[2.184]	14	4-641229-4
51.51	[2.028]	13	4-641229-3
47.55	[1.872]	12	4-641229-2
43.59	[1.716]	11	4-641229-1
39.62	[1.560]	10	4-641229-0
35.66	[1.404]	9	3-641229-9
31.70	[1.248]	8	3-641229-8
27.74	[1.092]	7	3-641229-7
23.77	[.936]	6	3-641229-6
19.81	[.780]	5	3-641229-5
15.85	[.624]	4	3-641229-4
11.89	[.468]	3	3-641229-3
7.92	[.312]	2	3-641229-2
95.10	[3.744]	24	2-641229-4
91.14	[3.588]	23	2-641229-3
87.17	[3.432]	22	2-641229-2
83.21	[3.276]	21	2-641229-1
79.25	[3.120]	20	2-641229-0
75.29	[2.964]	19	1-641229-9
71.32	[2.808]	18	1-641229-8
67.36	[2.652]	17	1-641229-7
63.40	[2.496]	16	1-641229-6
59.44	[2.340]	15	1-641229-5
55.47	[2.184]	14	1-641229-4
51.51	[2.028]	13	1-641229-3
47.55	[1.872]	12	1-641229-2
43.59	[1.716]	11	1-641229-1
39.62	[1.560]	10	1-641229-0
35.66	[1.404]	9	641229-9
31.70	[1.248]	8	641229-8
27.74	[1.092]	7	641229-7
23.77	[.936]	6	641229-6
19.81	[.780]	5	641229-5
15.85	[.624]	4	641229-4
11.89	[.468]	3	641229-3
7.92	[.312]	2	641229-2

7 SUPERCEDED

7 SUPERCEDED



THIS DRAWING IS A CONTROLLED DOCUMENT.

DIMENSIONS: mm [INCHES]	TOLERANCES UNLESS OTHERWISE SPECIFIED: 0 PLG ± .005 1 PLG ± .005 2 PLG ± .005 3 PLG ± .013 [0.005] 4 PLG ± .005 ANGLES ± .5° or 30'	DRN: J. HUFFMAN 08 MAR 95 CHK: SWING 08 MAR 95 APPD: D. CLARK 08 MAR 95 PRODUCT SPEC: 108-1051 APPLICATION SPEC: 114-1020 WEIGHT: -	DATE: 03AUG11 BY: HMR APPD: SM	TE Connectivity MTA-156 CONNECTOR ASSEMBLY, 22 AWG, STANDARD	RESTRICTED TO: -
MATERIAL: A	FINISH: A	CUSTOMER DRAWING	SCALE: 4:1 SHEET: 1 of 1 REV: S1	TE Connectivity	